

# finishing components

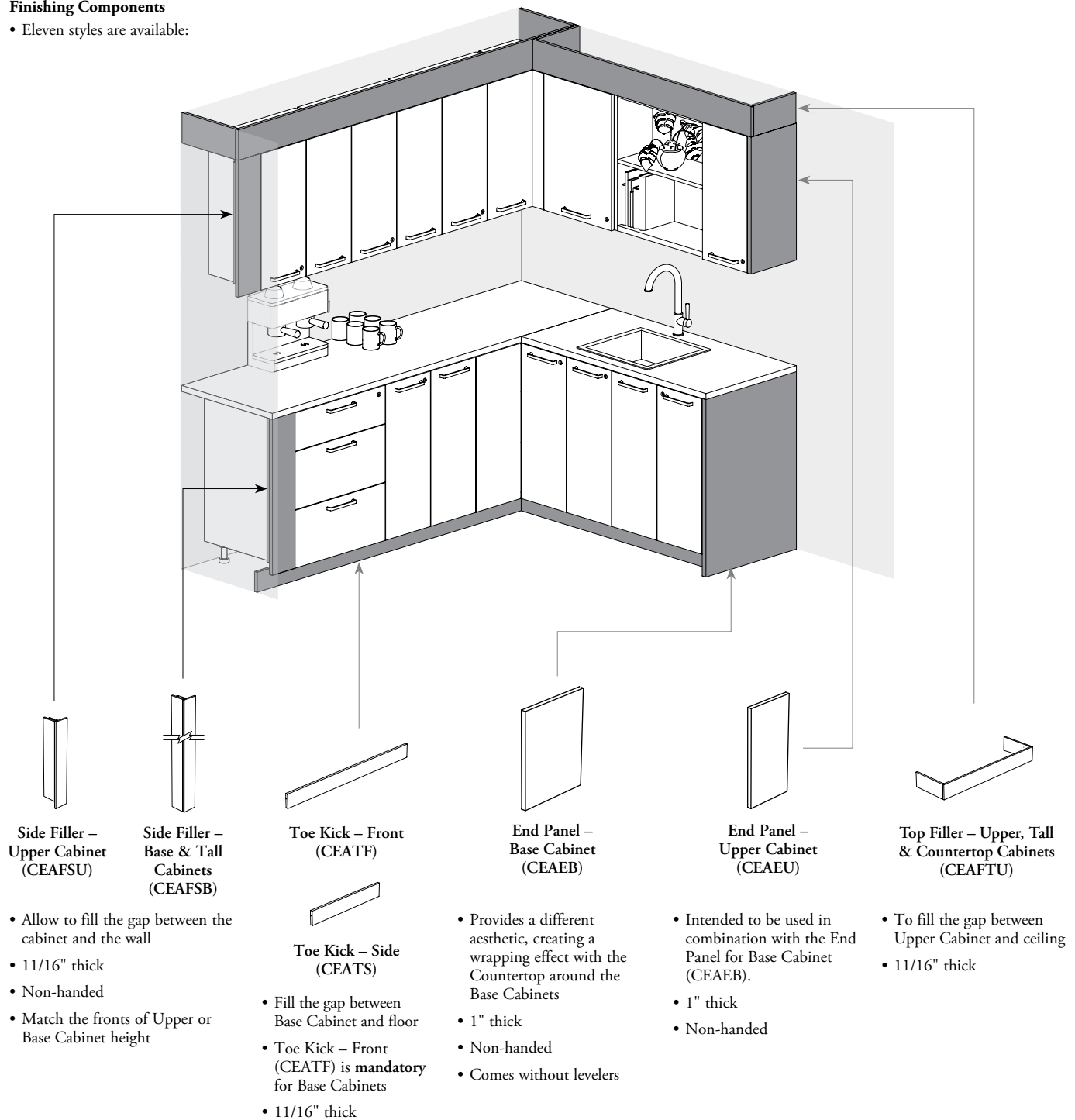
UNDERSTANDING FINISHING COMPONENTS . . . . .	90
FINISHING COMPONENTS BASICS . . . . .	93
PLANNING WITH FINISHING COMPONENTS	
SEAMS ALIGNMENT WITH TOP FILLERS & FRONT TOE KICKS . . . . .	96
PLANNING WITH TOE KICKS . . . . .	97
TOP & SIDE FILLER CONFIGURATIONS . . . . .	101
PLANNING WITH TOP FILLERS . . . . .	101
PLANNING WITH SIDE FILLERS . . . . .	103
PLANNING WITH END PANELS . . . . .	105

## understanding finishing components

Expansion Casework+ Finishing Components are designed to fill gaps between cabinets and wall for enhanced fit and finish.

### Finishing Components

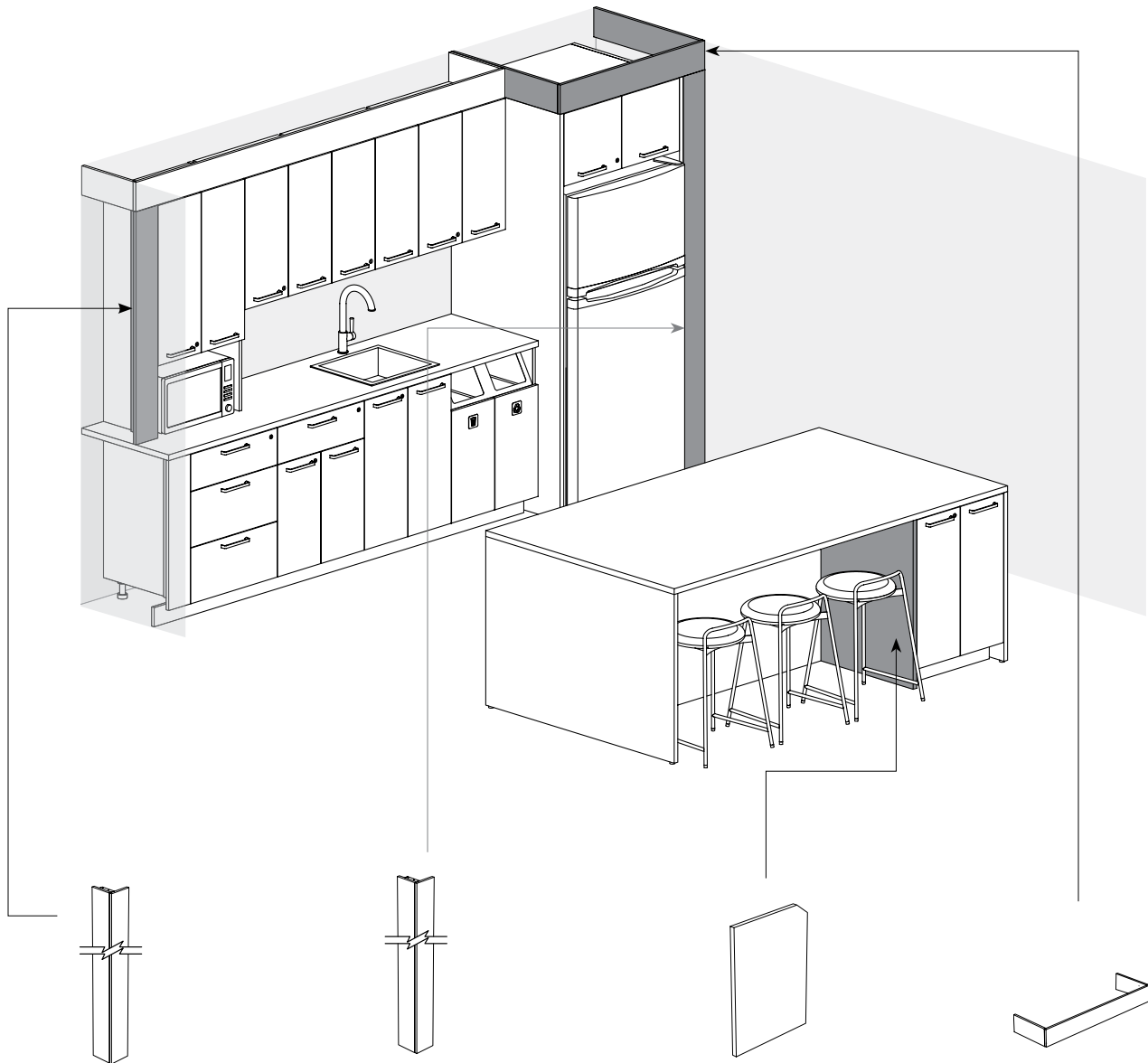
- Eleven styles are available:



For Finishes; see page 93

For Grain Direction; see page 132

# understanding finishing components (continued)



Side Filler –  
Countertop Cabinet  
(CEAFSC)

- Allows to fill the gap between Countertop Cabinet (CECM) and wall
- 11/16" thick
- Non-handed

Side Filler –  
Cabinet Kit for Appliance  
(CEAFSK)

- Allows to fill the gap between Cabinet Kit for Appliance(s) (CEKO and CEKT) and wall
- 11/16" thick
- Non-handed

End Panel –  
Under Island Base  
Cabinet  
(CEAIP)

- This end panel is **mandatory** when the side of a Base Cabinet is visible in the open section of an island
- 1" thick
- Non-handed
- Comes without levelers

Top Filler –  
Cabinet Kit for Appliance  
(CEAFTK)

- Allows to fill the gap between Cabinet Kit for Appliance(s) (CEKO and CEKT) and ceiling
- 11/16" thick

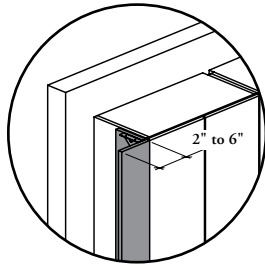
# understanding finishing components (continued)

Following steps should be followed when planning with Fillers (top & sides) Finishing Components.

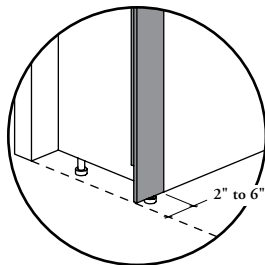
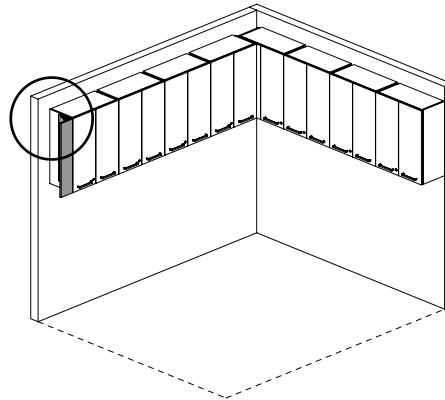
## how to plan

Gap between 2" to 6" should be left to add a Side Filler

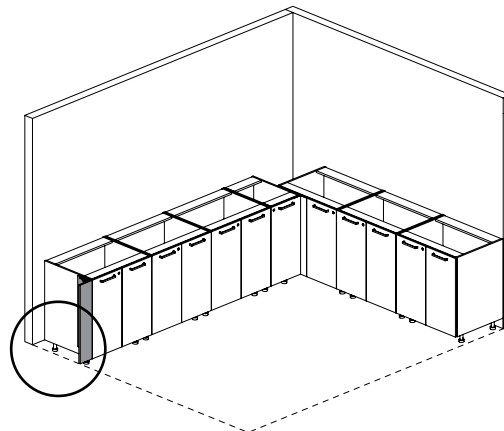
Exact dimension to be cut on-site for perfect adjustment with wall



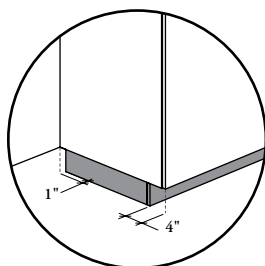
Fill the gap with a Side Filler at the end of run of the upper cabinets



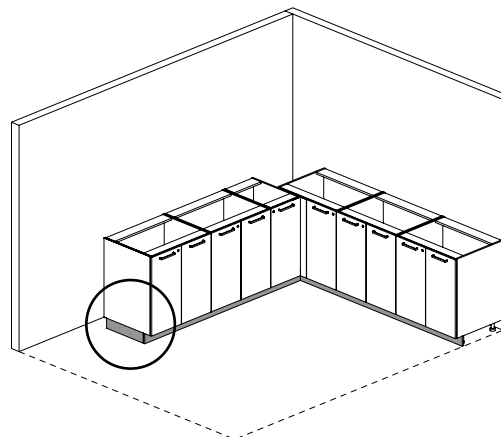
Fill the gap with a Side Filler at the end of run of the base cabinets or storage cabinets



Toe Kicks feature a 4" front recess and 1" side recess

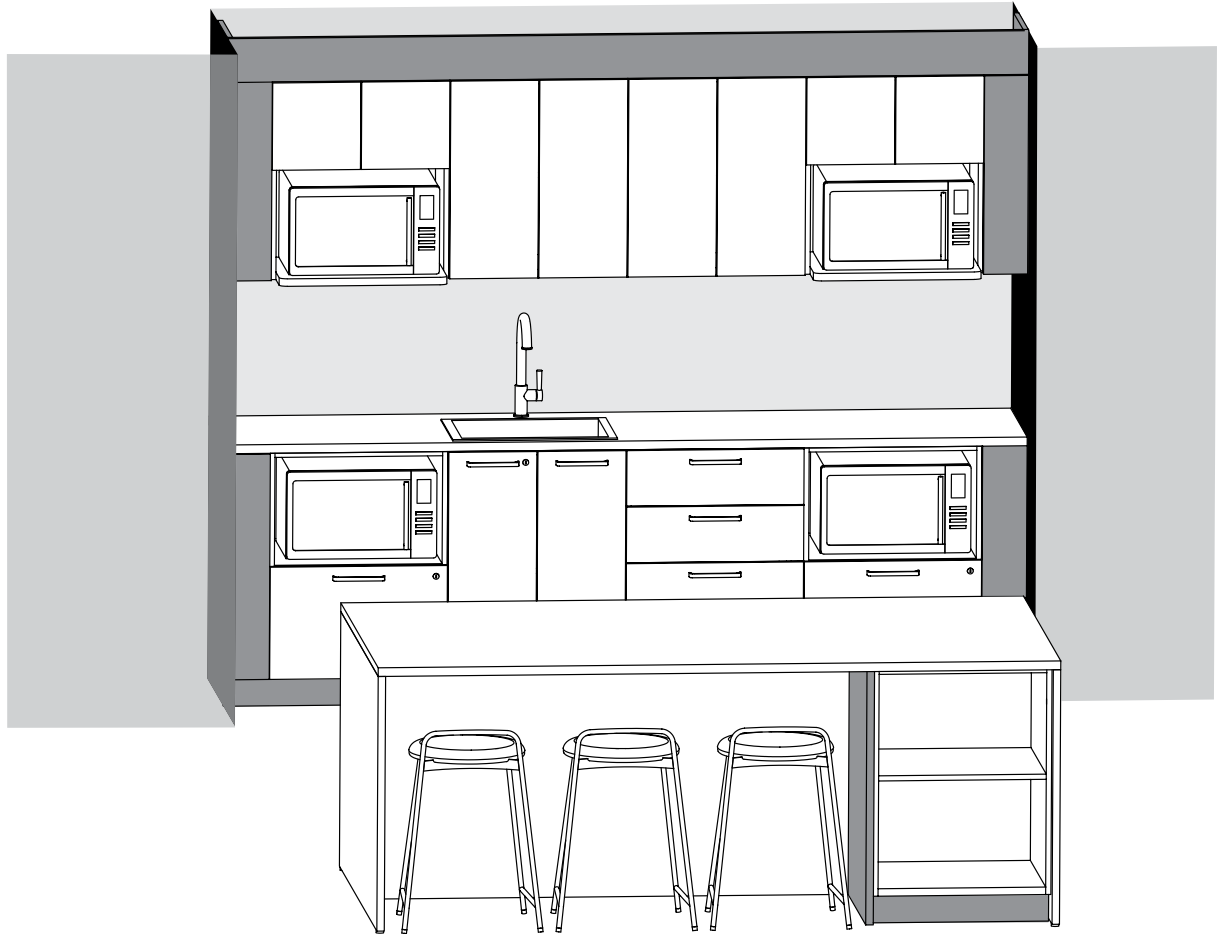


Will be recessed at the front and, if applicable, at the sides of the base cabinets or storage cabinets to provide foot space





# finishing components basics



## Finishes

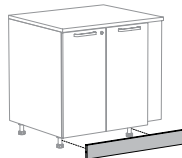
- **Front Toe Kicks or Fillers:** Source Laminate, Foundation Laminate, Grade 2 Laminate or Flintwood (No Cathedral)\*
  - **Side Top Fillers:** Source Laminate or Flintwood (No Cathedral)\*
  - **Edge Trim:** Edge Trim Colors and Not Applicable\*\*
  - **End Panel:** Source Laminate, Grade 2 Laminate\*\*\* or Flintwood (No Cathedral)\*
- \* Restrictions apply with this finish, refer to individual product pages for details  
 \*\* Not Applicable (NA) option is only available when Flintwood Front Finishes are specified  
 \*\*\* When Grade 2 Laminate is specified, the Accent colors are **not** included

## Finish Restrictions

Not all finishes are applicable with the Finishing Components, refer to individual product pages for more details

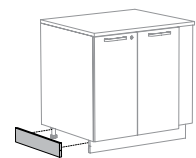
### Toe Kick – Front (CEATF)

- Cabinet Toe Kick Height: 4"
- Toe Kick Height Configurations:
  - Pre-Cut (P)
  - Cut On-Site Oversized (X)
- Widths: 11" to 107" (1" increments)



### Toe Kick – Side (CEATS)

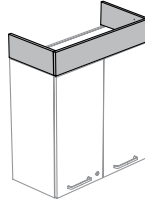
- Cabinet Toe Kick Height: 4"
- Toe Kick Height Configurations:
  - Pre-Cut (P)
  - Cut On-Site Oversized (X)
- Cabinet Depths: 24" and 29"



## finishing components basics (continued)

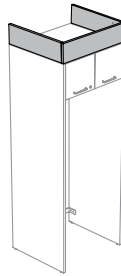
### Top Filler – Upper, Tall & Countertop Cabinets (CEAFTU)

- Filler Configurations:
  - Flush Front (F)
  - Flush Case (C)
- Depths: 12", 15", 20", 24" and 29"
- Widths: 12" to 107" (1" increments)
- Height: 6"



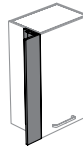
### Top Filler – Cabinet Kit for Appliance (CEAFTK)

- Filler Configuration: Flush Front (F)
- Depths: 24", 25", 29" and 30"
- Widths: 28" to 72" (2" increments)
- Height: 6"



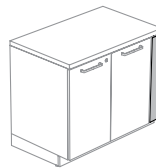
### Side Filler – Upper Cabinet (CEAFSU)

- Width: 6"
- Heights: 15", 24" to 51" (3" increments)
- Can be installed to either match the case or the front of cabinet



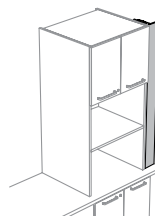
### Side Filler – Base and Tall Cabinets (CEAFSB)

- Width: 6"
- Heights: 32", 35", 72" to 96" (6" increments)
- Can be installed to either match the case or the front of cabinet



### Side Filler – Countertop Cabinet (CEAFSC)

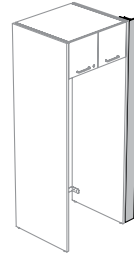
- Width: 6"
- Datum Heights: 84", 90" and 96"
- Base Cabinet Heights: 32" and 35"
- Countertop Thickness: 1 3/16" (M)
- Can be installed to either match the case or the front of cabinet



## finishing components basics (continued)

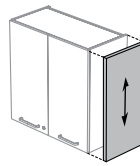
### Side Filler – Cabinet Kit for Appliance (CEAFSK)

- Width: 6"
- Datum Heights: 84", 90" and 96"
- Can be installed to either match the case or the front of cabinet



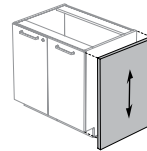
### End Panel – Upper Cabinet (CEAEU)

- Depths: 12" and 15"
- Widths: 15", 24" to 51" (3" increments)



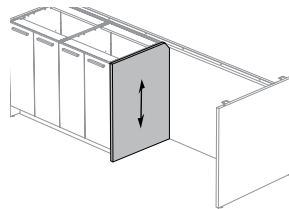
### End Panel – Base Cabinet (CEAEB)

- Depths: 24", 25", 29" and 30"
- Heights: 32" and 35"



### End Panel – Under Island Base Cabinet (CEAIP)

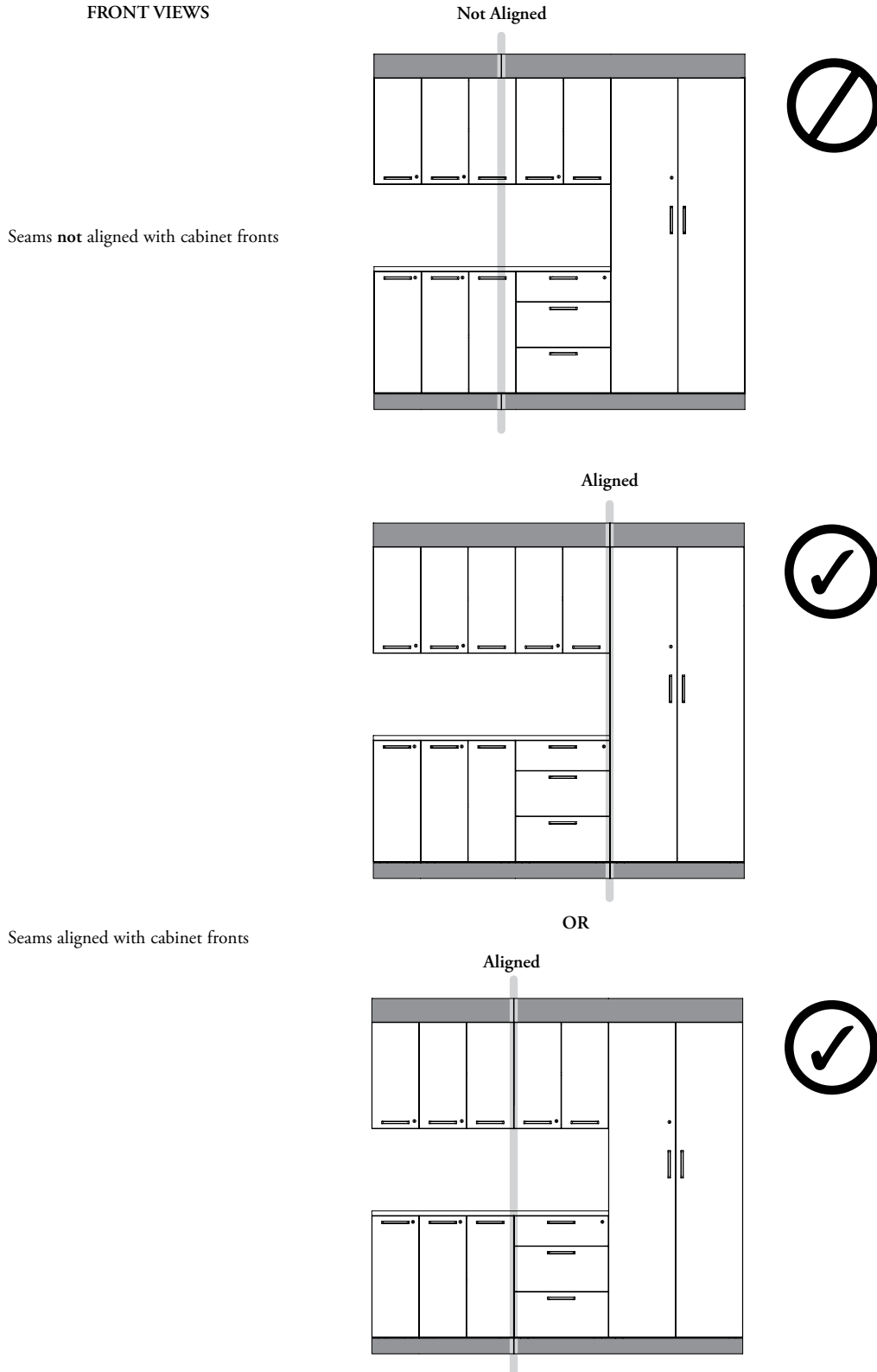
- Storage Depth: 24"
- Storage Configurations:
  - Flush Front (F)
  - Recessed Front (R)
- Heights: 32" and 35"



# planning with finishing components

## seams alignment with top fillers & front toe kick

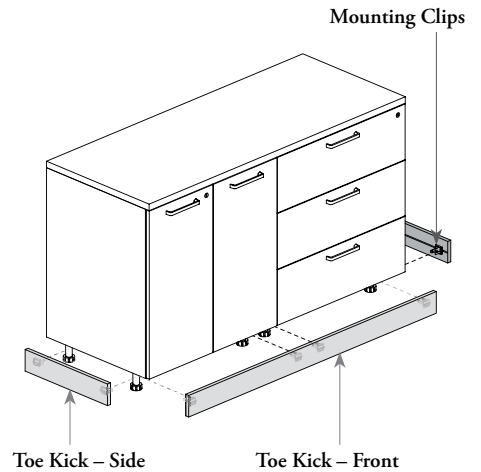
When multiple Top Fillers or/and Toe Kicks are needed, it is recommended to align the seam with the cabinet fronts



# planning with finishing components (continued)

## planning with toe kicks

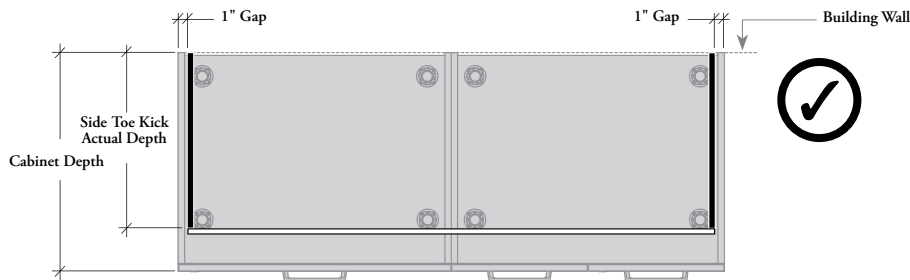
- Two styles are available: Toe Kick – Front (CEATF) and Toe Kick – Side (CEATS)
- Can overlap multiple Base and/or Storage Cabinets of the same depth
- Mounting Clips are included with all Base Cabinets, Tall Storage and Toe Kick – Side
- Compatible with all Base Cabinets and all Storage Cabinets except for:
  - Base Cabinet for Sink – People with Reduced Mobility (CEBKRS and CEBKRO)
  - Countertop Cabinet – Microwave Section(s) and Doors (CECM)
  - Recycling/Disposal Units (CESRUS and CESRUX)
- Two Height Configurations are available:
  - **Pre-Cut (P):** Comes with trim on all sides and pre-sized for easy installation, eliminating the need for on-site cutting
  - **Cut On-Site Oversized (X):** Supplied with an oversized height and trim on three sides, allowing it to be cut after the base cabinets are installed and leveled, ensuring a gap-free, perfect fit



## toe kick – side depth specification

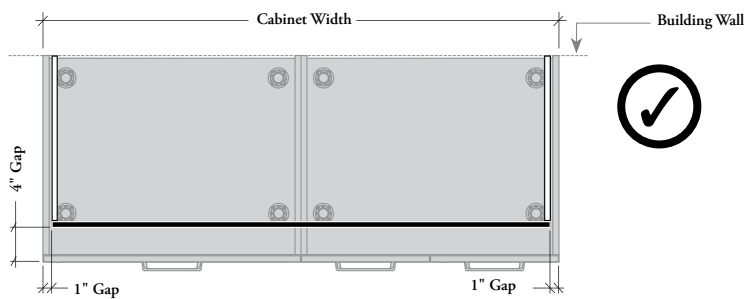
- Depth specification must match cabinet depth
- Must be specified everytime the side of a Base or Tall Cabinet is exposed

### BOTTOM VIEW



## toe kick – front width specifications

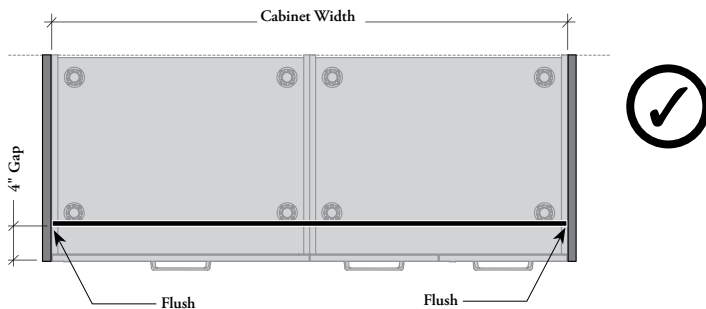
### Side of a cabinet is exposed



### BOTTOM VIEWS

Each time the side of a cabinet is exposed, 1" should be removed from the Toe Kick width

### With End Panel



When the Toe Kick runs into a End Panel, the width should be specified flush

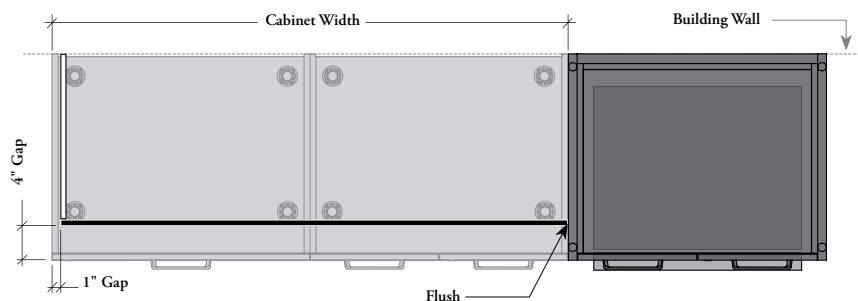
# planning with finishing components (continued)

## planning with toe kicks (continued)

### toe kick – front width specifications (continued)

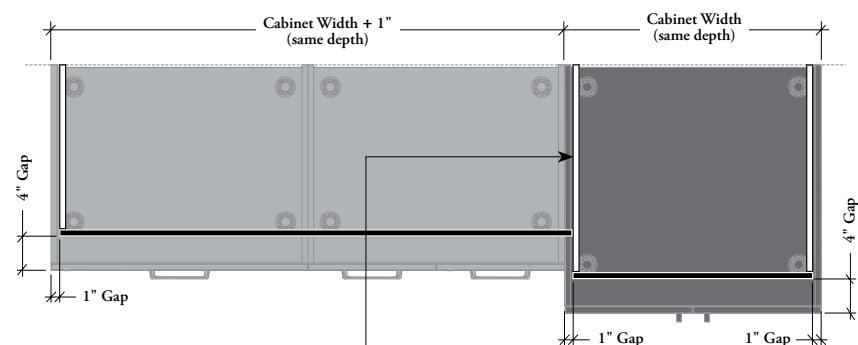
With Cabinet Kit for Appliance(s)

BOTTOM VIEWS



When the Toe Kick runs into a Cabinet Kit, the width should be specified flush

With Deeper Tall Cabinet

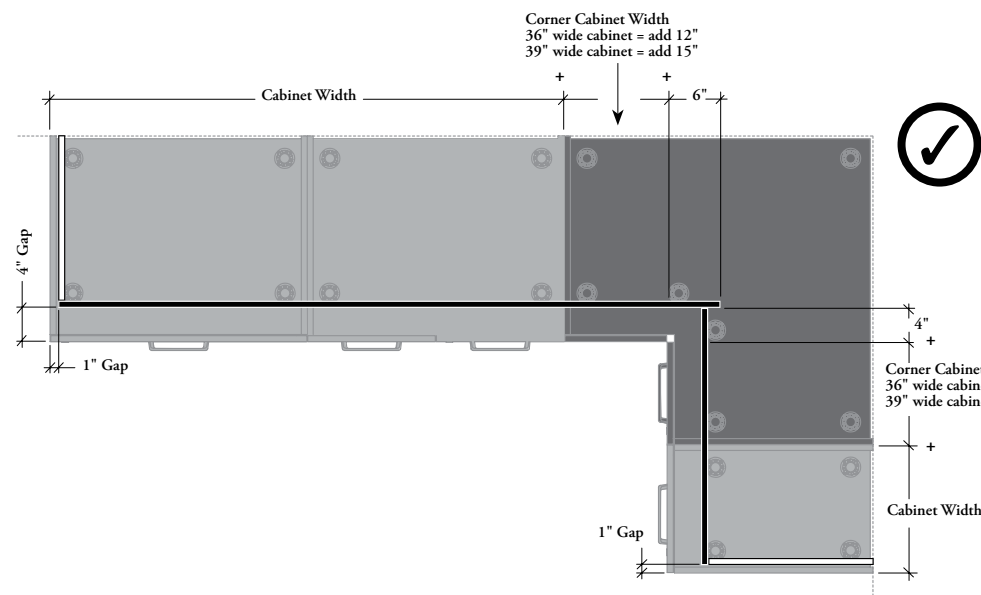


! Side Toe Kick is mandatory when a change in depth occurs



When the Toe Kick runs into a deeper Tall Cabinet, the width should be specified plus 1"

With Base Cabinet for Standard Corner



When used with Base Cabinet for Standard Corner – Door (CEBCAS) the width of one front Toe Kick should be specified plus 4", the other one plus 6"

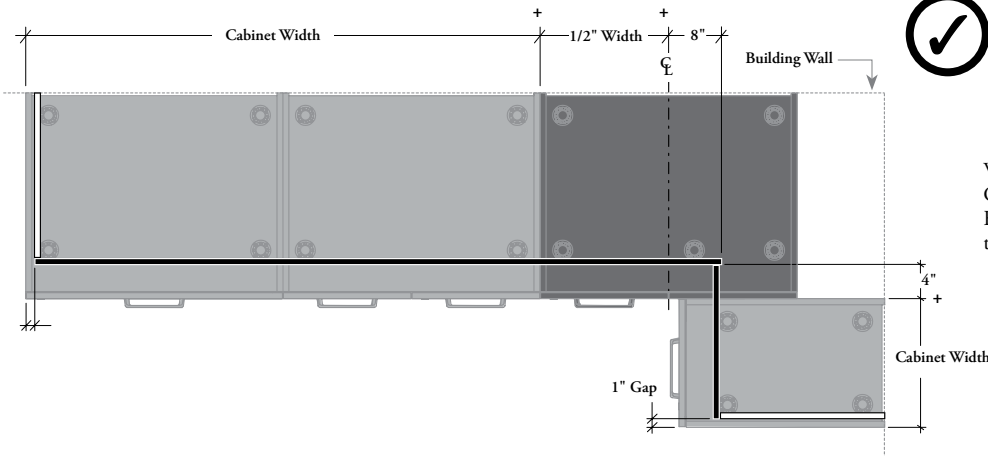
# planning with finishing components (continued)

## planning with toe kicks (continued)

### toe kick – front width specifications (continued)

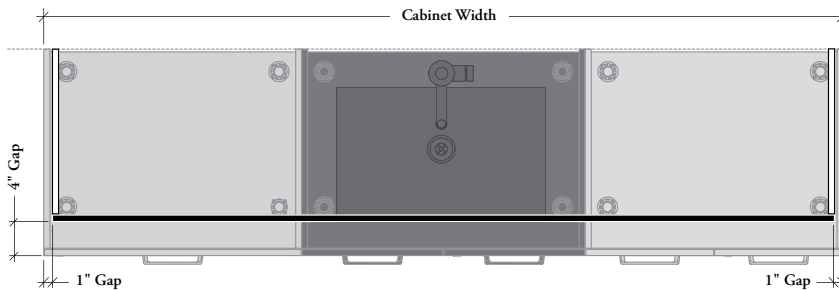
#### BOTTOM VIEWS

##### With Base Cabinet for Blind Corner



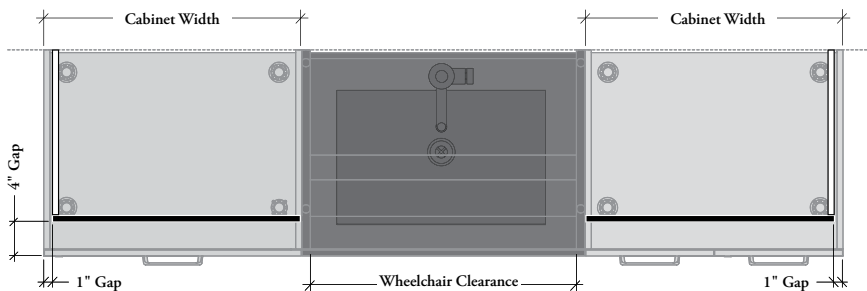
When used with Base Cabinet for Blind Corner – Door (CEBCBS), the width of one Front Toe Kick should be specified plus 4", the other plus 8"

##### With Base Cabinet for Sink – Standard



A Front Toe Kick is required in front of Base Cabinet for Sink – Doors (CEBKs) or Base Cabinet for Sink – Doors and False Front (CEBKFS)

##### With Base Cabinets for Sink – People with Reduced Mobility



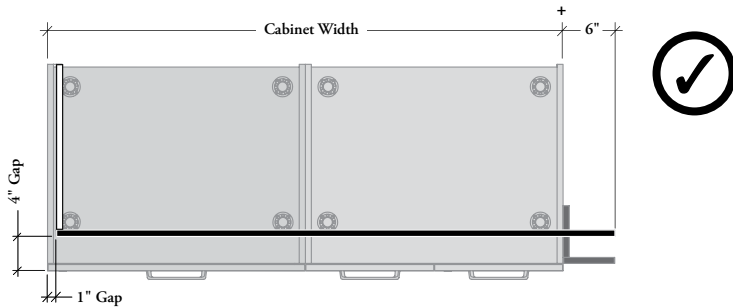
- A Front Toe Kick **cannot** be used with Base Cabinet for Sink – People with Reduced Mobility – Doors (CEBKRS) or Base Cabinet for Sink – People with Reduced Mobility – Open (CEBKRO)
- Front Toe Kick of surrounding base cabinets should be specified flush

# planning with finishing components (continued)

## planning with toe kicks (continued)

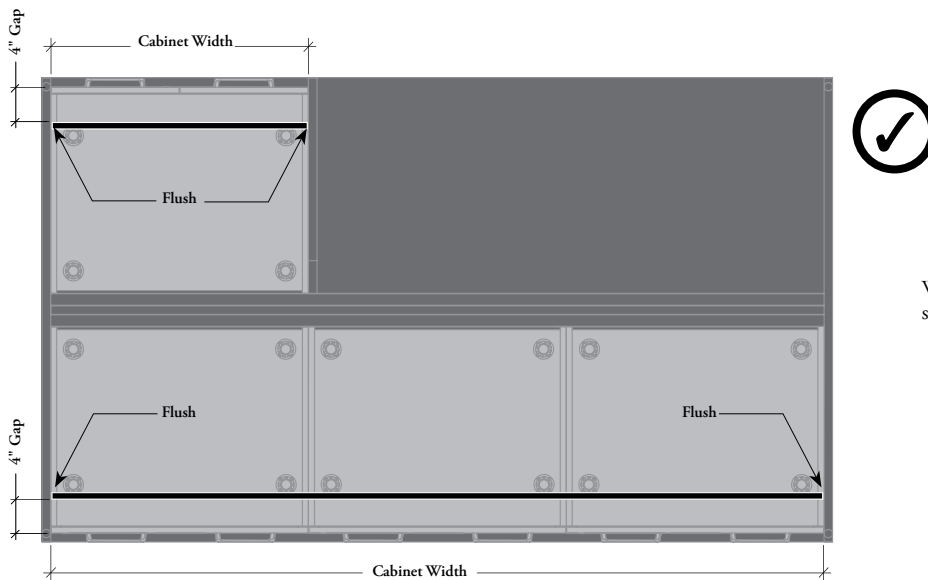
### toe kick – front width specifications (continued)

#### With Side Filler



When the Toe Kick runs into a Side Filler, the width should be specified plus 6"

#### With Island Application



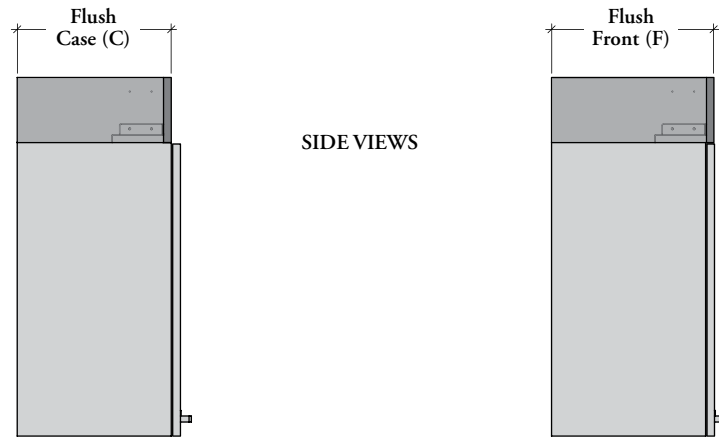
When used in Island, Front Toe Kick is always specified flush



# planning with finishing components (continued)

## top & side filler configurations

Two filler configurations are available:

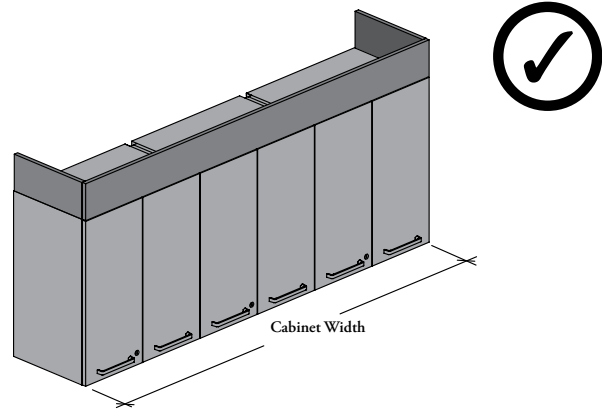


The Top Filler – Upper, Tall & Countertop Cabinets (CEAFTU) or all Side Fillers can be install to match the front of cabinet case

All Top or Side Fillers can be install to match the cabinet fronts

## planning with top fillers

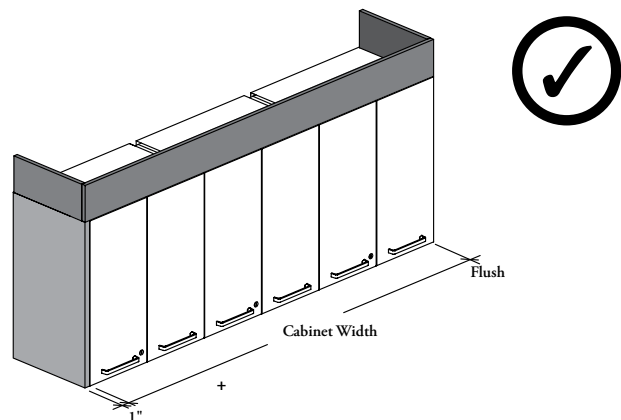
- If applicable, all Top Fillers should extend over Side Filler
- Top Filler Depth must match the cabinet depth



- Can overlap multiple Upper Cabinets of the same depth

### Top Filler – Upper, Tall & Countertop Cabinets (CEAFTU)

- Compatible with:
  - All Upper Cabinets
  - All Tall Cabinets
  - Countertop Cabinet – Microwave Section(s) and Doors (CECM)



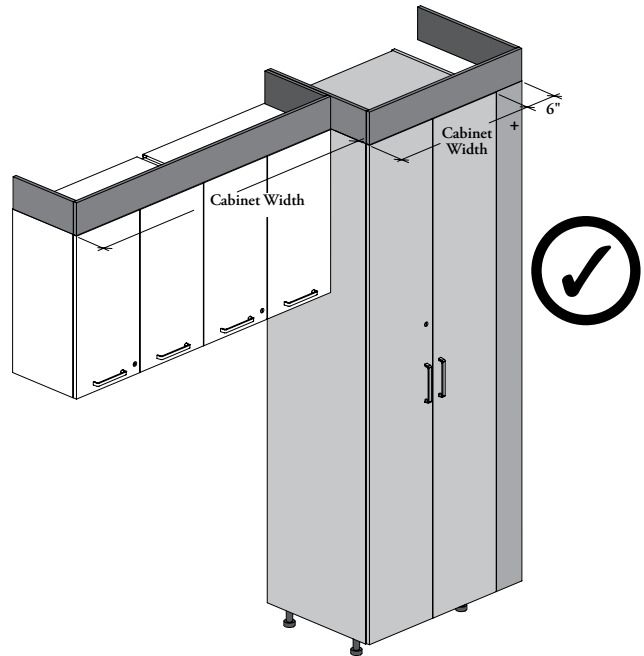
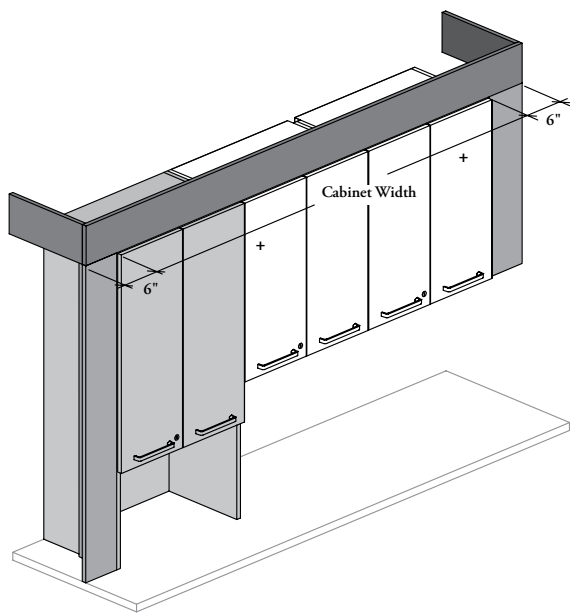
- Must be specified 1" wider when a End Panel – Upper Cabinet (CEAEU) is specified

# planning with finishing components (continued)

## planning with top fillers (continued)

### Top Filler – Upper, Tall & Countertop Cabinets (CEAFTU) (Continued)

- Can overlap multiple Upper, Storage Cabinets, End Panel or Side Fillers

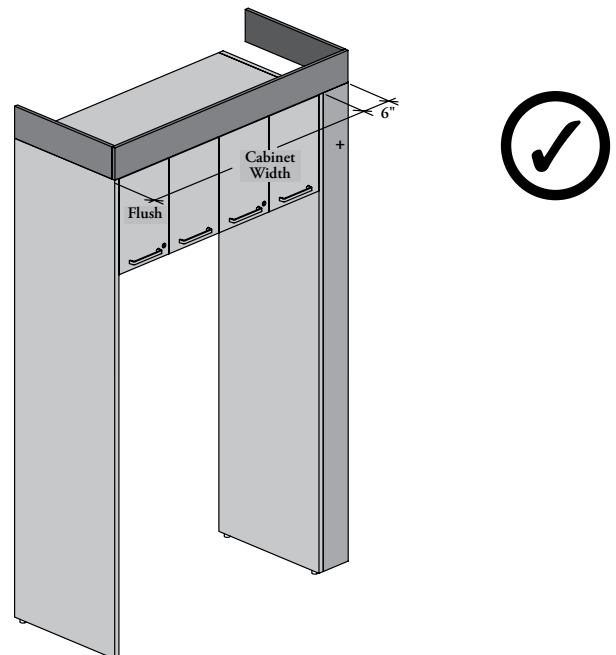


- When top filler overlaps multiple Upper or Storage Cabinets of the same depth plus a Side Filler (CEAFSU or CEAFSC), the Top Filler must be specified 6" wider

- When there is a change in depth between Upper Cabinets or Tall Cabinets, Top Filler must end and be specified flush

### Top Filler – Cabinet Kit for Appliance (CEAFTK)

- Compatible with Cabinet Kit for Appliances (CEKO and CEKT)
- **Cannot** overlap multiple Cabinet Kit for Appliance(s)
- To be specified same depth as Cabinet Kit



- This Top Filler must be specified 6" wider when a Side Filler – Cabinet Kit for Appliance (CEAFSK) is specified

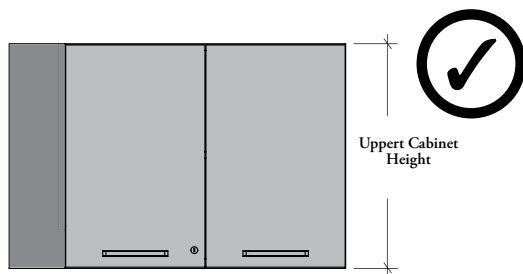
# planning with finishing components (continued)

## planning with side fillers

Width and height Side Fillers to be cut on-site for perfect adjustment

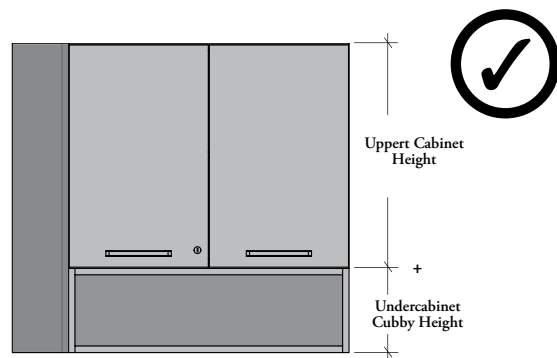
Side Filler – Upper Cabinet (CEAFSU) and Side Filler – Base & Tall Cabinets (CEAFSB)

- Width to be cut on-site for perfect adjustment, front comes at 6" wide when shipped
- Once cut, a minimum of 2" visible front panel is required

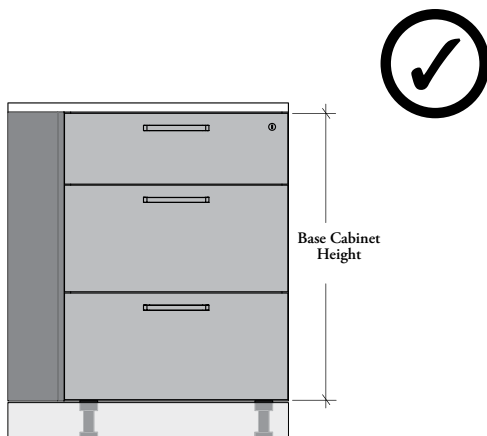


Side Filler – Upper Cabinet (CEAFSU)

- Match the Height of the Upper Cabinet
- Compatible with all Uppert Cabinets

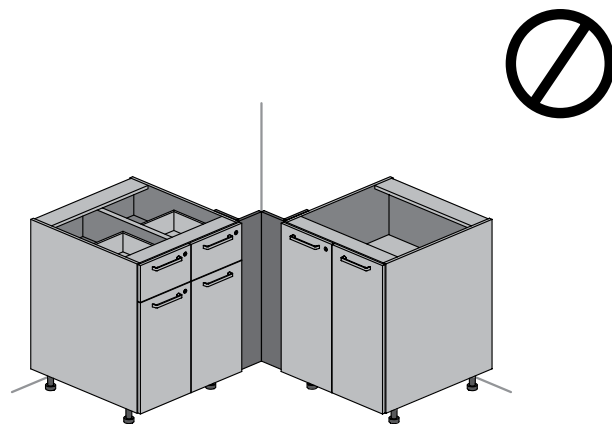


- When used with a Upper Cabinet and a Undercabinet Cubby (CEAUC), the height of the cubby should be considered



Side Filler – Base & Tall Cabinets (CEAFSB)

- Match the height of the Base Cabinet or Tall Cabinet Case
- **Does not** cover the Toe Kick section
- Compatible with all Base and Tall Cabinets except Base Cabinet for Sink – People with Reduced Mobility (CEBKRS or CEBKRO)



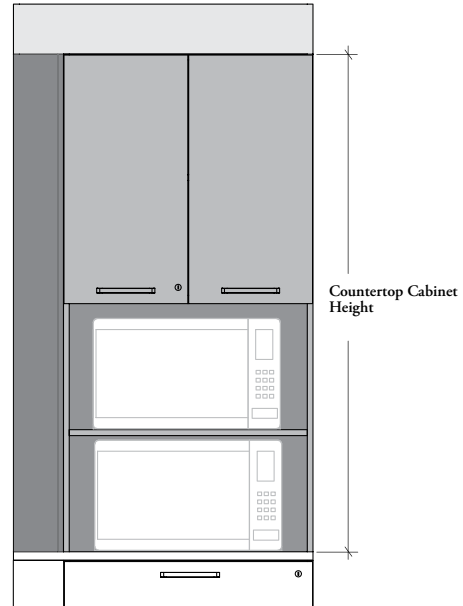
- **Cannot** be used in corner application

# planning with finishing components (continued)

## planning with side fillers (continued)

### Side Filler – Countertop Cabinet (CEAFSC)

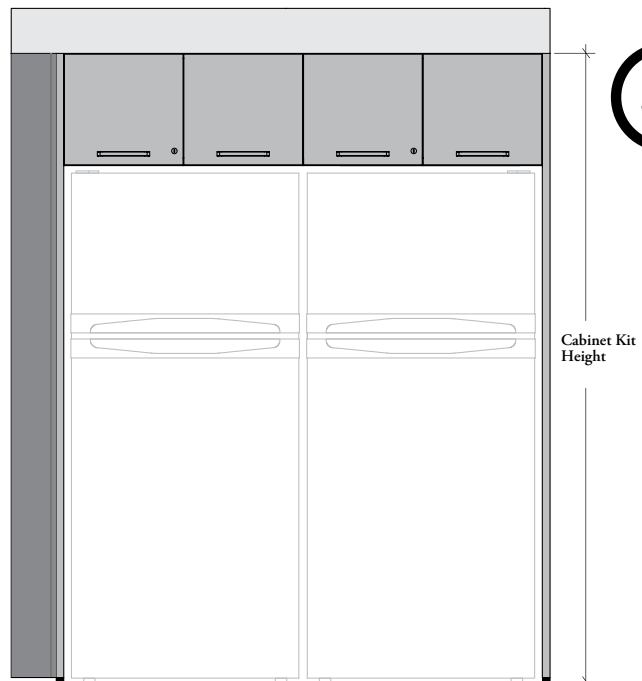
- Width to be cut on-site for perfect adjustment, front comes at 6" wide when shipped
- Only compatible with Countertop Cabinet – Microwave Section(s) and Doors (CECM)



- This Side Filler must match the height of the Countertop Cabinet

### Side Filler – Cabinet Kit for Appliance (CEAFSK)

- Width and height to be cut on-site for perfect adjustment, front comes at 6" wide and +2" height (to compensate for leveling) when shipped
- Compatible with Cabinet Kit for Appliance(s) (CEKO and CEKT)



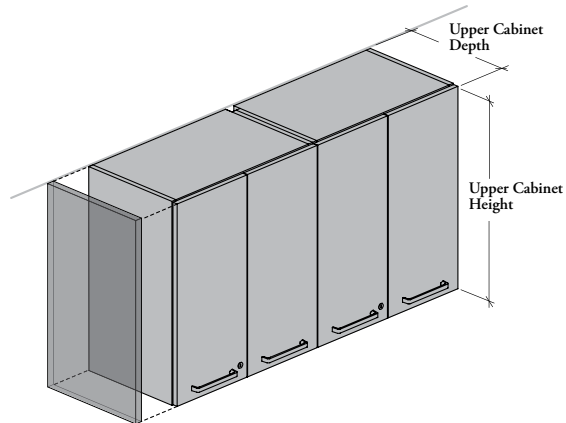
- This Side Filler must match the height of the Cabinet Kit for Appliance(s)

# planning with finishing components (continued)

## planning with end panels

### End Panel – Upper Cabinet (CEAEU)

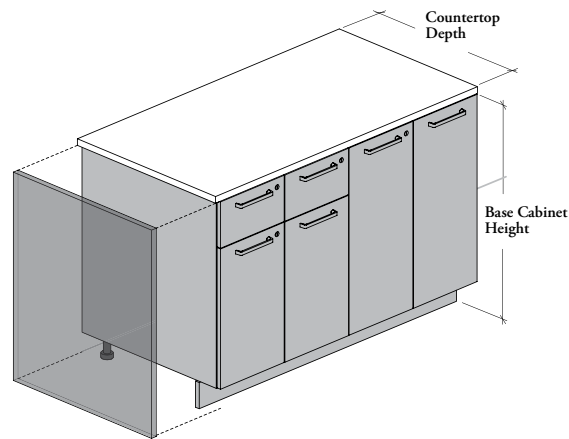
- Not mandatory when cabinet is specified with integrated end panel
- Compatible with all Upper Cabinets



- Height to match Upper Cabinet
- Depth match depth of Upper Cabinet including fronts

### End Panel – Base Cabinet (CEAEB)

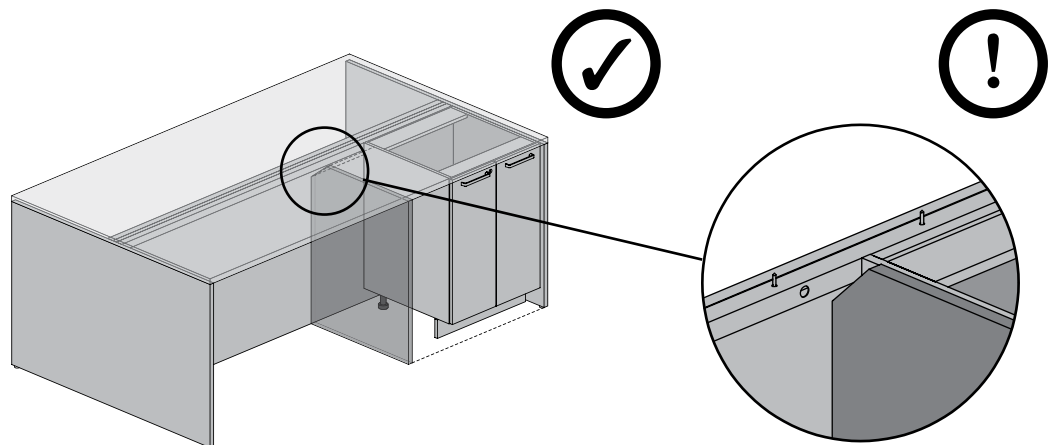
- This End Panel is finishing component and **does not** provide any support to Countertop
- Compatible with all Base Cabinets except for Cabinet for Sink – People Reduced Mobility (CEBKRS and CEBKRO)
- **Cannot** be used under an Island Structure



- Should be specified the same depth as the Countertop
- Height to match Base Cabinet datum including Toe Kick section

### End Panel – Under Island Base Cabinet (CEAIP)

- End Panel a finishing component for Base Cabinet located under an Island Structure with Gables (CEWIGO and CEWIGB)
- **Does not** provide any support



- **Mandatory** when the side of a Base Cabinet is visible in the open section of an island
- The storage configuration of the End Panel must match the storage configuration of the Island Structure (CEWIGO or CEWIGB)
- The front edge of the end panel will be flush with the edge of the Island Countertop (CEWIC)

- This End Panel has a dedicated cut-out to fit island applications, it **cannot** be used anywhere else