

upper cabinets

Xpress

CEUS

Upper Cabinet – Door(s)

WHAT'S INCLUDED

1 upper cabinet, pull(s) (as specified), mounting hardware, locks and keys (as specified) and shelf(ves) per compartment listed below:

Adjustable Shelf(ves)	12" to 36" w	42" w 1 Vertical Divider
15" h	n/a	n/a
24" or 30" h (Shown)	1	1
33" to 42" h	2	2

WHAT'S EXCLUDED

Wall-Mounted Rail for Upper Cabinet (CEUR) and Recessed LED Light (CEALD).

NOTES

Light Management with Groove Connection – None (X) is **not** available when 12" to 21" width cabinet is specified.

Light Management with Groove Connection – Left (L) or – Right (R) are **not** available when 12" or 15" width with 15" height is specified.

An Integrated End Panel **cannot** be specified on the same side as a groove connection in the Light Management options.

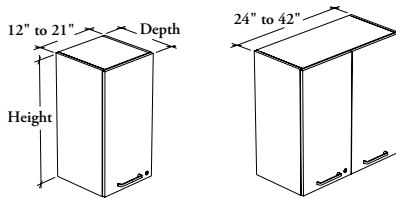
When Flintwood Front Finish is specified, only Not Applicable (NA) Edge Trim Finish is available.

When Stainless (8), Finger Pull (X) or Drilled On-Site – No Pull (Z) Pull Style is specified, Pull Finish is **not** available.

When a shelf is included, holes at 1 1/4" intervals allow for shelf adjustment.

Additional Shelves for Cabinet (CEACS) are available for 24" to 42" height cabinets and must be specified separately.

Xpress See *Xpress Program* and/or specification software for finishes availability.



PRODUCT OPTIONS

Depth	Width	Height	Light Management	Integrated End Panel	Door Swing Direction	Hinge Style
12, 15	12, 15, 18, 21, 24, 27, 30, 33, 36, 39, 42	15, 24, 27, 30, 33, 36, 42	B Groove Connection – Both Sides L Groove Connection – Left R Groove Connection – Right X Groove Connection – None N No Light Management	B End Panel – Both Sides (Shown) L End Panel – Left R End Panel – Right N End Panel – None	L Door Swing – Left (Shown) R Door Swing – Right N Not Applicable (Shown)	S Standard – Soft Close

SAMPLE ORDER CODE

CEUS 15	24	30	N	L	N	S
----------------	-----------	-----------	----------	----------	----------	----------

PRODUCT OPTIONS CONTINUED

Front Finish	Edge Trim Finish	Case Finish	Pull Style		Pull Finish (If Applicable)	Key Style
Source Laminate	Edge Trim Colors	Source Laminate	1 Standard Expansion	M Modern Straight (ADA)	Foundation	K Keyed Alike
Foundation Laminate	NA Not Applicable	Flintwood (No Cathedral)	8 Stainless (ADA)	S Slim (Shown)	Accent	R Keyed Randomly
Grade 2 Laminate			9 Rectangular	X Finger Pull	Mica	N No Lock
Flintwood (No Cathedral)			E Edge – Standard	Z Drilled On-Site – No Pull		
			F Edge – Small			

SAMPLE ORDER CODE CONTINUED

3G	4G	3G	8		K
-----------	-----------	-----------	----------	--	----------

See Pricing on the following page.

CEUS
Upper Cabinet – Door(s)
(Continued)

DIMENSIONS
INCHES / MM

PRICING

DIMENSIONS			LEFT (L) OR RIGHT (R) DOOR SWING					
			SOURCE LAMINATE FRONT	FOUNDATION LAMINATE FRONT	GRADE 2 LAMINATE FRONT	FLINTWOOD FRONT		
CASE FINISH								
D	W	H	Source Laminate	Source Laminate	Source Laminate	Flintwood		
						Source Laminate	Flintwood	
12 / 305	12 / 305	15 / 381	537	571	631	1538	624	1530
12 / 305	12 / 305	24 / 610	638	691	739	1902	731	1892
12 / 305	12 / 305	27 / 686	658	718	767	1961	759	1951
12 / 305	12 / 305	30 / 762	679	746	795	2021	787	2010
12 / 305	12 / 305	33 / 838	722	795	847	2080	838	2069
12 / 305	12 / 305	36 / 914	738	818	872	2141	863	2130
12 / 305	12 / 305	42 / 1067	782	875	933	2260	923	2248
12 / 305	15 / 381	15 / 381	569	611	668	1585	661	1577
12 / 305	15 / 381	24 / 610	678	745	790	1969	782	1959
12 / 305	15 / 381	27 / 686	700	775	824	2037	815	2026
12 / 305	15 / 381	30 / 762	722	805	857	2103	848	2092
12 / 305	15 / 381	33 / 838	771	862	918	2171	908	2160
12 / 305	15 / 381	36 / 914	787	887	946	2238	936	2226
12 / 305	15 / 381	42 / 1067	836	952	1018	2372	1007	2360
12 / 305	18 / 457	15 / 381	602	652	706	1634	699	1625
12 / 305	18 / 457	24 / 610	718	798	843	2038	834	2027
12 / 305	18 / 457	27 / 686	742	832	880	2111	871	2100
12 / 305	18 / 457	30 / 762	765	865	919	2186	909	2175
12 / 305	18 / 457	33 / 838	821	930	989	2262	979	2250
12 / 305	18 / 457	36 / 914	838	957	1021	2335	1010	2323
12 / 305	18 / 457	42 / 1067	891	1030	1102	2484	1091	2471
12 / 305	21 / 533	15 / 381	634	692	744	1682	736	1673
12 / 305	21 / 533	24 / 610	758	851	894	2105	885	2094
12 / 305	21 / 533	27 / 686	784	889	939	2187	929	2176
12 / 305	21 / 533	30 / 762	809	925	981	2269	971	2257
12 / 305	21 / 533	33 / 838	870	998	1059	2351	1048	2339
12 / 305	21 / 533	36 / 914	888	1027	1095	2434	1084	2421
12 / 305	21 / 533	42 / 1067	946	1108	1188	2596	1176	2583
15 / 381	12 / 305	15 / 381	558	592	652	1578	645	1570
15 / 381	12 / 305	24 / 610	668	721	769	1974	761	1964
15 / 381	12 / 305	27 / 686	695	755	804	2038	796	2027
15 / 381	12 / 305	30 / 762	722	789	839	2101	830	2090
15 / 381	12 / 305	33 / 838	774	847	899	2164	890	2153
15 / 381	12 / 305	36 / 914	802	882	937	2228	927	2216
15 / 381	12 / 305	42 / 1067	853	946	1004	2354	994	2342
15 / 381	15 / 381	15 / 381	592	634	691	1631	684	1622
15 / 381	15 / 381	24 / 610	714	781	827	2044	818	2033
15 / 381	15 / 381	27 / 686	742	817	866	2116	857	2105
15 / 381	15 / 381	30 / 762	770	853	905	2188	896	2177
15 / 381	15 / 381	33 / 838	829	920	976	2260	966	2248
15 / 381	15 / 381	36 / 914	858	958	1018	2332	1007	2320
15 / 381	15 / 381	42 / 1067	912	1028	1094	2476	1083	2463

Pricing is continued on the following page.

upper cabinets

Xpress

CEUS

Upper Cabinet – Door(s) (Continued)

DIMENSIONS
INCHES / MM

PRICING

			LEFT (L) OR RIGHT (R) DOOR SWING					
			SOURCE LAMINATE FRONT	FOUNDATION LAMINATE FRONT	GRADE 2 LAMINATE FRONT		FLINTWOOD FRONT	
			CASE FINISH					
D	W	H	Source Laminate	Source Laminate	Source Laminate	Flintwood	Source Laminate	Flintwood
15 / 381	18 / 457	15 / 381	626	676	731	1683	723	1674
15 / 381	18 / 457	24 / 610	760	840	885	2113	876	2102
15 / 381	18 / 457	27 / 686	789	879	928	2193	918	2182
15 / 381	18 / 457	30 / 762	818	918	972	2274	962	2262
15 / 381	18 / 457	33 / 838	883	992	1052	2355	1041	2343
15 / 381	18 / 457	36 / 914	914	1033	1097	2436	1086	2423
15 / 381	18 / 457	42 / 1067	969	1108	1181	2596	1169	2583
15 / 381	21 / 533	15 / 381	660	718	770	1735	762	1726
15 / 381	21 / 533	24 / 610	806	899	943	2182	933	2171
15 / 381	21 / 533	27 / 686	836	941	991	2273	981	2261
15 / 381	21 / 533	30 / 762	866	982	1039	2361	1028	2349
15 / 381	21 / 533	33 / 838	937	1065	1127	2451	1115	2438
15 / 381	21 / 533	36 / 914	971	1110	1179	2540	1167	2527
15 / 381	21 / 533	42 / 1067	1027	1189	1270	2717	1257	2703
12 / 305	24 / 610	15 / 381	756	823	944	1989	934	1979
12 / 305	24 / 610	24 / 610	891	997	1110	2306	1099	2294
12 / 305	24 / 610	27 / 686	919	1038	1157	2417	1145	2404
12 / 305	24 / 610	30 / 762	948	1081	1202	2526	1190	2513
12 / 305	24 / 610	33 / 838	1014	1160	1285	2636	1272	2622
12 / 305	24 / 610	36 / 914	1034	1193	1323	2746	1309	2732
12 / 305	24 / 610	42 / 1067	1101	1286	1424	2965	1409	2950
12 / 305	27 / 686	15 / 381	781	856	977	2061	967	2050
12 / 305	27 / 686	24 / 610	927	1046	1160	2429	1148	2416
12 / 305	27 / 686	27 / 686	959	1093	1211	2546	1199	2533
12 / 305	27 / 686	30 / 762	992	1141	1264	2664	1251	2650
12 / 305	27 / 686	33 / 838	1064	1228	1357	2782	1343	2768
12 / 305	27 / 686	36 / 914	1088	1267	1400	2900	1386	2885
12 / 305	27 / 686	42 / 1067	1161	1370	1513	3135	1498	3119
12 / 305	30 / 762	15 / 381	807	890	1012	2134	1001	2123
12 / 305	30 / 762	24 / 610	962	1095	1206	2550	1194	2537
12 / 305	30 / 762	27 / 686	999	1148	1266	2677	1253	2663
12 / 305	30 / 762	30 / 762	1034	1200	1325	2802	1311	2788
12 / 305	30 / 762	33 / 838	1115	1297	1428	2928	1413	2913
12 / 305	30 / 762	36 / 914	1141	1340	1477	3054	1462	3038
12 / 305	30 / 762	42 / 1067	1222	1454	1604	3306	1588	3289
12 / 305	33 / 838	15 / 381	832	923	1045	2205	1034	2194
12 / 305	33 / 838	24 / 610	999	1145	1256	2672	1243	2658
12 / 305	33 / 838	27 / 686	1038	1202	1321	2805	1307	2791
12 / 305	33 / 838	30 / 762	1078	1260	1386	2940	1372	2925
12 / 305	33 / 838	33 / 838	1165	1365	1499	3074	1484	3058
12 / 305	33 / 838	36 / 914	1196	1414	1556	3208	1540	3192
12 / 305	33 / 838	42 / 1067	1284	1539	1695	3476	1678	3458

NOT APPLICABLE DOOR SWING (N)

Pricing is continued on the following page.

CEUS
Upper Cabinet – Door(s)
(Continued)

DIMENSIONS
INCHES / MM

PRICING

DIMENSIONS			PRICING					
INCHES / MM			NOT APPLICABLE DOOR SWING (N)					
			SOURCE LAMINATE FRONT	FOUNDATION LAMINATE FRONT	GRADE 2 LAMINATE FRONT	FLINTWOOD FRONT		
CASE FINISH								
D	W	H	Source Laminate	Source Laminate	Source Laminate	Flintwood	Source Laminate	Flintwood
12 / 305	36 / 1249	15 / 381	857	957	1078	2278	1067	2266
12 / 305	36 / 1249	24 / 610	1035	1194	1304	2794	1291	2780
12 / 305	36 / 1249	27 / 686	1079	1258	1376	2936	1362	2921
12 / 305	36 / 1249	30 / 762	1122	1321	1449	3080	1434	3064
12 / 305	36 / 1249	33 / 838	1215	1433	1571	3222	1555	3205
12 / 305	36 / 1249	36 / 914	1249	1487	1633	3363	1616	3346
12 / 305	36 / 1249	42 / 1067	1345	1623	1785	3648	1767	3629
12 / 305	42 / 1067	15 / 381	905	1021	1142	2419	1130	2406
12 / 305	42 / 1067	24 / 610	1105	1290	1398	3134	1384	3118
12 / 305	42 / 1067	27 / 686	1155	1364	1483	3309	1468	3292
12 / 305	42 / 1067	30 / 762	1205	1437	1567	3484	1551	3466
12 / 305	42 / 1067	33 / 838	1314	1569	1711	3660	1694	3641
12 / 305	42 / 1067	36 / 914	1353	1631	1785	3835	1767	3815
12 / 305	42 / 1067	42 / 1067	1465	1789	1965	4183	1945	4162
15 / 381	24 / 610	15 / 381	785	852	973	2059	963	2048
15 / 381	24 / 610	24 / 610	951	1057	1171	2400	1159	2388
15 / 381	24 / 610	27 / 686	983	1102	1222	2519	1209	2506
15 / 381	24 / 610	30 / 762	1016	1149	1271	2636	1258	2622
15 / 381	24 / 610	33 / 838	1094	1240	1366	2753	1352	2739
15 / 381	24 / 610	36 / 914	1132	1291	1422	2872	1407	2857
15 / 381	24 / 610	42 / 1067	1193	1378	1517	3106	1501	3090
15 / 381	27 / 686	15 / 381	812	887	1008	2135	998	2124
15 / 381	27 / 686	24 / 610	989	1108	1223	2527	1210	2514
15 / 381	27 / 686	27 / 686	1027	1161	1280	2654	1267	2640
15 / 381	27 / 686	30 / 762	1065	1214	1338	2781	1324	2767
15 / 381	27 / 686	33 / 838	1152	1316	1446	2908	1431	2893
15 / 381	27 / 686	36 / 914	1194	1373	1507	3035	1492	3019
15 / 381	27 / 686	42 / 1067	1265	1474	1619	3289	1602	3272
15 / 381	30 / 762	15 / 381	840	923	1045	2211	1034	2200
15 / 381	30 / 762	24 / 610	1027	1160	1272	2654	1259	2640
15 / 381	30 / 762	27 / 686	1070	1219	1338	2790	1324	2776
15 / 381	30 / 762	30 / 762	1112	1278	1403	2926	1389	2911
15 / 381	30 / 762	33 / 838	1209	1391	1523	3062	1507	3046
15 / 381	30 / 762	36 / 914	1255	1454	1592	3198	1576	3182
15 / 381	30 / 762	42 / 1067	1336	1568	1720	3471	1702	3453
15 / 381	33 / 838	15 / 381	866	957	1079	2288	1068	2276
15 / 381	33 / 838	24 / 610	1066	1212	1324	2781	1310	2767
15 / 381	33 / 838	27 / 686	1113	1277	1396	2926	1382	2911
15 / 381	33 / 838	30 / 762	1162	1344	1471	3073	1456	3057
15 / 381	33 / 838	33 / 838	1266	1466	1601	3216	1585	3200
15 / 381	33 / 838	36 / 914	1318	1536	1679	3362	1662	3345
15 / 381	33 / 838	42 / 1067	1408	1663	1821	3652	1802	3633

Pricing is continued on the following page.

upper cabinets

Xpress

CEUS

Upper Cabinet – Door(s) (Continued)

DIMENSIONS
INCHES / MM

PRICING

			NOT APPLICABLE DOOR SWING (N)					
			SOURCE LAMINATE FRONT	FOUNDATION LAMINATE FRONT	GRADE 2 LAMINATE FRONT	FLINTWOOD FRONT		
			CASE FINISH					
D	W	H	Source Laminate	Source Laminate	Source Laminate	Flintwood	Source Laminate	Flintwood
15 / 381	36 / 1249	15 / 381	893	993	1115	2363	1103	2351
15 / 381	36 / 1249	24 / 610	1103	1262	1373	2908	1359	2893
15 / 381	36 / 1249	27 / 686	1157	1336	1455	3063	1440	3047
15 / 381	36 / 1249	30 / 762	1209	1408	1537	3218	1521	3201
15 / 381	36 / 1249	33 / 838	1322	1540	1679	3372	1662	3355
15 / 381	36 / 1249	36 / 914	1379	1617	1764	3525	1746	3507
15 / 381	36 / 1249	42 / 1067	1481	1759	1923	3835	1903	3815
15 / 381	42 / 1067	15 / 381	944	1060	1181	2512	1169	2499
15 / 381	42 / 1067	24 / 610	1178	1363	1472	3288	1457	3271
15 / 381	42 / 1067	27 / 686	1240	1449	1569	3473	1553	3455
15 / 381	42 / 1067	30 / 762	1302	1534	1665	3657	1648	3638
15 / 381	42 / 1067	33 / 838	1433	1688	1832	3842	1813	3822
15 / 381	42 / 1067	36 / 914	1499	1777	1933	4027	1913	4006
15 / 381	42 / 1067	42 / 1067	1621	1945	2123	4394	2101	4372

