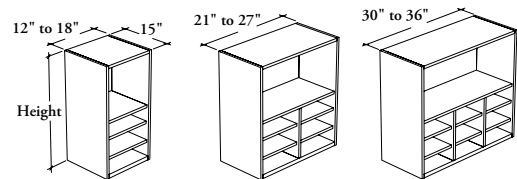


upper cabinets

Xpress

CEUPO

Upper Cabinet – Pigeonholes Section and Open



WHAT'S INCLUDED

1 upper cabinet, mounting hardware, 1 adjustable shelf for 30" to 42" height (upper section) and pigeonhole openings per column as listed below:

Pigeonhole Openings (bottom section)	12" to 18" w	21" to 27" w 1 Vertical Divider	30" to 36" w 2 Vertical Dividers
27" to 42" h	3	3	3

WHAT'S EXCLUDED

Wall-Mounted Rail for Upper Cabinet (CEUR) and Recessed LED Light (CEALED).

NOTES

Light Management with Groove Connection – None (X) is **not** available when 12" to 21" width cabinet is specified.

An Integrated End Panel **cannot** be specified on the same side as a groove connection in the Light Management options.

Pigeonhole shelves are removable, but **cannot** be adjusted.

The Pigeonhole section is always 12" high.

When a shelf is included, holes at 3" intervals in the upper section allow for shelf adjustment.

Additional Shelves for Cabinet (CEACS) are available for 30" to 42" height cabinets and must be specified separately.

Xpress See *Xpress Program* and/or specification software for finishes availability.

PRODUCT OPTIONS

Depth	Width	Height	Light Management	Integrated End Panel	Case Finish
15	12, 15, 18, 21, 24, 27, 30, 33, 36	27, 30, 33, 36, 42	B Groove Connection – Both Sides L Groove Connection – Left R Groove Connection – Right X Groove Connection – None N No Light Management	B End Panel – Both Sides (Shown) L End Panel – Left R End Panel – Right N End Panel – None	Source Laminate Flintwood (No Cathedral)

SAMPLE ORDER CODE

CEUPO 15	24	30	B	N	3G
-----------------	-----------	-----------	----------	----------	-----------

DIMENSIONS INCHES / MM

D	W	H
15 / 381	12 / 305	27 / 686
15 / 381	12 / 305	30 / 762
15 / 381	12 / 305	33 / 838
15 / 381	12 / 305	36 / 914
15 / 381	12 / 305	42 / 1067
15 / 381	15 / 381	27 / 686
15 / 381	15 / 381	30 / 762
15 / 381	15 / 381	33 / 838
15 / 381	15 / 381	36 / 914
15 / 381	15 / 381	42 / 1067
15 / 381	18 / 457	27 / 686
15 / 381	18 / 457	30 / 762
15 / 381	18 / 457	33 / 838
15 / 381	18 / 457	36 / 914
15 / 381	18 / 457	42 / 1067

PRICING

CASE FINISH	
Source Laminate	Flintwood
639	2052
691	2218
716	2248
742	2278
789	2339
688	2124
745	2297
770	2329
797	2362
845	2427
738	2195
800	2375
826	2410
854	2446
902	2516

Pricing is continued on the following page.

CEUPO
Upper Cabinet – Pigeonholes
Section and Open (Continued)

DIMENSIONS
INCHES / MM

D	W	H
15 / 381	21 / 533	27 / 686
15 / 381	21 / 533	30 / 762
15 / 381	21 / 533	33 / 838
15 / 381	21 / 533	36 / 914
15 / 381	21 / 533	42 / 1067
15 / 381	24 / 610	27 / 686
15 / 381	24 / 610	30 / 762
15 / 381	24 / 610	33 / 838
15 / 381	24 / 610	36 / 914
15 / 381	24 / 610	42 / 1067
15 / 381	27 / 686	27 / 686
15 / 381	27 / 686	30 / 762
15 / 381	27 / 686	33 / 838
15 / 381	27 / 686	36 / 914
15 / 381	27 / 686	42 / 1067
15 / 381	30 / 762	27 / 686
15 / 381	30 / 762	30 / 762
15 / 381	30 / 762	33 / 838
15 / 381	30 / 762	36 / 914
15 / 381	30 / 762	42 / 1067
15 / 381	33 / 838	27 / 686
15 / 381	33 / 838	30 / 762
15 / 381	33 / 838	33 / 838
15 / 381	33 / 838	36 / 914
15 / 381	33 / 838	42 / 1067
15 / 381	36 / 914	27 / 686
15 / 381	36 / 914	30 / 762
15 / 381	36 / 914	33 / 838
15 / 381	36 / 914	36 / 914
15 / 381	36 / 914	42 / 1067

PRICING

CASE FINISH	
Source Laminate	Flintwood
844	2605
911	2792
937	2830
966	2867
1015	2942
908	2690
982	2913
1012	2978
1046	3043
1099	3173
954	2821
1038	3054
1071	3122
1109	3191
1171	3328
1056	3288
1147	3533
1185	3605
1226	3677
1296	3820
1100	3418
1201	3673
1242	3748
1288	3823
1366	3974
1144	3548
1254	3814
1299	3892
1348	3971
1434	4129