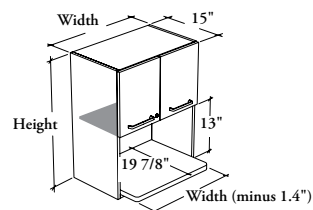


# upper cabinets

**Xpress**

## CEUMS

### Upper Cabinet – Microwave Section and Doors



#### WHAT'S INCLUDED

1 upper cabinet, pull(s) (as specified), mounting hardware, locks and keys (as specified), pass-through grommet (as specified) and adjustable shelf per compartment listed below:

| Adjustable Shelf     | 24" to 36" w |
|----------------------|--------------|
| 27" or 30" h (Shown) | n/a          |
| 33" to 42" h         | 1            |

#### WHAT'S EXCLUDED

Wall-Mounted Rail for Upper Cabinet (CEUR) and Recessed LED Light (CEALED).

#### NOTES

It is the specifier's responsibility to ensure that the appliance clearance complies with the manufacturer's recommendations.

An Integrated End Panel **cannot** be specified on the same side as a groove connection in the Light Management options.

Refer to the Application Guide for the Pass-Through Grommet location.

When specified, Pass-Through Grommet (2 3/16" x 5 7/8") is finished in Platinum.

When No Cut-Out (N) Cut-Out Style is specified, a cut-out can be drilled on-site by the installer.

When Flintwood Front Finish is specified, only Not Applicable (NA) Edge Trim Finish is available.

When Stainless (8), Finger Pull (X) or Drilled On-Site – No Pull (Z) Pull Style is specified, Pull Finish is **not** available.

When a shelf is included, holes at 1 1/4" intervals allow for shelf adjustment.

Additional Shelves for Cabinet (CEACS) are available for 33" to 42" height cabinets and must be specified separately.

**Xpress** See *Xpress Program* and/or specification software for finishes availability.

#### PRODUCT OPTIONS

| Depth | Width              | Height             | Light Management  | Integrated End Panel  | Cut-Out Style   | Hinge Style                    |
|-------|--------------------|--------------------|---|---|---|--------------------------------|
| 15    | 24, 27, 30, 33, 36 | 27, 30, 33, 36, 42 | <b>B</b> Groove Connection – Both Sides<br><b>L</b> Groove Connection – Left<br><b>R</b> Groove Connection – Right<br><b>X</b> Groove Connection – None<br><b>N</b> No Light Management | <b>B</b> End Panel – Both Sides (Shown)<br><b>L</b> End Panel – Left<br><b>R</b> End Panel – Right<br><b>N</b> End Panel – None | <b>W</b> With Pass-Through Grommet<br><b>N</b> No Cut-Out (Shown) | <b>S</b> Standard – Soft Close |

#### SAMPLE ORDER CODE

|                 |           |           |          |          |          |          |
|-----------------|-----------|-----------|----------|----------|----------|----------|
| <b>CEUMS 15</b> | <b>24</b> | <b>30</b> | <b>N</b> | <b>L</b> | <b>N</b> | <b>S</b> |
|-----------------|-----------|-----------|----------|----------|----------|----------|

#### PRODUCT OPTIONS CONTINUED

| Front Finish             | Edge Trim Finish         | Case Finish              | Pull Style                  |                                    | Pull Finish (If Applicable) | Key Style               |
|--------------------------|--------------------------|--------------------------|-----------------------------|------------------------------------|-----------------------------|-------------------------|
| Source Laminate          | Edge Trim Colors         | Source Laminate          | <b>1</b> Standard Expansion | <b>M</b> Modern Straight (ADA)     | Foundation                  | <b>K</b> Keyed Alike    |
| Foundation Laminate      | <b>NA</b> Not Applicable | Flintwood (No Cathedral) | <b>8</b> Stainless (ADA)    | <b>S</b> Slim (Shown)              | Accent                      | <b>R</b> Keyed Randomly |
| Grade 2 Laminate         |                          |                          | <b>9</b> Rectangular        | <b>X</b> Finger Pull               | Mica                        | <b>N</b> No Lock        |
| Flintwood (No Cathedral) |                          |                          | <b>E</b> Edge – Standard    | <b>Z</b> Drilled On-Site – No Pull |                             |                         |
|                          |                          |                          | <b>F</b> Edge – Small       |                                    |                             |                         |

#### SAMPLE ORDER CODE CONTINUED

|           |           |           |          |  |          |
|-----------|-----------|-----------|----------|--|----------|
| <b>3G</b> | <b>4G</b> | <b>3G</b> | <b>8</b> |  | <b>K</b> |
|-----------|-----------|-----------|----------|--|----------|

See Pricing on the following page.

**C E U M S**

**Upper Cabinet – Microwave Section  
and Doors (Continued)**

**DIMENSIONS  
INCHES / MM**

**PRICING**

|          |          |           | <b>SOURCE LAMINATE FRONT</b> | <b>FOUNDATION LAMINATE FRONT</b> | <b>GRADE 2 LAMINATE FRONT</b> | <b>FLINTWOOD FRONT</b> |                        |                  |
|----------|----------|-----------|------------------------------|----------------------------------|-------------------------------|------------------------|------------------------|------------------|
|          |          |           | <b>CASE FINISH</b>           |                                  |                               |                        |                        |                  |
| <b>D</b> | <b>W</b> | <b>H</b>  | <b>Source Laminate</b>       | <b>Source Laminate</b>           | <b>Source Laminate</b>        | <b>Flintwood</b>       | <b>Source Laminate</b> | <b>Flintwood</b> |
| 15 / 381 | 24 / 610 | 27 / 686  | 913                          | 966                              | 1100                          | 2392                   | 1089                   | 2380             |
| 15 / 381 | 24 / 610 | 30 / 762  | 948                          | 1015                             | 1148                          | 2476                   | 1136                   | 2463             |
| 15 / 381 | 24 / 610 | 33 / 838  | 1026                         | 1106                             | 1241                          | 2735                   | 1228                   | 2721             |
| 15 / 381 | 24 / 610 | 36 / 914  | 1074                         | 1167                             | 1297                          | 2823                   | 1284                   | 2808             |
| 15 / 381 | 24 / 610 | 42 / 1067 | 1154                         | 1273                             | 1396                          | 2997                   | 1382                   | 2982             |
| 15 / 381 | 27 / 686 | 27 / 686  | 955                          | 1015                             | 1144                          | 2514                   | 1132                   | 2501             |
| 15 / 381 | 27 / 686 | 30 / 762  | 994                          | 1069                             | 1197                          | 2603                   | 1185                   | 2590             |
| 15 / 381 | 27 / 686 | 33 / 838  | 1083                         | 1173                             | 1305                          | 2882                   | 1292                   | 2867             |
| 15 / 381 | 27 / 686 | 36 / 914  | 1132                         | 1237                             | 1366                          | 2974                   | 1352                   | 2959             |
| 15 / 381 | 27 / 686 | 42 / 1067 | 1219                         | 1353                             | 1476                          | 3159                   | 1461                   | 3143             |
| 15 / 381 | 30 / 762 | 27 / 686  | 997                          | 1064                             | 1187                          | 2637                   | 1175                   | 2623             |
| 15 / 381 | 30 / 762 | 30 / 762  | 1040                         | 1123                             | 1248                          | 2732                   | 1235                   | 2718             |
| 15 / 381 | 30 / 762 | 33 / 838  | 1139                         | 1239                             | 1369                          | 3030                   | 1355                   | 3014             |
| 15 / 381 | 30 / 762 | 36 / 914  | 1191                         | 1307                             | 1436                          | 3127                   | 1421                   | 3111             |
| 15 / 381 | 30 / 762 | 42 / 1067 | 1285                         | 1434                             | 1556                          | 3321                   | 1540                   | 3304             |
| 15 / 381 | 33 / 838 | 27 / 686  | 1039                         | 1112                             | 1231                          | 2759                   | 1218                   | 2745             |
| 15 / 381 | 33 / 838 | 30 / 762  | 1087                         | 1178                             | 1298                          | 2861                   | 1285                   | 2846             |
| 15 / 381 | 33 / 838 | 33 / 838  | 1194                         | 1303                             | 1433                          | 3177                   | 1418                   | 3161             |
| 15 / 381 | 33 / 838 | 36 / 914  | 1250                         | 1378                             | 1504                          | 3279                   | 1489                   | 3262             |
| 15 / 381 | 33 / 838 | 42 / 1067 | 1350                         | 1514                             | 1635                          | 3482                   | 1618                   | 3464             |
| 15 / 381 | 36 / 914 | 27 / 686  | 1082                         | 1162                             | 1276                          | 2881                   | 1263                   | 2866             |
| 15 / 381 | 36 / 914 | 30 / 762  | 1135                         | 1235                             | 1349                          | 2987                   | 1335                   | 2972             |
| 15 / 381 | 36 / 914 | 33 / 838  | 1250                         | 1369                             | 1496                          | 3325                   | 1481                   | 3308             |
| 15 / 381 | 36 / 914 | 36 / 914  | 1309                         | 1448                             | 1573                          | 3431                   | 1557                   | 3413             |
| 15 / 381 | 36 / 914 | 42 / 1067 | 1417                         | 1596                             | 1715                          | 3644                   | 1698                   | 3625             |