

upper cabinets

Xpress

CEUG

Upper Cabinet – Glass Door(s)

WHAT'S INCLUDED

1 upper cabinet, mounting hardware, locks and keys (as specified), and adjustable shelf(ves) per compartment listed below:

| Adjustable Shelf(ves) | 12" to 36" w | 42" w 1 Vertical Divider |
|-----------------------|--------------|-----------------------------|
| 15" h | n/a | n/a |
| 24" or 30" h (Shown) | 1 | 1 |
| 33" to 42" h | 2 | 2 |

WHAT'S EXCLUDED

Wall-Mounted Rail for Upper Cabinet (CEUR) and Recessed LED Light (CEALED).

NOTES

Light Management with Groove Connection – None (X) is **not** available when 12" to 21" width cabinet is specified.

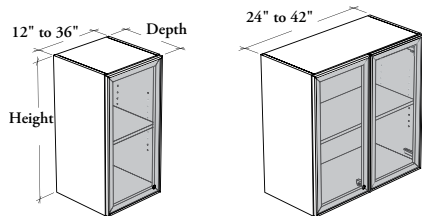
Light Management with Groove Connection – Left (L) or – Right (R) are **not** available when 12" or 15" width with 15" height is specified.

An Integrated End Panel **cannot** be specified on the same side as a groove connection in the Light Management options.

When a shelf is included, holes at 1 1/4" intervals allow for shelf adjustment.

Additional Shelves for Cabinet (CEACS) are available for 24" to 42" height cabinets and must be specified separately.

Xpress See *Xpress Program* and/or specification software for finishes availability.



PRODUCT OPTIONS

| Depth | Width | Height | Light Management | Integrated End Panel | Door Swing Direction | Hinge Style |
|--------|--|----------------------------|---|---|--|--------------------------------|
| 12, 15 | 12, 15, 18, 21, 24, 27, 30, 33, 36, 39, 42 | 15, 24, 27, 30, 33, 36, 42 | B Groove Connection – Both Sides L Groove Connection – Left R Groove Connection – Right X Groove Connection – None N No Light Management | B End Panel – Both Sides (Shown) L End Panel – Left R End Panel – Right N End Panel – None | L Door Swing – Left (Shown) R Door Swing – Right N Not Applicable (Shown) | S Standard – Soft Close |

SAMPLE ORDER CODE

| | | | | | | |
|----------------|-----------|-----------|----------|----------|----------|----------|
| CEUG 15 | 24 | 30 | N | L | N | S |
|----------------|-----------|-----------|----------|----------|----------|----------|

PRODUCT OPTIONS CONTINUED

| Case Finish | Door Frame Finish | Glass Door Finish | Pull Style | Key Style |
|--|------------------------------|---|----------------------|---|
| Source Laminate Flintwood (No Cathedral) | Foundation Accent Mica | Standard: CL Clear FT Frosted Back-Painted | X Finger Pull | K Keyed Alike R Keyed Randomly N No Lock |

SAMPLE ORDER CODE CONTINUED

| | | | | |
|-----------|-----------|-----------|----------|----------|
| 3D | 83 | K7 | X | K |
|-----------|-----------|-----------|----------|----------|

See Pricing on the following page.

CEUG

Upper Cabinet – Glass Door(s)
(Continued)

DIMENSIONS
INCHES / MM

PRICING

KEY UPCHARGE

| DIMENSIONS INCHES / MM | | | LEFT (L) OR RIGHT (R) DOOR SWING | | | | KEY UPCHARGE |
|---------------------------|----------|-----------|----------------------------------|------------------------------|----------------|------------------------------|-------------------------------|
| | | | SOURCE LAMINATE CASE | | FLINTWOOD CASE | | |
| D | W | H | Clear (CL) | Frosted (FT) or Back-Painted | Clear (CL) | Frosted (FT) or Back-Painted | Keyed Alike or Keyed Randomly |
| 12 / 305 | 12 / 305 | 15 / 381 | 763 | 766 | 1669 | 1672 | 56 |
| 12 / 305 | 12 / 305 | 24 / 610 | 872 | 879 | 2033 | 2040 | 56 |
| 12 / 305 | 12 / 305 | 27 / 686 | 903 | 909 | 2095 | 2101 | 56 |
| 12 / 305 | 12 / 305 | 30 / 762 | 934 | 938 | 2157 | 2161 | 56 |
| 12 / 305 | 12 / 305 | 33 / 838 | 991 | 995 | 2222 | 2226 | 56 |
| 12 / 305 | 12 / 305 | 36 / 914 | 1012 | 1024 | 2279 | 2291 | 56 |
| 12 / 305 | 12 / 305 | 42 / 1067 | 1067 | 1094 | 2392 | 2419 | 56 |
| 12 / 305 | 15 / 381 | 15 / 381 | 798 | 807 | 1714 | 1723 | 56 |
| 12 / 305 | 15 / 381 | 24 / 610 | 923 | 932 | 2100 | 2109 | 56 |
| 12 / 305 | 15 / 381 | 27 / 686 | 956 | 964 | 2167 | 2175 | 56 |
| 12 / 305 | 15 / 381 | 30 / 762 | 989 | 995 | 2233 | 2239 | 56 |
| 12 / 305 | 15 / 381 | 33 / 838 | 1047 | 1055 | 2299 | 2307 | 56 |
| 12 / 305 | 15 / 381 | 36 / 914 | 1068 | 1083 | 2358 | 2373 | 56 |
| 12 / 305 | 15 / 381 | 42 / 1067 | 1125 | 1155 | 2478 | 2508 | 56 |
| 12 / 305 | 18 / 457 | 15 / 381 | 834 | 847 | 1760 | 1773 | 56 |
| 12 / 305 | 18 / 457 | 24 / 610 | 974 | 985 | 2167 | 2178 | 56 |
| 12 / 305 | 18 / 457 | 27 / 686 | 1009 | 1019 | 2238 | 2248 | 56 |
| 12 / 305 | 18 / 457 | 30 / 762 | 1044 | 1053 | 2310 | 2319 | 56 |
| 12 / 305 | 18 / 457 | 33 / 838 | 1103 | 1117 | 2374 | 2388 | 56 |
| 12 / 305 | 18 / 457 | 36 / 914 | 1124 | 1144 | 2437 | 2457 | 56 |
| 12 / 305 | 18 / 457 | 42 / 1067 | 1184 | 1216 | 2564 | 2596 | 56 |
| 12 / 305 | 21 / 533 | 15 / 381 | 870 | 888 | 1807 | 1825 | 56 |
| 12 / 305 | 21 / 533 | 24 / 610 | 1021 | 1037 | 2230 | 2246 | 56 |
| 12 / 305 | 21 / 533 | 27 / 686 | 1059 | 1074 | 2306 | 2321 | 56 |
| 12 / 305 | 21 / 533 | 30 / 762 | 1096 | 1111 | 2382 | 2397 | 56 |
| 12 / 305 | 21 / 533 | 33 / 838 | 1159 | 1178 | 2450 | 2469 | 56 |
| 12 / 305 | 21 / 533 | 36 / 914 | 1180 | 1204 | 2517 | 2541 | 56 |
| 12 / 305 | 21 / 533 | 42 / 1067 | 1244 | 1277 | 2651 | 2684 | 56 |
| 15 / 381 | 12 / 305 | 15 / 381 | 784 | 787 | 1709 | 1712 | 56 |
| 15 / 381 | 12 / 305 | 24 / 610 | 902 | 909 | 2105 | 2112 | 56 |
| 15 / 381 | 12 / 305 | 27 / 686 | 940 | 946 | 2171 | 2177 | 56 |
| 15 / 381 | 12 / 305 | 30 / 762 | 977 | 981 | 2237 | 2241 | 56 |
| 15 / 381 | 12 / 305 | 33 / 838 | 1043 | 1047 | 2306 | 2310 | 56 |
| 15 / 381 | 12 / 305 | 36 / 914 | 1076 | 1088 | 2365 | 2377 | 56 |
| 15 / 381 | 12 / 305 | 42 / 1067 | 1138 | 1165 | 2486 | 2513 | 56 |
| 15 / 381 | 15 / 381 | 15 / 381 | 821 | 830 | 1759 | 1768 | 56 |
| 15 / 381 | 15 / 381 | 24 / 610 | 959 | 968 | 2174 | 2183 | 56 |
| 15 / 381 | 15 / 381 | 27 / 686 | 998 | 1006 | 2246 | 2254 | 56 |
| 15 / 381 | 15 / 381 | 30 / 762 | 1037 | 1043 | 2318 | 2324 | 56 |
| 15 / 381 | 15 / 381 | 33 / 838 | 1105 | 1113 | 2387 | 2395 | 56 |
| 15 / 381 | 15 / 381 | 36 / 914 | 1139 | 1154 | 2452 | 2467 | 56 |
| 15 / 381 | 15 / 381 | 42 / 1067 | 1201 | 1231 | 2581 | 2611 | 56 |

Pricing is continued on the following page.

upper cabinets

Xpress

CEUG

Upper Cabinet – Glass Door(s) (Continued)

DIMENSIONS
INCHES / MM

PRICING

KEY UPCHARGE

| DIMENSIONS | | | PRICING | | | | KEY UPCHARGE |
|------------|----------|-----------|----------------------------------|------------------------------|----------------|------------------------------|-------------------------------|
| | | | LEFT (L) OR RIGHT (R) DOOR SWING | | | | |
| | | | SOURCE LAMINATE CASE | | FLINTWOOD CASE | | |
| D | W | H | Clear (CL) | Frosted (FT) or Back-Painted | Clear (CL) | Frosted (FT) or Back-Painted | Keyed Alike or Keyed Randomly |
| 15 / 381 | 18 / 457 | 15 / 381 | 858 | 871 | 1809 | 1822 | |
| 15 / 381 | 18 / 457 | 24 / 610 | 1016 | 1027 | 2242 | 2253 | 56 |
| 15 / 381 | 18 / 457 | 27 / 686 | 1056 | 1066 | 2320 | 2330 | 56 |
| 15 / 381 | 18 / 457 | 30 / 762 | 1097 | 1106 | 2397 | 2406 | 56 |
| 15 / 381 | 18 / 457 | 33 / 838 | 1165 | 1179 | 2467 | 2481 | 56 |
| 15 / 381 | 18 / 457 | 36 / 914 | 1200 | 1220 | 2537 | 2557 | 56 |
| 15 / 381 | 18 / 457 | 42 / 1067 | 1262 | 1294 | 2676 | 2708 | 56 |
| 15 / 381 | 21 / 533 | 15 / 381 | 896 | 914 | 1860 | 1878 | 56 |
| 15 / 381 | 21 / 533 | 24 / 610 | 1069 | 1085 | 2307 | 2323 | 56 |
| 15 / 381 | 21 / 533 | 27 / 686 | 1111 | 1126 | 2391 | 2406 | 56 |
| 15 / 381 | 21 / 533 | 30 / 762 | 1153 | 1168 | 2474 | 2489 | 56 |
| 15 / 381 | 21 / 533 | 33 / 838 | 1226 | 1245 | 2549 | 2568 | 56 |
| 15 / 381 | 21 / 533 | 36 / 914 | 1263 | 1287 | 2623 | 2647 | 56 |
| 15 / 381 | 21 / 533 | 42 / 1067 | 1325 | 1358 | 2771 | 2804 | 56 |
| | | | NOT APPLICABLE DOOR SWING (N) | | | | |
| 12 / 305 | 24 / 610 | 15 / 381 | 1227 | 1249 | 2272 | 2294 | 56 |
| 12 / 305 | 24 / 610 | 24 / 610 | 1419 | 1437 | 2614 | 2632 | 56 |
| 12 / 305 | 24 / 610 | 27 / 686 | 1471 | 1488 | 2730 | 2747 | 56 |
| 12 / 305 | 24 / 610 | 30 / 762 | 1523 | 1539 | 2846 | 2862 | 56 |
| 12 / 305 | 24 / 610 | 33 / 838 | 1601 | 1622 | 2951 | 2972 | 56 |
| 12 / 305 | 24 / 610 | 36 / 914 | 1632 | 1659 | 3055 | 3082 | 56 |
| 12 / 305 | 24 / 610 | 42 / 1067 | 1724 | 1762 | 3265 | 3303 | 56 |
| 12 / 305 | 27 / 686 | 15 / 381 | 1258 | 1280 | 2341 | 2363 | 56 |
| 12 / 305 | 27 / 686 | 24 / 610 | 1460 | 1479 | 2728 | 2747 | 56 |
| 12 / 305 | 27 / 686 | 27 / 686 | 1515 | 1533 | 2849 | 2867 | 56 |
| 12 / 305 | 27 / 686 | 30 / 762 | 1571 | 1588 | 2970 | 2987 | 56 |
| 12 / 305 | 27 / 686 | 33 / 838 | 1656 | 1679 | 3081 | 3104 | 56 |
| 12 / 305 | 27 / 686 | 36 / 914 | 1692 | 1721 | 3191 | 3220 | 56 |
| 12 / 305 | 27 / 686 | 42 / 1067 | 1789 | 1831 | 3410 | 3452 | 56 |
| 12 / 305 | 30 / 762 | 15 / 381 | 1288 | 1311 | 2410 | 2433 | 56 |
| 12 / 305 | 30 / 762 | 24 / 610 | 1500 | 1520 | 2843 | 2863 | 56 |
| 12 / 305 | 30 / 762 | 27 / 686 | 1559 | 1578 | 2969 | 2988 | 56 |
| 12 / 305 | 30 / 762 | 30 / 762 | 1617 | 1636 | 3094 | 3113 | 56 |
| 12 / 305 | 30 / 762 | 33 / 838 | 1710 | 1735 | 3210 | 3235 | 56 |
| 12 / 305 | 30 / 762 | 36 / 914 | 1750 | 1781 | 3326 | 3357 | 56 |
| 12 / 305 | 30 / 762 | 42 / 1067 | 1856 | 1900 | 3557 | 3601 | 56 |
| 12 / 305 | 33 / 838 | 15 / 381 | 1319 | 1342 | 2479 | 2502 | 56 |
| 12 / 305 | 33 / 838 | 24 / 610 | 1541 | 1562 | 2956 | 2977 | 56 |
| 12 / 305 | 33 / 838 | 27 / 686 | 1603 | 1623 | 3087 | 3107 | 56 |
| 12 / 305 | 33 / 838 | 30 / 762 | 1665 | 1685 | 3218 | 3238 | 56 |
| 12 / 305 | 33 / 838 | 33 / 838 | 1765 | 1792 | 3339 | 3366 | 56 |
| 12 / 305 | 33 / 838 | 36 / 914 | 1809 | 1843 | 3461 | 3495 | 56 |
| 12 / 305 | 33 / 838 | 42 / 1067 | 1924 | 1971 | 3704 | 3751 | 56 |

Pricing is continued on the following page.

CEUG

Upper Cabinet – Glass Door(s)
(Continued)

DIMENSIONS
INCHES / MM

PRICING

KEY UPCHARGE

| DIMENSIONS | | | PRICING | | | | KEY UPCHARGE |
|--------------------------------------|-----------|-----------|----------------------|------------------------------|----------------|------------------------------|-------------------------------|
| INCHES / MM | | | SOURCE LAMINATE CASE | | FLINTWOOD CASE | | |
| D | W | H | Clear (CL) | Frosted (FT) or Back-Painted | Clear (CL) | Frosted (FT) or Back-Painted | Keyed Alike or Keyed Randomly |
| NOT APPLICABLE DOOR SWING (N) | | | | | | | |
| 12 / 305 | 36 / 914 | 15 / 381 | 1350 | 1372 | 2549 | 2571 | 56 |
| 12 / 305 | 36 / 914 | 24 / 610 | 1582 | 1604 | 3071 | 3093 | 56 |
| 12 / 305 | 36 / 914 | 27 / 686 | 1648 | 1670 | 3207 | 3229 | 56 |
| 12 / 305 | 36 / 914 | 30 / 762 | 1713 | 1735 | 3343 | 3365 | 56 |
| 12 / 305 | 36 / 914 | 33 / 838 | 1820 | 1849 | 3470 | 3499 | 56 |
| 12 / 305 | 36 / 914 | 36 / 914 | 1867 | 1903 | 3597 | 3633 | 56 |
| 12 / 305 | 36 / 914 | 42 / 1067 | 1989 | 2040 | 3851 | 3902 | 56 |
| 12 / 305 | 42 / 1067 | 15 / 381 | 1408 | 1434 | 2684 | 2710 | 56 |
| 12 / 305 | 42 / 1067 | 24 / 610 | 1661 | 1686 | 3395 | 3420 | 56 |
| 12 / 305 | 42 / 1067 | 27 / 686 | 1733 | 1758 | 3557 | 3582 | 56 |
| 12 / 305 | 42 / 1067 | 30 / 762 | 1804 | 1829 | 3719 | 3744 | 56 |
| 12 / 305 | 42 / 1067 | 33 / 838 | 1928 | 1960 | 3875 | 3907 | 56 |
| 12 / 305 | 42 / 1067 | 36 / 914 | 1981 | 2022 | 4029 | 4070 | 56 |
| 12 / 305 | 42 / 1067 | 42 / 1067 | 2121 | 2177 | 4338 | 4394 | 56 |
| 15 / 381 | 24 / 610 | 15 / 381 | 1256 | 1278 | 2341 | 2363 | 56 |
| 15 / 381 | 24 / 610 | 24 / 610 | 1479 | 1497 | 2708 | 2726 | 56 |
| 15 / 381 | 24 / 610 | 27 / 686 | 1535 | 1552 | 2832 | 2849 | 56 |
| 15 / 381 | 24 / 610 | 30 / 762 | 1591 | 1607 | 2955 | 2971 | 56 |
| 15 / 381 | 24 / 610 | 33 / 838 | 1681 | 1702 | 3068 | 3089 | 56 |
| 15 / 381 | 24 / 610 | 36 / 914 | 1730 | 1757 | 3180 | 3207 | 56 |
| 15 / 381 | 24 / 610 | 42 / 1067 | 1816 | 1854 | 3405 | 3443 | 56 |
| 15 / 381 | 27 / 686 | 15 / 381 | 1289 | 1311 | 2415 | 2437 | 56 |
| 15 / 381 | 27 / 686 | 24 / 610 | 1522 | 1541 | 2826 | 2845 | 56 |
| 15 / 381 | 27 / 686 | 27 / 686 | 1583 | 1601 | 2956 | 2974 | 56 |
| 15 / 381 | 27 / 686 | 30 / 762 | 1644 | 1661 | 3087 | 3104 | 56 |
| 15 / 381 | 27 / 686 | 33 / 838 | 1744 | 1767 | 3206 | 3229 | 56 |
| 15 / 381 | 27 / 686 | 36 / 914 | 1798 | 1827 | 3325 | 3354 | 56 |
| 15 / 381 | 27 / 686 | 42 / 1067 | 1893 | 1935 | 3563 | 3605 | 56 |
| 15 / 381 | 30 / 762 | 15 / 381 | 1321 | 1344 | 2487 | 2510 | 56 |
| 15 / 381 | 30 / 762 | 24 / 610 | 1565 | 1585 | 2946 | 2966 | 56 |
| 15 / 381 | 30 / 762 | 27 / 686 | 1630 | 1649 | 3082 | 3101 | 56 |
| 15 / 381 | 30 / 762 | 30 / 762 | 1695 | 1714 | 3217 | 3236 | 56 |
| 15 / 381 | 30 / 762 | 33 / 838 | 1804 | 1829 | 3343 | 3368 | 56 |
| 15 / 381 | 30 / 762 | 36 / 914 | 1864 | 1895 | 3470 | 3501 | 56 |
| 15 / 381 | 30 / 762 | 42 / 1067 | 1970 | 2014 | 3721 | 3765 | 56 |
| 15 / 381 | 33 / 838 | 15 / 381 | 1353 | 1376 | 2561 | 2584 | 56 |
| 15 / 381 | 33 / 838 | 24 / 610 | 1608 | 1629 | 3065 | 3086 | 56 |
| 15 / 381 | 33 / 838 | 27 / 686 | 1678 | 1698 | 3207 | 3227 | 56 |
| 15 / 381 | 33 / 838 | 30 / 762 | 1749 | 1769 | 3350 | 3370 | 56 |
| 15 / 381 | 33 / 838 | 33 / 838 | 1866 | 1893 | 3481 | 3508 | 56 |
| 15 / 381 | 33 / 838 | 36 / 914 | 1931 | 1965 | 3614 | 3648 | 56 |
| 15 / 381 | 33 / 838 | 42 / 1067 | 2048 | 2095 | 3879 | 3926 | 56 |

Pricing is continued on the following page.

upper cabinets

Xpress

CEUG

Upper Cabinet – Glass Door(s) (Continued)

DIMENSIONS
INCHES / MM

PRICING

KEY UPCHARGE

| DIMENSIONS | | | PRICING | | | | KEY UPCHARGE |
|------------|-----------|-----------|----------------------|------------------------------|----------------|------------------------------|-------------------------------|
| D | W | H | SOURCE LAMINATE CASE | | FLINTWOOD CASE | | |
| | | | Clear (CL) | Frosted (FT) or Back-Painted | Clear (CL) | Frosted (FT) or Back-Painted | Keyed Alike or Keyed Randomly |
| 15 / 381 | 36 / 914 | 15 / 381 | 1386 | 1408 | 2634 | 2656 | 56 |
| 15 / 381 | 36 / 914 | 24 / 610 | 1650 | 1672 | 3184 | 3206 | 56 |
| 15 / 381 | 36 / 914 | 27 / 686 | 1726 | 1748 | 3333 | 3355 | 56 |
| 15 / 381 | 36 / 914 | 30 / 762 | 1800 | 1822 | 3480 | 3502 | 56 |
| 15 / 381 | 36 / 914 | 33 / 838 | 1927 | 1956 | 3620 | 3649 | 56 |
| 15 / 381 | 36 / 914 | 36 / 914 | 1997 | 2033 | 3758 | 3794 | 56 |
| 15 / 381 | 36 / 914 | 42 / 1067 | 2125 | 2176 | 4037 | 4088 | 56 |
| 15 / 381 | 42 / 1067 | 15 / 381 | 1447 | 1473 | 2777 | 2803 | 56 |
| 15 / 381 | 42 / 1067 | 24 / 610 | 1734 | 1759 | 3548 | 3573 | 56 |
| 15 / 381 | 42 / 1067 | 27 / 686 | 1818 | 1843 | 3720 | 3745 | 56 |
| 15 / 381 | 42 / 1067 | 30 / 762 | 1901 | 1926 | 3891 | 3916 | 56 |
| 15 / 381 | 42 / 1067 | 33 / 838 | 2047 | 2079 | 4056 | 4088 | 56 |
| 15 / 381 | 42 / 1067 | 36 / 914 | 2127 | 2168 | 4220 | 4261 | 56 |
| 15 / 381 | 42 / 1067 | 42 / 1067 | 2277 | 2333 | 4548 | 4604 | 56 |

