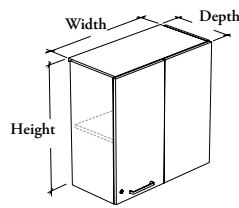


# upper cabinets

**Xpress**

## CEUCS

### Upper Cabinet for Blind Corner – Door



#### WHAT'S INCLUDED

1 upper cabinet, 1 fixed panel, 1 pull (as specified), mounting hardware, locks and keys (as specified) and adjustable shelf(ves) listed below:

Adjustable Shelf(ves)	24" to 36" w
24" to 30" h (Shown)	1
33" to 42" h	2

#### WHAT'S EXCLUDED

Wall-Mounted Rail for Upper Cabinet (CEUR) and Recessed LED Light (CEALED).

#### NOTES

Light Management with Groove Connection (L or R) and Integrated End Panel **cannot** be specified on the Fixed Panel side.

An Integrated End Panel **cannot** be specified on the same side as a groove connection in the Light Management options.

When Flintwood Door and Fixed Panel Finish is specified, only Not Applicable (NA) Edge Trim Finish is available.

When Stainless (8), Finger Pull (X) or Drilled On-Site – No Pull (Z) Pull Style is specified, Pull Finish is **not** available.

The Fixed Panel is always half the width of the cabinet.

When a shelf is included, holes at 1 1/4" intervals allow for shelf adjustment.

Additional Shelves for Cabinet (CEACS) are available and must be specified separately.

**Xpress** See *Xpress Program* and/or specification software for finishes availability.

#### PRODUCT OPTIONS

Depth	Width	Height	Fixed Panel Position	Light Management	Integrated End Panel	Hinge Style
12, 15	24, 27, 30, 33, 36	24, 27, 30, 33, 36, 42	<b>L</b> Fixed Panel – Left <b>R</b> Fixed Panel – Right (Shown)	<b>L</b> Groove Connection – Left <b>R</b> Groove Connection – Right <b>X</b> Groove Connection – None <b>N</b> No Light Management	<b>L</b> End Panel – Left <b>R</b> End Panel – Right <b>N</b> End Panel – None (Shown)	<b>S</b> Standard – Soft Close

#### SAMPLE ORDER CODE

<b>CEUCS 15</b>	<b>24</b>	<b>30</b>	<b>L</b>	<b>N</b>	<b>N</b>	<b>S</b>
-----------------	-----------	-----------	----------	----------	----------	----------

#### PRODUCT OPTIONS CONTINUED

Door and Fixed Panel Finish	Edge Trim Finish	Case Finish	Pull Style		Pull Finish (If Applicable)	Key Style
Source Laminate	Edge Trim Colors	Source Laminate	<b>1</b> Standard Expansion	<b>M</b> Modern Straight (ADA)	Foundation	<b>K</b> Keyed Alike
Foundation Laminate	<b>NA</b> Not Applicable	Flintwood (No Cathedral)	<b>8</b> Stainless (ADA)	<b>S</b> Slim (Shown)	Accent	<b>R</b> Keyed Randomly
Grade 2 Laminate			<b>9</b> Rectangular	<b>X</b> Finger Pull	Mica	<b>N</b> No Lock
Flintwood (No Cathedral)			<b>E</b> Edge – Standard	<b>Z</b> Drilled On-Site – No Pull		
			<b>F</b> Edge – Small			

#### SAMPLE ORDER CODE CONTINUED

<b>3G</b>	<b>4G</b>	<b>3G</b>	<b>X</b>		<b>K</b>
-----------	-----------	-----------	----------	--	----------

See Pricing on the following page.

CEUCS

Upper Cabinet for Blind Corner – Door (Continued)

DIMENSIONS  
INCHES / MM

PRICING

			SOURCE LAMINATE DOOR & FIXED PANEL	FOUNDATION LAMINATE DOOR & FIXED PANEL	GRADE 2 LAMINATE DOOR & FIXED PANEL	FLINTWOOD DOOR & FIXED PANEL		
			CASE FINISH					
D	W	H	Source Laminate	Source Laminate	Source Laminate	Flintwood	Source Laminate	Flintwood
12 / 305	24 / 610	24 / 610	891	997	1106	2301	1099	2294
12 / 305	24 / 610	27 / 686	919	1038	1161	2420	1145	2404
12 / 305	24 / 610	30 / 762	948	1081	1217	2540	1190	2513
12 / 305	24 / 610	33 / 838	1014	1160	1310	2660	1272	2622
12 / 305	24 / 610	36 / 914	1034	1193	1357	2780	1309	2732
12 / 305	24 / 610	42 / 1067	1101	1286	1478	3019	1409	2950
12 / 305	27 / 686	24 / 610	927	1046	1169	2437	1148	2416
12 / 305	27 / 686	27 / 686	959	1093	1232	2566	1199	2533
12 / 305	27 / 686	30 / 762	992	1141	1295	2694	1251	2650
12 / 305	27 / 686	33 / 838	1064	1228	1397	2822	1343	2768
12 / 305	27 / 686	36 / 914	1088	1267	1451	2950	1386	2885
12 / 305	27 / 686	42 / 1067	1161	1370	1585	3206	1498	3119
12 / 305	30 / 762	24 / 610	962	1095	1231	2574	1194	2537
12 / 305	30 / 762	27 / 686	999	1148	1302	2712	1253	2663
12 / 305	30 / 762	30 / 762	1034	1200	1370	2847	1311	2788
12 / 305	30 / 762	33 / 838	1115	1297	1485	2985	1413	2913
12 / 305	30 / 762	36 / 914	1141	1340	1545	3121	1462	3038
12 / 305	30 / 762	42 / 1067	1222	1454	1693	3394	1588	3289
12 / 305	33 / 838	24 / 610	999	1145	1295	2710	1243	2658
12 / 305	33 / 838	27 / 686	1038	1202	1371	2855	1307	2791
12 / 305	33 / 838	30 / 762	1078	1260	1448	3001	1372	2925
12 / 305	33 / 838	33 / 838	1165	1365	1572	3146	1484	3058
12 / 305	33 / 838	36 / 914	1196	1414	1640	3292	1540	3192
12 / 305	33 / 838	42 / 1067	1284	1539	1802	3582	1678	3458
12 / 305	36 / 914	24 / 610	1035	1194	1358	2847	1291	2780
12 / 305	36 / 914	27 / 686	1079	1258	1442	3001	1362	2921
12 / 305	36 / 914	30 / 762	1122	1321	1526	3156	1434	3064
12 / 305	36 / 914	33 / 838	1215	1433	1659	3309	1555	3205
12 / 305	36 / 914	36 / 914	1249	1487	1733	3463	1616	3346
12 / 305	36 / 914	42 / 1067	1345	1623	1910	3772	1767	3629
15 / 381	24 / 610	24 / 610	951	1057	1166	2395	1159	2388
15 / 381	24 / 610	27 / 686	983	1102	1225	2522	1209	2506
15 / 381	24 / 610	30 / 762	1016	1149	1285	2649	1258	2622
15 / 381	24 / 610	33 / 838	1094	1240	1390	2777	1352	2739
15 / 381	24 / 610	36 / 914	1132	1291	1455	2905	1407	2857
15 / 381	24 / 610	42 / 1067	1193	1378	1570	3159	1501	3090
15 / 381	27 / 686	24 / 610	989	1108	1231	2535	1210	2514
15 / 381	27 / 686	27 / 686	1027	1161	1300	2673	1267	2640
15 / 381	27 / 686	30 / 762	1065	1214	1368	2811	1324	2767
15 / 381	27 / 686	33 / 838	1152	1316	1485	2947	1431	2893
15 / 381	27 / 686	36 / 914	1194	1373	1557	3084	1492	3019
15 / 381	27 / 686	42 / 1067	1265	1474	1689	3359	1602	3272

Pricing is continued on the following page.

# upper cabinets

**Xpress**

## CEUCS

### Upper Cabinet for Blind Corner – Door (Continued)

DIMENSIONS  
INCHES / MM

PRICING

			SOURCE LAMINATE DOOR & FIXED PANEL		FOUNDATION LAMINATE DOOR & FIXED PANEL		GRADE 2 LAMINATE DOOR & FIXED PANEL		FLINTWOOD DOOR & FIXED PANEL	
			CASE FINISH							
D	W	H	Source Laminate	Source Laminate	Source Laminate	Flintwood	Source Laminate	Flintwood	Source Laminate	Flintwood
15 / 381	30 / 762	24 / 610	1027	1160	1296	2677	1259	2640		
15 / 381	30 / 762	27 / 686	1070	1219	1373	2825	1324	2776		
15 / 381	30 / 762	30 / 762	1112	1278	1448	2970	1389	2911		
15 / 381	30 / 762	33 / 838	1209	1391	1579	3118	1507	3046		
15 / 381	30 / 762	36 / 914	1255	1454	1659	3265	1576	3182		
15 / 381	30 / 762	42 / 1067	1336	1568	1807	3558	1702	3453		
15 / 381	33 / 838	24 / 610	1066	1212	1362	2819	1310	2767		
15 / 381	33 / 838	27 / 686	1113	1277	1446	2975	1382	2911		
15 / 381	33 / 838	30 / 762	1162	1344	1532	3133	1456	3057		
15 / 381	33 / 838	33 / 838	1266	1466	1673	3288	1585	3200		
15 / 381	33 / 838	36 / 914	1318	1536	1762	3445	1662	3345		
15 / 381	33 / 838	42 / 1067	1408	1663	1926	3757	1802	3633		
15 / 381	36 / 914	24 / 610	1103	1262	1426	2960	1359	2893		
15 / 381	36 / 914	27 / 686	1157	1336	1520	3127	1440	3047		
15 / 381	36 / 914	30 / 762	1209	1408	1613	3293	1521	3201		
15 / 381	36 / 914	33 / 838	1322	1540	1766	3459	1662	3355		
15 / 381	36 / 914	36 / 914	1379	1617	1863	3624	1746	3507		
15 / 381	36 / 914	42 / 1067	1481	1759	2046	3958	1903	3815		

