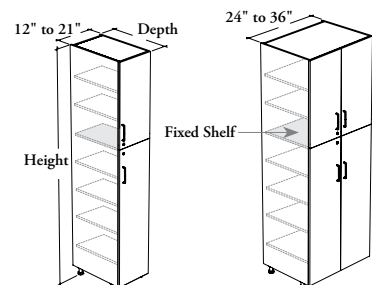


storage cabinets

Xpress

CETT

Two-High Tall Cabinet – Doors



WHAT'S INCLUDED

1 tall cabinet, adjustable feet, clips for toe kick – front, pulls (as specified), locks and keys (as specified), mounting hardware, 1 fixed shelf and adjustable shelves as listed below:

	84" h	90" to 96" h (Shown)
Adjustable Shelves	5	6

WHAT'S EXCLUDED

Toe Kick – Front (CEATF) and Toe Kick – Side (CEATS).

NOTES

The upper section Hinge Style is Standard – Soft Close.

When Flintwood Front Finish is specified, only Not Applicable (NA) Edge Trim Finish is available.

When Stainless (8) or Drilled On-Site – No Pull (Z) Pull Style is specified, Pull Finish is **not** available.

Shelves are 24" deep for all cabinet depths.

Holes at 1 1/4" intervals allow for shelf adjustment.

Additional Shelves for Cabinet (CEACS) are available and must be specified separately.

Xpress See *Xpress Program* and/or specification software for finishes availability.

PRODUCT OPTIONS

Depth	Width	Height	Door Swing Direction	Hinge Style – Bottom Section	Front Finish
24, 29	12, 15, 18, 21, 24, 27, 30, 33, 36	84, 90, 96	L Door Swing – Left R Door Swing – Right (Shown) N Not Applicable	S Standard – Soft Close F Full Extension – Soft Close	Source Laminate Foundation Laminate Grade 2 Laminate Flintwood (No Cathedral)

SAMPLE ORDER CODE

CETT 24	15	84	L	F	3F
----------------	-----------	-----------	----------	----------	-----------

PRODUCT OPTIONS CONTINUED

Edge Trim Finish	Case Finish	Pull Style		Pull Finish (If Applicable)	Key Style
Edge Trim Colors NA Not Applicable	Source Laminate Flintwood (No Cathedral)	1 Standard Expansion 8 Stainless (ADA) 9 Rectangular	M Modern Straight (ADA) S Slim (Shown) Z Drilled On-Site – No Pull	Foundation Accent Mica	K Keyed Alike R Keyed Randomly N No Lock

SAMPLE ORDER CODE CONTINUED

4F	3F	S	52	R
-----------	-----------	----------	-----------	----------

See Pricing on the following page.

C E T T

Two-High Tall Cabinet – Doors
(Continued)

DIMENSIONS
INCHES / MM

PRICING

DIMENSIONS			PRICING							
			LEFT (L) OR RIGHT (R) DOOR SWING							
			STANDARD – SOFT CLOSE HINGE (S)							
			SOURCE LAMINATE FRONT		FOUNDATION LAMINATE FRONT		GRADE 2 LAMINATE FRONT		FLINTWOOD FRONT	
			CASE FINISH							
D	W	H	Source Laminate	Source Laminate	Source Laminate	Flintwood	Source Laminate	Flintwood		
24 / 610	12 / 305	84 / 2134	1544	1721	1903	4656	1798	4551		
24 / 610	15 / 381	84 / 2134	1652	1873	2100	4978	1950	4828		
24 / 610	18 / 457	84 / 2134	1760	2025	2298	5300	2105	5107		
24 / 610	21 / 533	84 / 2134	1868	2177	2495	5621	2258	5384		
24 / 610	12 / 305	90 / 2286	1628	1818	2014	4947	1897	4830		
24 / 610	15 / 381	90 / 2286	1744	1981	2226	5299	2064	5137		
24 / 610	18 / 457	90 / 2286	1860	2144	2438	5649	2233	5444		
24 / 610	21 / 533	90 / 2286	1976	2308	2650	6000	2401	5751		
24 / 610	12 / 305	96 / 2438	1672	1875	2084	5076	1958	4950		
24 / 610	15 / 381	96 / 2438	1792	2046	2307	5440	2135	5268		
24 / 610	18 / 457	96 / 2438	1913	2217	2531	5803	2314	5586		
24 / 610	21 / 533	96 / 2438	2034	2389	2755	6167	2493	5905		
29 / 737	12 / 305	84 / 2134	1691	1868	2050	5357	1945	5252		
29 / 737	15 / 381	84 / 2134	1812	2033	2260	5755	2110	5605		
29 / 737	18 / 457	84 / 2134	1931	2196	2469	6153	2276	5960		
29 / 737	21 / 533	84 / 2134	2052	2361	2679	6551	2442	6314		
29 / 737	12 / 305	90 / 2286	1776	1966	2162	5675	2045	5558		
29 / 737	15 / 381	90 / 2286	1905	2142	2387	6107	2225	5945		
29 / 737	18 / 457	90 / 2286	2033	2317	2611	6540	2406	6335		
29 / 737	21 / 533	90 / 2286	2162	2494	2836	6972	2587	6723		
29 / 737	12 / 305	96 / 2438	1822	2025	2234	5830	2108	5704		
29 / 737	15 / 381	96 / 2438	1973	2227	2488	6280	2316	6108		
29 / 737	18 / 457	96 / 2438	2122	2426	2740	6729	2523	6512		
29 / 737	21 / 533	96 / 2438	2274	2629	2995	7179	2733	6917		
			NOT APPLICABLE DOOR SWING (N)							
24 / 610	24 / 610	84 / 2134	2155	2508	2872	6127	2717	5972		
24 / 610	27 / 686	84 / 2134	2262	2659	3069	6456	2871	6258		
24 / 610	30 / 762	84 / 2134	2366	2807	3262	6786	3021	6545		
24 / 610	33 / 838	84 / 2134	2473	2958	3459	7117	3174	6832		
24 / 610	36 / 914	84 / 2134	2580	3109	3655	7441	3327	7113		
24 / 610	24 / 610	90 / 2286	2269	2648	3040	6532	2865	6357		
24 / 610	27 / 686	90 / 2286	2386	2812	3253	6894	3033	6674		
24 / 610	30 / 762	90 / 2286	2497	2971	3460	7256	3197	6993		
24 / 610	33 / 838	90 / 2286	2613	3134	3673	7619	3364	7310		
24 / 610	36 / 914	90 / 2286	2729	3297	3885	7974	3532	7621		
24 / 610	24 / 610	96 / 2438	2329	2735	3153	6707	2958	6512		
24 / 610	27 / 686	96 / 2438	2453	2909	3380	7081	3139	6840		
24 / 610	30 / 762	96 / 2438	2571	3078	3601	7457	3315	7171		
24 / 610	33 / 838	96 / 2438	2695	3252	3828	7832	3496	7500		
24 / 610	36 / 914	96 / 2438	2819	3427	4055	8202	3677	7824		

Pricing is continued on the following page.

storage cabinets

Xpress

C E T T

Two-High Tall Cabinet – Doors (Continued)

DIMENSIONS
INCHES / MM

PRICING

			NOT APPLICABLE DOOR SWING (N)					
			STANDARD – SOFT CLOSE HINGE (S)					
			SOURCE LAMINATE FRONT	FOUNDATION LAMINATE FRONT	GRADE 2 LAMINATE FRONT	FLINTWOOD FRONT		
CASE FINISH			Source Laminate	Source Laminate	Source Laminate	Flintwood		
D	W	H						
29 / 737	24 / 610	84 / 2134	2377	2730	3094	7158	2939	7003
29 / 737	27 / 686	84 / 2134	2516	2913	3323	7578	3125	7380
29 / 737	30 / 762	84 / 2134	2650	3091	3546	7995	3305	7754
29 / 737	33 / 838	84 / 2134	2790	3275	3776	8416	3491	8131
29 / 737	36 / 914	84 / 2134	2929	3458	4004	8829	3676	8501
29 / 737	24 / 610	90 / 2286	2492	2871	3263	7610	3088	7435
29 / 737	27 / 686	90 / 2286	2642	3068	3509	8067	3289	7847
29 / 737	30 / 762	90 / 2286	2783	3257	3746	8522	3483	8259
29 / 737	33 / 838	90 / 2286	2932	3453	3992	8980	3683	8671
29 / 737	36 / 914	90 / 2286	3080	3648	4236	9429	3883	9076
29 / 737	24 / 610	96 / 2438	2586	2992	3410	7831	3215	7636
29 / 737	27 / 686	96 / 2438	2753	3209	3680	8306	3439	8065
29 / 737	30 / 762	96 / 2438	2912	3419	3942	8779	3656	8493
29 / 737	33 / 838	96 / 2438	3078	3635	4211	9255	3879	8923
29 / 737	36 / 914	96 / 2438	3244	3852	4480	9722	4102	9344

			LEFT (L) OR RIGHT (R) DOOR SWING					
			FULL EXTENSION – SOFT CLOSE HINGE (F)					
			SOURCE LAMINATE FRONT	FOUNDATION LAMINATE FRONT	GRADE 2 LAMINATE FRONT	FLINTWOOD FRONT		
CASE FINISH			Source Laminate	Source Laminate	Source Laminate	Flintwood		
D	W	H						
24 / 610	12 / 305	84 / 2134	1598	1775	1957	4710	1852	4605
24 / 610	15 / 381	84 / 2134	1706	1927	2154	5032	2004	4882
24 / 610	18 / 457	84 / 2134	1814	2079	2352	5354	2159	5161
24 / 610	21 / 533	84 / 2134	1922	2231	2549	5675	2312	5438
24 / 610	12 / 305	90 / 2286	1682	1872	2068	5001	1951	4884
24 / 610	15 / 381	90 / 2286	1798	2035	2280	5353	2118	5191
24 / 610	18 / 457	90 / 2286	1914	2198	2492	5703	2287	5498
24 / 610	21 / 533	90 / 2286	2030	2362	2704	6054	2455	5805
24 / 610	12 / 305	96 / 2438	1726	1929	2138	5130	2012	5004
24 / 610	15 / 381	96 / 2438	1846	2100	2361	5494	2189	5322
24 / 610	18 / 457	96 / 2438	1967	2271	2585	5857	2368	5640
24 / 610	21 / 533	96 / 2438	2088	2443	2809	6221	2547	5959
29 / 737	12 / 305	84 / 2134	1745	1922	2104	5411	1999	5306
29 / 737	15 / 381	84 / 2134	1866	2087	2314	5809	2164	5659
29 / 737	18 / 457	84 / 2134	1985	2250	2523	6207	2330	6014
29 / 737	21 / 533	84 / 2134	2106	2415	2733	6605	2496	6368

Pricing is continued on the following page.

C E T T

Two-High Tall Cabinet – Doors
(Continued)

DIMENSIONS
INCHES / MM

D	W	H
29 / 737	12 / 305	90 / 2286
29 / 737	15 / 381	90 / 2286
29 / 737	18 / 457	90 / 2286
29 / 737	21 / 533	90 / 2286
29 / 737	12 / 305	96 / 2438
29 / 737	15 / 381	96 / 2438
29 / 737	18 / 457	96 / 2438
29 / 737	21 / 533	96 / 2438
24 / 610	24 / 610	84 / 2134
24 / 610	27 / 686	84 / 2134
24 / 610	30 / 762	84 / 2134
24 / 610	33 / 838	84 / 2134
24 / 610	36 / 914	84 / 2134
24 / 610	24 / 610	90 / 2286
24 / 610	27 / 686	90 / 2286
24 / 610	30 / 762	90 / 2286
24 / 610	33 / 838	90 / 2286
24 / 610	36 / 914	90 / 2286
24 / 610	24 / 610	96 / 2438
24 / 610	27 / 686	96 / 2438
24 / 610	30 / 762	96 / 2438
24 / 610	33 / 838	96 / 2438
24 / 610	36 / 914	96 / 2438
29 / 737	24 / 610	84 / 2134
29 / 737	27 / 686	84 / 2134
29 / 737	30 / 762	84 / 2134
29 / 737	33 / 838	84 / 2134
29 / 737	36 / 914	84 / 2134
29 / 737	24 / 610	90 / 2286
29 / 737	27 / 686	90 / 2286
29 / 737	30 / 762	90 / 2286
29 / 737	33 / 838	90 / 2286
29 / 737	36 / 914	90 / 2286
29 / 737	24 / 610	96 / 2438
29 / 737	27 / 686	96 / 2438
29 / 737	30 / 762	96 / 2438
29 / 737	33 / 838	96 / 2438
29 / 737	36 / 914	96 / 2438

PRICING

LEFT (L) OR RIGHT (R) DOOR SWING							
FULL EXTENSION – SOFT CLOSE HINGE (F)							
SOURCE LAMINATE FRONT		FOUNDATION LAMINATE FRONT		GRADE 2 LAMINATE FRONT		FLINTWOOD FRONT	
CASE FINISH							
Source Laminate		Source Laminate		Source Laminate		Flintwood	
1830	2020	2216	5729	2099	5612		
1959	2196	2441	6161	2279	5999		
2087	2371	2665	6594	2460	6389		
2216	2548	2890	7026	2641	6777		
1876	2079	2288	5884	2162	5758		
2027	2281	2542	6334	2370	6162		
2176	2480	2794	6783	2577	6566		
2328	2683	3049	7233	2787	6971		
NOT APPLICABLE DOOR SWING (N)							
2262	2615	2979	6234	2824	6079		
2369	2766	3176	6563	2978	6365		
2473	2914	3369	6893	3128	6652		
2580	3065	3566	7224	3281	6939		
2687	3216	3762	7548	3434	7220		
2376	2755	3147	6639	2972	6464		
2493	2919	3360	7001	3140	6781		
2604	3078	3567	7363	3304	7100		
2720	3241	3780	7726	3471	7417		
2836	3404	3992	8081	3639	7728		
2436	2842	3260	6814	3065	6619		
2560	3016	3487	7188	3246	6947		
2678	3185	3708	7564	3422	7278		
2802	3359	3935	7939	3603	7607		
2926	3534	4162	8309	3784	7931		
2484	2837	3201	7265	3046	7110		
2623	3020	3430	7685	3232	7487		
2757	3198	3653	8102	3412	7861		
2897	3382	3883	8523	3598	8238		
3036	3565	4111	8936	3783	8608		
2599	2978	3370	7717	3195	7542		
2749	3175	3616	8174	3396	7954		
2890	3364	3853	8629	3590	8366		
3039	3560	4099	9087	3790	8778		
3187	3755	4343	9536	3990	9183		
2693	3099	3517	7938	3322	7743		
2860	3316	3787	8413	3546	8172		
3019	3526	4049	8886	3763	8600		
3185	3742	4318	9362	3986	9030		
3351	3959	4587	9829	4209	9451		