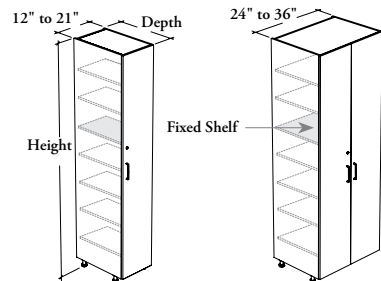


storage cabinets

Xpress

CETS

Tall Cabinet – Door(s)



WHAT'S INCLUDED

1 tall cabinet, adjustable feet, clips for toe kick – front, pull(s) (as specified), locks and keys (as specified), mounting hardware, 1 fixed shelf, and adjustable shelves as listed below:

	72" to 84" h	90" to 96" h (Shown)
Adjustable Shelves	5	6

WHAT'S EXCLUDED

Toe Kick – Front (CEATF) and Toe Kick – Side (CEATS).

NOTES

When Flintwood Front Finish is specified, only Not Applicable (NA) Edge Trim Finish is available.

When Stainless (8) or Drilled On-Site – No Pull (Z) Pull Style is specified, Pull Finish is **not** available.

Shelves are 24" deep for all cabinet depths.

Holes at 1 1/4" intervals allow for shelf adjustment.

Additional Shelves for Cabinet (CEACS) are available and must be specified separately.

Xpress See *Xpress Program* and/or specification software for finishes availability.

PRODUCT OPTIONS

Depth	Width	Height	Door Swing Direction	Hinge Style	Front Finish
24, 29	12, 15, 18, 21, 24, 27, 30, 33, 36	72, 84, 90, 96	L Door Swing – Left R Door Swing – Right (Shown) N Not Applicable	S Standard – Soft Close F Full Extension – Soft Close	Source Laminate Foundation Laminate Grade 2 Laminate Flintwood (No Cathedral)

SAMPLE ORDER CODE

CETS 24	24	72	N	F	3F
----------------	-----------	-----------	----------	----------	-----------

PRODUCT OPTIONS CONTINUED

Edge Trim Finish	Case Finish	Pull Style		Pull Finish (If Applicable)	Key Style
Edge Trim Colors NA Not Applicable	Source Laminate Flintwood (No Cathedral)	1 Standard Expansion 8 Stainless (ADA) 9 Rectangular	M Modern Straight (ADA) S Slim (Shown) Z Drilled On-Site – No Pull	Foundation Accent Mica	K Keyed Alike R Keyed Randomly N No Lock

SAMPLE ORDER CODE CONTINUED

4F	3F	Z	R
-----------	-----------	----------	----------

See Pricing on the following page.

CETS

Tall Cabinet – Door(s) (Continued)

DIMENSIONS
INCHES / MM

PRICING

DIMENSIONS			PRICING							
			LEFT (L) OR RIGHT (R) DOOR SWING							
			STANDARD – SOFT CLOSE HINGE (S)							
			SOURCE LAMINATE FRONT		FOUNDATION LAMINATE FRONT		GRADE 2 LAMINATE FRONT		FLINTWOOD FRONT	
			CASE FINISH							
D	W	H	Source Laminate	Source Laminate	Source Laminate	Flintwood	Source Laminate	Flintwood		
24 / 610	12 / 305	72 / 1829	1370	1529	1693	4327	1553	4187		
24 / 610	15 / 381	72 / 1829	1472	1671	1876	4628	1694	4446		
24 / 610	18 / 457	72 / 1829	1574	1812	2058	4927	1836	4705		
24 / 610	21 / 533	72 / 1829	1677	1955	2242	5228	1978	4964		
24 / 610	12 / 305	84 / 2134	1456	1641	1833	4586	1681	4434		
24 / 610	15 / 381	84 / 2134	1557	1789	2028	4906	1832	4710		
24 / 610	18 / 457	84 / 2134	1660	1938	2225	5227	1984	4986		
24 / 610	21 / 533	84 / 2134	1762	2086	2421	5547	2135	5261		
24 / 610	12 / 305	90 / 2286	1538	1737	1942	4875	1784	4717		
24 / 610	15 / 381	90 / 2286	1646	1894	2150	5223	1947	5020		
24 / 610	18 / 457	90 / 2286	1755	2053	2360	5571	2111	5322		
24 / 610	21 / 533	90 / 2286	1865	2212	2571	5921	2274	5624		
24 / 610	12 / 305	96 / 2438	1580	1792	2010	5002	1849	4841		
24 / 610	15 / 381	96 / 2438	1703	1968	2241	5374	2019	5152		
24 / 610	18 / 457	96 / 2438	1827	2144	2472	5744	2190	5462		
24 / 610	21 / 533	96 / 2438	1951	2321	2704	6116	2362	5774		
29 / 737	12 / 305	72 / 1829	1513	1672	1836	4976	1696	4836		
29 / 737	15 / 381	72 / 1829	1628	1827	2032	5343	1850	5161		
29 / 737	18 / 457	72 / 1829	1741	1979	2225	5706	2003	5484		
29 / 737	21 / 533	72 / 1829	1857	2135	2422	6074	2158	5810		
29 / 737	12 / 305	84 / 2134	1603	1788	1980	5287	1828	5135		
29 / 737	15 / 381	84 / 2134	1717	1949	2188	5683	1992	5487		
29 / 737	18 / 457	84 / 2134	1831	2109	2396	6080	2155	5839		
29 / 737	21 / 533	84 / 2134	1946	2270	2605	6477	2319	6191		
29 / 737	12 / 305	90 / 2286	1686	1885	2090	5603	1932	5445		
29 / 737	15 / 381	90 / 2286	1807	2055	2311	6031	2108	5828		
29 / 737	18 / 457	90 / 2286	1928	2226	2533	6462	2284	6213		
29 / 737	21 / 533	90 / 2286	2051	2398	2757	6893	2460	6596		
29 / 737	12 / 305	96 / 2438	1730	1942	2160	5756	1999	5595		
29 / 737	15 / 381	96 / 2438	1884	2149	2422	6214	2200	5992		
29 / 737	18 / 457	96 / 2438	2036	2353	2681	6670	2399	6388		
29 / 737	21 / 533	96 / 2438	2191	2561	2944	7128	2602	6786		

Pricing is continued on the following page.

storage cabinets

Xpress

C E T S

Tall Cabinet – Door(s) (Continued)

DIMENSIONS
INCHES / MM

PRICING

DIMENSIONS			PRICING					
INCHES / MM			NOT APPLICABLE DOOR SWING (N)					
			STANDARD – SOFT CLOSE HINGE (S)					
			SOURCE LAMINATE FRONT	FOUNDATION LAMINATE FRONT	GRADE 2 LAMINATE FRONT	FLINTWOOD FRONT		
CASE FINISH								
D	W	H	Source Laminate	Source Laminate	Source Laminate	Flintwood	Source Laminate	Flintwood
24 / 610	24 / 610	72 / 1829	1866	2183	2511	5617	2273	5379
24 / 610	27 / 686	72 / 1829	1969	2326	2695	5925	2416	5646
24 / 610	30 / 762	72 / 1829	2068	2465	2875	6233	2556	5914
24 / 610	33 / 838	72 / 1829	2170	2606	3057	6540	2699	6182
24 / 610	36 / 914	72 / 1829	2273	2749	3241	6843	2843	6445
24 / 610	24 / 610	84 / 2134	1952	2322	2705	5960	2449	5704
24 / 610	27 / 686	84 / 2134	2055	2472	2902	6289	2599	5986
24 / 610	30 / 762	84 / 2134	2154	2617	3095	6619	2746	6270
24 / 610	33 / 838	84 / 2134	2256	2765	3291	6949	2895	6553
24 / 610	36 / 914	84 / 2134	2359	2914	3488	7274	3045	6831
24 / 610	24 / 610	90 / 2286	2061	2458	2868	6360	2604	6096
24 / 610	27 / 686	90 / 2286	2171	2617	3078	6719	2765	6406
24 / 610	30 / 762	90 / 2286	2276	2772	3284	7080	2921	6717
24 / 610	33 / 838	90 / 2286	2385	2930	3494	7440	3080	7026
24 / 610	36 / 914	90 / 2286	2495	3090	3705	7794	3241	7330
24 / 610	24 / 610	96 / 2438	2159	2582	3019	6573	2705	6259
24 / 610	27 / 686	96 / 2438	2280	2756	3248	6949	2875	6576
24 / 610	30 / 762	96 / 2438	2395	2924	3470	7326	3038	6894
24 / 610	33 / 838	96 / 2438	2515	3097	3698	7702	3207	7211
24 / 610	36 / 914	96 / 2438	2636	3270	3926	8073	3377	7524
29 / 737	24 / 610	72 / 1829	2084	2401	2729	6557	2491	6319
29 / 737	27 / 686	72 / 1829	2220	2577	2946	6944	2667	6665
29 / 737	30 / 762	72 / 1829	2348	2745	3155	7330	2836	7011
29 / 737	33 / 838	72 / 1829	2483	2919	3370	7715	3012	7357
29 / 737	36 / 914	72 / 1829	2619	3095	3587	8096	3189	7698
29 / 737	24 / 610	84 / 2134	2174	2544	2927	6991	2671	6735
29 / 737	27 / 686	84 / 2134	2309	2726	3156	7411	2853	7108
29 / 737	30 / 762	84 / 2134	2438	2901	3379	7828	3030	7479
29 / 737	33 / 838	84 / 2134	2573	3082	3608	8248	3212	7852
29 / 737	36 / 914	84 / 2134	2708	3263	3837	8662	3394	8219
29 / 737	24 / 610	90 / 2286	2284	2681	3091	7438	2827	7174
29 / 737	27 / 686	90 / 2286	2427	2873	3334	7892	3021	7579
29 / 737	30 / 762	90 / 2286	2562	3058	3570	8346	3207	7983
29 / 737	33 / 838	90 / 2286	2704	3249	3813	8801	3399	8387
29 / 737	36 / 914	90 / 2286	2846	3441	4056	9249	3592	8785
29 / 737	24 / 610	96 / 2438	2416	2839	3276	7697	2962	7383
29 / 737	27 / 686	96 / 2438	2580	3056	3548	8174	3175	7801
29 / 737	30 / 762	96 / 2438	2736	3265	3811	8648	3379	8216
29 / 737	33 / 838	96 / 2438	2898	3480	4081	9125	3590	8634
29 / 737	36 / 914	96 / 2438	3061	3695	4351	9593	3802	9044

Pricing is continued on the following page.

Tall Cabinet – Door(s) (Continued)

DIMENSIONS
INCHES / MM

PRICING

DIMENSIONS			PRICING							
			LEFT (L) OR RIGHT (R) DOOR SWING							
			FULL EXTENSION – SOFT CLOSE HINGE (F)							
			SOURCE LAMINATE FRONT		FOUNDATION LAMINATE FRONT		GRADE 2 LAMINATE FRONT		FLINTWOOD FRONT	
			CASE FINISH							
D	W	H	Source Laminate	Source Laminate	Source Laminate	Flintwood	Source Laminate	Flintwood		
24 / 610	12 / 305	72 / 1829	1424	1583	1747	4381	1607	4241		
24 / 610	15 / 381	72 / 1829	1526	1725	1930	4682	1748	4500		
24 / 610	18 / 457	72 / 1829	1628	1866	2112	4981	1890	4759		
24 / 610	21 / 533	72 / 1829	1731	2009	2296	5282	2032	5018		
24 / 610	12 / 305	84 / 2134	1510	1695	1887	4640	1735	4488		
24 / 610	15 / 381	84 / 2134	1611	1843	2082	4960	1886	4764		
24 / 610	18 / 457	84 / 2134	1714	1992	2279	5281	2038	5040		
24 / 610	21 / 533	84 / 2134	1816	2140	2475	5601	2189	5315		
24 / 610	12 / 305	90 / 2286	1592	1791	1996	4929	1838	4771		
24 / 610	15 / 381	90 / 2286	1700	1948	2204	5277	2001	5074		
24 / 610	18 / 457	90 / 2286	1809	2107	2414	5625	2165	5376		
24 / 610	21 / 533	90 / 2286	1919	2266	2625	5975	2328	5678		
24 / 610	12 / 305	96 / 2438	1634	1846	2064	5056	1903	4895		
24 / 610	15 / 381	96 / 2438	1757	2022	2295	5428	2073	5206		
24 / 610	18 / 457	96 / 2438	1881	2198	2526	5798	2244	5516		
24 / 610	21 / 533	96 / 2438	2005	2375	2758	6170	2416	5828		
29 / 737	12 / 305	72 / 1829	1567	1726	1890	5030	1750	4890		
29 / 737	15 / 381	72 / 1829	1682	1881	2086	5397	1904	5215		
29 / 737	18 / 457	72 / 1829	1795	2033	2279	5760	2057	5538		
29 / 737	21 / 533	72 / 1829	1911	2189	2476	6128	2212	5864		
29 / 737	12 / 305	84 / 2134	1657	1842	2034	5341	1882	5189		
29 / 737	15 / 381	84 / 2134	1771	2003	2242	5737	2046	5541		
29 / 737	18 / 457	84 / 2134	1885	2163	2450	6134	2209	5893		
29 / 737	21 / 533	84 / 2134	2000	2324	2659	6531	2373	6245		
29 / 737	12 / 305	90 / 2286	1740	1939	2144	5657	1986	5499		
29 / 737	15 / 381	90 / 2286	1861	2109	2365	6085	2162	5882		
29 / 737	18 / 457	90 / 2286	1982	2280	2587	6516	2338	6267		
29 / 737	21 / 533	90 / 2286	2105	2452	2811	6947	2514	6650		
29 / 737	12 / 305	96 / 2438	1784	1996	2214	5810	2053	5649		
29 / 737	15 / 381	96 / 2438	1938	2203	2476	6268	2254	6046		
29 / 737	18 / 457	96 / 2438	2090	2407	2735	6724	2453	6442		
29 / 737	21 / 533	96 / 2438	2245	2615	2998	7182	2656	6840		

Pricing is continued on the following page.

storage cabinets

Xpress

C E T S

Tall Cabinet – Door(s) (Continued)

DIMENSIONS
INCHES / MM

PRICING

DIMENSIONS			PRICING					
			NOT APPLICABLE DOOR SWING (N)					
			FULL EXTENSION – SOFT CLOSE HINGE (F)					
			SOURCE LAMINATE FRONT	FOUNDATION LAMINATE FRONT	GRADE 2 LAMINATE FRONT	FLINTWOOD FRONT		
CASE FINISH								
D	W	H	Source Laminate	Source Laminate	Source Laminate	Flintwood		
						Source Laminate	Flintwood	
24 / 610	24 / 610	72 / 1829	1973	2290	2618	5724	2380	5486
24 / 610	27 / 686	72 / 1829	2076	2433	2802	6032	2523	5753
24 / 610	30 / 762	72 / 1829	2175	2572	2982	6340	2663	6021
24 / 610	33 / 838	72 / 1829	2277	2713	3164	6647	2806	6289
24 / 610	36 / 914	72 / 1829	2380	2856	3348	6950	2950	6552
24 / 610	24 / 610	84 / 2134	2059	2429	2812	6067	2556	5811
24 / 610	27 / 686	84 / 2134	2162	2579	3009	6396	2706	6093
24 / 610	30 / 762	84 / 2134	2261	2724	3202	6726	2853	6377
24 / 610	33 / 838	84 / 2134	2363	2872	3398	7056	3002	6660
24 / 610	36 / 914	84 / 2134	2466	3021	3595	7381	3152	6938
24 / 610	24 / 610	90 / 2286	2168	2565	2975	6467	2711	6203
24 / 610	27 / 686	90 / 2286	2278	2724	3185	6826	2872	6513
24 / 610	30 / 762	90 / 2286	2383	2879	3391	7187	3028	6824
24 / 610	33 / 838	90 / 2286	2492	3037	3601	7547	3187	7133
24 / 610	36 / 914	90 / 2286	2602	3197	3812	7901	3348	7437
24 / 610	24 / 610	96 / 2438	2266	2689	3126	6680	2812	6366
24 / 610	27 / 686	96 / 2438	2387	2863	3355	7056	2982	6683
24 / 610	30 / 762	96 / 2438	2502	3031	3577	7433	3145	7001
24 / 610	33 / 838	96 / 2438	2622	3204	3805	7809	3314	7318
24 / 610	36 / 914	96 / 2438	2743	3377	4033	8180	3484	7631
29 / 737	24 / 610	72 / 1829	2191	2508	2836	6664	2598	6426
29 / 737	27 / 686	72 / 1829	2327	2684	3053	7051	2774	6772
29 / 737	30 / 762	72 / 1829	2455	2852	3262	7437	2943	7118
29 / 737	33 / 838	72 / 1829	2590	3026	3477	7822	3119	7464
29 / 737	36 / 914	72 / 1829	2726	3202	3694	8203	3296	7805
29 / 737	24 / 610	84 / 2134	2281	2651	3034	7098	2778	6842
29 / 737	27 / 686	84 / 2134	2416	2833	3263	7518	2960	7215
29 / 737	30 / 762	84 / 2134	2545	3008	3486	7935	3137	7586
29 / 737	33 / 838	84 / 2134	2680	3189	3715	8355	3319	7959
29 / 737	36 / 914	84 / 2134	2815	3370	3944	8769	3501	8326
29 / 737	24 / 610	90 / 2286	2391	2788	3198	7545	2934	7281
29 / 737	27 / 686	90 / 2286	2534	2980	3441	7999	3128	7686
29 / 737	30 / 762	90 / 2286	2669	3165	3677	8453	3314	8090
29 / 737	33 / 838	90 / 2286	2811	3356	3920	8908	3506	8494
29 / 737	36 / 914	90 / 2286	2953	3548	4163	9356	3699	8892
29 / 737	24 / 610	96 / 2438	2523	2946	3383	7804	3069	7490
29 / 737	27 / 686	96 / 2438	2687	3163	3655	8281	3282	7908
29 / 737	30 / 762	96 / 2438	2843	3372	3918	8755	3486	8323
29 / 737	33 / 838	96 / 2438	3005	3587	4188	9232	3697	8741
29 / 737	36 / 914	96 / 2438	3168	3802	4458	9700	3909	9151

