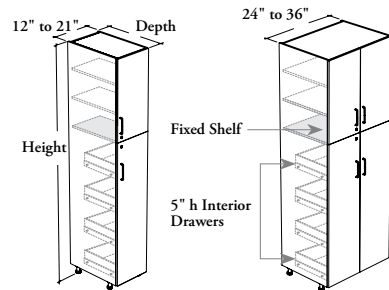


storage cabinets

Xpress

CETD

Two-High Tall Cabinet – Doors with Interior Drawers



WHAT'S INCLUDED

1 tall cabinet, adjustable feet, clips for toe kick – front, 4 interior drawers, pulls (as specified), locks and keys (as specified), mounting hardware, and adjustable shelve(s) as listed below:

	84" or 90" h	96" h (Shown)
Adjustable Shelves	1	2

WHAT'S EXCLUDED

Toe Kick – Front (CEATF), Toe Kick – Side (CEATS).

NOTES

The upper section Hinge Style is Standard – Soft Close.

Standard – Soft Close (S) Drawer Style features a 16" deep white drawer body.

Undermount – Soft Close (U) Drawer Style features a 20" deep white drawer body.

When Flintwood Front Finish is specified, only Not Applicable (NA) Edge Trim Finish is available.

When Stainless (8) or Drilled On-Site – No Pull (Z) Pull Style is specified, Pull Finish is **not** available.

Shelves are 24" deep for all cabinet depths.

Holes at 1 1/4" intervals allow for shelf adjustment.

Additional Shelves for Cabinet (CEACS) are available and must be specified separately.

Xpress See *Xpress Program* and/or specification software for finishes availability.

PRODUCT OPTIONS

Depth	Width	Height	Door Swing Direction	Hinge Style – Bottom Section	Interior Drawer Style
24, 29	12, 15, 18, 21, 24, 27, 30, 33, 36	84, 90, 96	L Door Swing – Left R Door Swing – Right (Shown) N Not Applicable	F Full Extension – Soft Close	S Standard – Soft Close U Undermount – Soft Close

SAMPLE ORDER CODE

CETD 24	24	90	N	F	S
----------------	-----------	-----------	----------	----------	----------

PRODUCT OPTIONS CONTINUED

Front Finish	Edge Trim Finish	Case Finish	Pull Style		Pull Finish (If Applicable)	Key Style
Source Laminate	Edge Trim Colors	Source Laminate	1 Standard Expansion	M Modern Straight (ADA)	Foundation	K Keyed Alike
Foundation Laminate	NA Not Applicable		8 Stainless (ADA)	S Slim (Shown)	Accent	R Keyed Randomly
Grade 2 Laminate			9 Rectangular	Z Drilled On-Site – No Pull	Mica	N No Lock
Flintwood (No Cathedral)						

SAMPLE ORDER CODE CONTINUED

3F	4F	3F	S	52	R
-----------	-----------	-----------	----------	-----------	----------

See Pricing on the following page.

C E T D

Two-High Tall Cabinet – Doors with Interior Drawers (Continued)

DIMENSIONS
INCHES / MM

D	W	H
24 / 610	12 / 305	84 / 2134
24 / 610	15 / 381	84 / 2134
24 / 610	18 / 457	84 / 2134
24 / 610	21 / 533	84 / 2134
24 / 610	12 / 305	90 / 2286
24 / 610	15 / 381	90 / 2286
24 / 610	18 / 457	90 / 2286
24 / 610	21 / 533	90 / 2286
24 / 610	12 / 305	96 / 2438
24 / 610	15 / 381	96 / 2438
24 / 610	18 / 457	96 / 2438
24 / 610	21 / 533	96 / 2438
29 / 737	12 / 305	84 / 2134
29 / 737	15 / 381	84 / 2134
29 / 737	18 / 457	84 / 2134
29 / 737	21 / 533	84 / 2134
29 / 737	12 / 305	90 / 2286
29 / 737	15 / 381	90 / 2286
29 / 737	18 / 457	90 / 2286
29 / 737	21 / 533	90 / 2286
29 / 737	12 / 305	96 / 2438
29 / 737	15 / 381	96 / 2438
29 / 737	18 / 457	96 / 2438
29 / 737	21 / 533	96 / 2438
24 / 610	24 / 610	84 / 2134
24 / 610	27 / 686	84 / 2134
24 / 610	30 / 762	84 / 2134
24 / 610	33 / 838	84 / 2134
24 / 610	36 / 914	84 / 2134
24 / 610	24 / 610	90 / 2286
24 / 610	27 / 686	90 / 2286
24 / 610	30 / 762	90 / 2286
24 / 610	33 / 838	90 / 2286
24 / 610	36 / 914	90 / 2286
24 / 610	24 / 610	96 / 2438
24 / 610	27 / 686	96 / 2438
24 / 610	30 / 762	96 / 2438
24 / 610	33 / 838	96 / 2438
24 / 610	36 / 914	96 / 2438

PRICING

LEFT (L) OR RIGHT (R) DOOR SWING							
STANDARD – SOFT CLOSE INTERIOR DRAWER (S)				UNDERMOUNT – SOFT CLOSE INTERIOR DRAWER (U)			
FRONT FINISH							
Source Laminate	Foundation Laminate	Grade 2 Laminate	Flintwood	Source Laminate	Foundation Laminate	Grade 2 Laminate	Flintwood
2078	2255	2437	2332	2448	2625	2807	2702
2166	2387	2614	2464	2536	2757	2984	2834
2255	2520	2793	2600	2625	2890	3163	2970
2343	2652	2970	2733	2713	3022	3340	3103
2162	2352	2548	2431	2532	2722	2918	2801
2258	2495	2740	2578	2628	2865	3110	2948
2355	2639	2933	2728	2725	3009	3303	3098
2451	2783	3125	2876	2821	3153	3495	3246
2206	2409	2618	2492	2576	2779	2988	2862
2306	2560	2821	2649	2676	2930	3191	3019
2408	2712	3026	2809	2778	3082	3396	3179
2509	2864	3230	2968	2879	3234	3600	3338
2225	2402	2584	2479	2595	2772	2954	2849
2326	2547	2774	2624	2696	2917	3144	2994
2426	2691	2964	2771	2796	3061	3334	3141
2527	2836	3154	2917	2897	3206	3524	3287
2310	2500	2696	2579	2680	2870	3066	2949
2419	2656	2901	2739	2789	3026	3271	3109
2528	2812	3106	2901	2898	3182	3476	3271
2637	2969	3311	3062	3007	3339	3681	3432
2356	2559	2768	2642	2726	2929	3138	3012
2487	2741	3002	2830	2857	3111	3372	3200
2617	2921	3235	3018	2987	3291	3605	3388
2749	3104	3470	3208	3119	3474	3840	3578
NOT APPLICABLE DOOR SWING (N)							
2722	3075	3439	3284	3092	3445	3809	3654
2813	3210	3620	3422	3183	3580	3990	3792
2906	3347	3802	3561	3276	3717	4172	3931
2997	3482	3983	3698	3367	3852	4353	4068
3088	3617	4163	3835	3458	3987	4533	4205
2836	3215	3607	3432	3206	3585	3977	3802
2937	3363	3804	3584	3307	3733	4174	3954
3037	3511	4000	3737	3407	3881	4370	4107
3137	3658	4197	3888	3507	4028	4567	4258
3237	3805	4393	4040	3607	4175	4763	4410
2896	3302	3720	3525	3266	3672	4090	3895
3004	3460	3931	3690	3374	3830	4301	4060
3111	3618	4141	3855	3481	3988	4511	4225
3219	3776	4352	4020	3589	4146	4722	4390
3327	3935	4563	4185	3697	4305	4933	4555

Pricing is continued on the following page.

storage cabinets

Xpress

C E T D

Two-High Tall Cabinet – Doors with Interior Drawers (Continued)

			NOT APPLICABLE DOOR SWING (N)							
			STANDARD – SOFT CLOSE INTERIOR DRAWER (S)				UNDERMOUNT – SOFT CLOSE INTERIOR DRAWER (U)			
			FRONT FINISH							
D	W	H	Source Laminate	Foundation Laminate	Grade 2 Laminate	Flintwood	Source Laminate	Foundation Laminate	Grade 2 Laminate	Flintwood
29 / 737	24 / 610	84 / 2134	2944	3297	3661	3506	3314	3667	4031	3876
29 / 737	27 / 686	84 / 2134	3067	3464	3874	3676	3437	3834	4244	4046
29 / 737	30 / 762	84 / 2134	3190	3631	4086	3845	3560	4001	4456	4215
29 / 737	33 / 838	84 / 2134	3314	3799	4300	4015	3684	4169	4670	4385
29 / 737	36 / 914	84 / 2134	3437	3966	4512	4184	3807	4336	4882	4554
29 / 737	24 / 610	90 / 2286	3059	3438	3830	3655	3429	3808	4200	4025
29 / 737	27 / 686	90 / 2286	3193	3619	4060	3840	3563	3989	4430	4210
29 / 737	30 / 762	90 / 2286	3323	3797	4286	4023	3693	4167	4656	4393
29 / 737	33 / 838	90 / 2286	3456	3977	4516	4207	3826	4347	4886	4577
29 / 737	36 / 914	90 / 2286	3588	4156	4744	4391	3958	4526	5114	4761
29 / 737	24 / 610	96 / 2438	3153	3559	3977	3782	3523	3929	4347	4152
29 / 737	27 / 686	96 / 2438	3304	3760	4231	3990	3674	4130	4601	4360
29 / 737	30 / 762	96 / 2438	3452	3959	4482	4196	3822	4329	4852	4566
29 / 737	33 / 838	96 / 2438	3602	4159	4735	4403	3972	4529	5105	4773
29 / 737	36 / 914	96 / 2438	3752	4360	4988	4610	4122	4730	5358	4980

