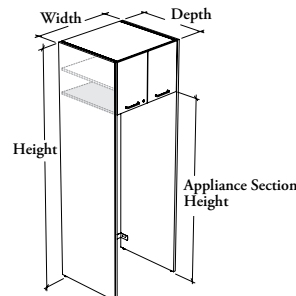


# storage cabinets

**Xpress**

## CEKO

### Cabinet Kit for One Appliance – Doors



#### WHAT'S INCLUDED

1 cabinet, 2 gables with levelers, pulls (as specified), locks and keys (as specified), wall-mounted rail, mounting hardware and adjustable shelf as listed below:

Adjustable Shelf	Appliance Section Height		
	69"	72"	75"
84" h	0	n/a	n/a
90" h	1	1	0
96" h (Shown)	1	1	1

#### NOTES

It is the specifier's responsibility to ensure that the appliance clearance complies with the manufacturer's recommendations.

When Flintwood Front Finish is specified, only Not Applicable (NA) Edge Trim Finish is available.

When Stainless (8), Finger Pull (X) or Drilled On-Site – No Pull (Z) Pull Style is specified, Pull Finish is **not** available.

Holes at 1 1/4" intervals allow for shelf adjustment.

Levelers are finished in Chrome.

Additional Shelves for Cabinet (CEACS) **cannot** be specified with this product

When Grade 2 Laminate is specified, the Accent colors are **not** available.

**Xpress** See *Xpress Program* and/or specification software for finishes availability.

#### PRODUCT OPTIONS

Depth	Width	Height	Appliance Section Height	Hinge Style	Front Finish
24, 25, 29, 30	28, 30, 32, 34, 36, 38, 40	84, 90, 96	69, 72, 75	<b>S</b> Standard – Soft Close	Source Laminate Foundation Laminate Grade 2 Laminate Flintwood (No Cathedral)

#### SAMPLE ORDER CODE

<b>CEKO 24</b>	<b>32</b>	<b>90</b>	<b>72</b>	<b>S</b>	<b>3F</b>
----------------	-----------	-----------	-----------	----------	-----------

#### PRODUCT OPTIONS CONTINUED

Edge Trim Finish	Case Finish	Gable Finish	Pull Style		Pull Finish (If Applicable)	Key Style
Edge Trim Colors <b>NA</b> Not Applicable	Source Laminate Flintwood (No Cathedral)	Source Laminate Grade 2 Laminate Flintwood (No Cathedral)	<b>1</b> Standard Expansion <b>8</b> Stainless (ADA) <b>9</b> Rectangular <b>E</b> Edge – Standard <b>F</b> Edge – Small	<b>M</b> Modern Straight (ADA) <b>S</b> Slim (Shown) <b>X</b> Finger Pull <b>Z</b> Drilled On-Site – No Pull	Foundation Accent Mica	<b>K</b> Keyed Alike <b>R</b> Keyed Randomly <b>N</b> No Lock

#### SAMPLE ORDER CODE CONTINUED

<b>4F</b>	<b>3F</b>	<b>3F</b>	<b>S</b>	<b>52</b>	<b>R</b>
-----------	-----------	-----------	----------	-----------	----------

See Pricing on the following page.

# C E K O

## Cabinet Kit for One Appliance – Doors (Continued)

**DIMENSIONS**  
INCHES / MM

D	W	H
24 / 610	28 / 711	84 / 2134
24 / 610	30 / 762	84 / 2134
24 / 610	32 / 813	84 / 2134
24 / 610	34 / 889	84 / 2134
24 / 610	36 / 914	84 / 2134
24 / 610	38 / 965	84 / 2134
24 / 610	40 / 1016	84 / 2134
24 / 610	28 / 711	90 / 2286
24 / 610	30 / 762	90 / 2286
24 / 610	32 / 813	90 / 2286
24 / 610	34 / 889	90 / 2286
24 / 610	36 / 914	90 / 2286
24 / 610	38 / 965	90 / 2286
24 / 610	40 / 1016	90 / 2286
24 / 610	28 / 711	96 / 2438
24 / 610	30 / 762	96 / 2438
24 / 610	32 / 813	96 / 2438
24 / 610	34 / 889	96 / 2438
24 / 610	36 / 914	96 / 2438
24 / 610	38 / 965	96 / 2438
24 / 610	40 / 1016	96 / 2438
25 / 635	28 / 711	84 / 2134
25 / 635	30 / 762	84 / 2134
25 / 635	32 / 813	84 / 2134
25 / 635	34 / 889	84 / 2134
25 / 635	36 / 914	84 / 2134
25 / 635	38 / 965	84 / 2134
25 / 635	40 / 1016	84 / 2134
25 / 635	28 / 711	90 / 2286
25 / 635	30 / 762	90 / 2286
25 / 635	32 / 813	90 / 2286
25 / 635	34 / 889	90 / 2286
25 / 635	36 / 914	90 / 2286
25 / 635	38 / 965	90 / 2286
25 / 635	40 / 1016	90 / 2286
25 / 635	28 / 711	96 / 2438
25 / 635	30 / 762	96 / 2438
25 / 635	32 / 813	96 / 2438
25 / 635	34 / 889	96 / 2438
25 / 635	36 / 914	96 / 2438
25 / 635	38 / 965	96 / 2438
25 / 635	40 / 1016	96 / 2438

**PRICING**

69" APPLIANCE SECTION HEIGHT					
SOURCE LAMINATE FRONT			FOUNDATION LAMINATE FRONT		
SOURCE LAMINATE CASE					
GABLE FINISH					
Source Laminate	Grade 2 Laminate	Flintwood	Source Laminate	Grade 2 Laminate	Flintwood
1475	2228	2900	1552	2305	2977
1495	2248	2920	1578	2331	3003
1516	2269	2941	1604	2357	3029
1536	2289	2961	1629	2382	3054
1556	2309	2981	1655	2408	3080
1577	2330	3002	1681	2434	3106
1597	2350	3022	1707	2460	3132
1653	2460	3155	1761	2568	3263
1687	2494	3189	1803	2610	3305
1720	2527	3222	1843	2650	3345
1756	2563	3258	1886	2693	3388
1790	2597	3292	1929	2736	3431
1825	2632	3327	1971	2778	3473
1860	2667	3362	2014	2821	3516
1768	2628	3355	1907	2767	3494
1804	2664	3391	1953	2813	3540
1838	2698	3425	1996	2856	3583
1874	2734	3461	2042	2902	3629
1910	2770	3497	2088	2948	3675
1945	2805	3532	2133	2993	3720
1980	2840	3567	2178	3038	3765
1475	2259	2900	1552	2336	2977
1495	2279	2920	1578	2362	3003
1516	2300	2941	1604	2388	3029
1536	2320	2961	1629	2413	3054
1556	2340	2981	1655	2439	3080
1577	2361	3002	1681	2465	3106
1597	2381	3022	1707	2491	3132
1653	2493	3155	1761	2601	3263
1687	2527	3189	1803	2643	3305
1720	2560	3222	1843	2683	3345
1756	2596	3258	1886	2726	3388
1790	2630	3292	1929	2769	3431
1825	2665	3327	1971	2811	3473
1860	2700	3362	2014	2854	3516
1768	2664	3355	1907	2803	3494
1804	2700	3391	1953	2849	3540
1838	2734	3425	1996	2892	3583
1874	2770	3461	2042	2938	3629
1910	2806	3497	2088	2984	3675
1945	2841	3532	2133	3029	3720
1980	2876	3567	2178	3074	3765

Pricing is continued on the following page.

# storage cabinets

Xpress

## CEKO

### Cabinet Kit for One Appliance – Doors (Continued)

DIMENSIONS  
INCHES / MM

PRICING

DIMENSIONS			69" APPLIANCE SECTION HEIGHT					
			SOURCE LAMINATE FRONT (CONTINUED)			FOUNDATION LAMINATE FRONT (CONTINUED)		
			SOURCE LAMINATE CASE					
			GABLE FINISH					
D	W	H	Source Laminate	Grade 2 Laminate	Flintwood	Source Laminate	Grade 2 Laminate	Flintwood
29 / 737	28 / 711	84 / 2134	1622	2532	3268	1699	2609	3345
29 / 737	30 / 762	84 / 2134	1643	2553	3289	1726	2636	3372
29 / 737	32 / 813	84 / 2134	1665	2575	3311	1753	2663	3399
29 / 737	34 / 889	84 / 2134	1687	2597	3333	1780	2690	3426
29 / 737	36 / 914	84 / 2134	1708	2618	3354	1807	2717	3453
29 / 737	38 / 965	84 / 2134	1730	2640	3376	1834	2744	3480
29 / 737	40 / 1016	84 / 2134	1751	2661	3397	1861	2771	3507
29 / 737	28 / 711	90 / 2286	1826	2801	3565	1934	2909	3673
29 / 737	30 / 762	90 / 2286	1862	2837	3601	1978	2953	3717
29 / 737	32 / 813	90 / 2286	1900	2875	3639	2023	2998	3762
29 / 737	34 / 889	90 / 2286	1938	2913	3677	2068	3043	3807
29 / 737	36 / 914	90 / 2286	1974	2949	3713	2113	3088	3852
29 / 737	38 / 965	90 / 2286	2012	2987	3751	2158	3133	3897
29 / 737	40 / 1016	90 / 2286	2049	3024	3788	2203	3178	3942
29 / 737	28 / 711	96 / 2438	1955	2994	3786	2094	3133	3925
29 / 737	30 / 762	96 / 2438	1994	3033	3825	2143	3182	3974
29 / 737	32 / 813	96 / 2438	2032	3071	3863	2190	3229	4021
29 / 737	34 / 889	96 / 2438	2070	3109	3901	2238	3277	4069
29 / 737	36 / 914	96 / 2438	2108	3147	3939	2286	3325	4117
29 / 737	38 / 965	96 / 2438	2146	3185	3977	2334	3373	4165
29 / 737	40 / 1016	96 / 2438	2184	3223	4015	2382	3421	4213
30 / 762	28 / 711	84 / 2134	1622	2563	3268	1699	2640	3345
30 / 762	30 / 762	84 / 2134	1643	2584	3289	1726	2667	3372
30 / 762	32 / 813	84 / 2134	1665	2606	3311	1753	2694	3399
30 / 762	34 / 889	84 / 2134	1687	2628	3333	1780	2721	3426
30 / 762	36 / 914	84 / 2134	1708	2649	3354	1807	2748	3453
30 / 762	38 / 965	84 / 2134	1730	2671	3376	1834	2775	3480
30 / 762	40 / 1016	84 / 2134	1751	2692	3397	1861	2802	3507
30 / 762	28 / 711	90 / 2286	1826	2834	3565	1934	2942	3673
30 / 762	30 / 762	90 / 2286	1862	2870	3601	1978	2986	3717
30 / 762	32 / 813	90 / 2286	1900	2908	3639	2023	3031	3762
30 / 762	34 / 889	90 / 2286	1938	2946	3677	2068	3076	3807
30 / 762	36 / 914	90 / 2286	1974	2982	3713	2113	3121	3852
30 / 762	38 / 965	90 / 2286	2012	3020	3751	2158	3166	3897
30 / 762	40 / 1016	90 / 2286	2049	3057	3788	2203	3211	3942
30 / 762	28 / 711	96 / 2438	1955	3030	3786	2094	3169	3925
30 / 762	30 / 762	96 / 2438	1994	3069	3825	2143	3218	3974
30 / 762	32 / 813	96 / 2438	2032	3107	3863	2190	3265	4021
30 / 762	34 / 889	96 / 2438	2070	3145	3901	2238	3313	4069
30 / 762	36 / 914	96 / 2438	2108	3183	3939	2286	3361	4117
30 / 762	38 / 965	96 / 2438	2146	3221	3977	2334	3409	4165
30 / 762	40 / 1016	96 / 2438	2184	3259	4015	2382	3457	4213

Pricing is continued on the following page.

# CEKO

## Cabinet Kit for One Appliance – Doors (Continued)

**DIMENSIONS**  
INCHES / MM

D	W	H
24 / 610	28 / 711	84 / 2134
24 / 610	30 / 762	84 / 2134
24 / 610	32 / 813	84 / 2134
24 / 610	34 / 889	84 / 2134
24 / 610	36 / 914	84 / 2134
24 / 610	38 / 965	84 / 2134
24 / 610	40 / 1016	84 / 2134
24 / 610	28 / 711	90 / 2286
24 / 610	30 / 762	90 / 2286
24 / 610	32 / 813	90 / 2286
24 / 610	34 / 889	90 / 2286
24 / 610	36 / 914	90 / 2286
24 / 610	38 / 965	90 / 2286
24 / 610	40 / 1016	90 / 2286
24 / 610	28 / 711	96 / 2438
24 / 610	30 / 762	96 / 2438
24 / 610	32 / 813	96 / 2438
24 / 610	34 / 889	96 / 2438
24 / 610	36 / 914	96 / 2438
24 / 610	38 / 965	96 / 2438
24 / 610	40 / 1016	96 / 2438
25 / 635	28 / 711	84 / 2134
25 / 635	30 / 762	84 / 2134
25 / 635	32 / 813	84 / 2134
25 / 635	34 / 889	84 / 2134
25 / 635	36 / 914	84 / 2134
25 / 635	38 / 965	84 / 2134
25 / 635	40 / 1016	84 / 2134
25 / 635	28 / 711	90 / 2286
25 / 635	30 / 762	90 / 2286
25 / 635	32 / 813	90 / 2286
25 / 635	34 / 889	90 / 2286
25 / 635	36 / 914	90 / 2286
25 / 635	38 / 965	90 / 2286
25 / 635	40 / 1016	90 / 2286
25 / 635	28 / 711	96 / 2438
25 / 635	30 / 762	96 / 2438
25 / 635	32 / 813	96 / 2438
25 / 635	34 / 889	96 / 2438
25 / 635	36 / 914	96 / 2438
25 / 635	38 / 965	96 / 2438
25 / 635	40 / 1016	96 / 2438

**PRICING**

69" APPLIANCE SECTION HEIGHT					
GRADE 2 LAMINATE FRONT					
SOURCE LAMINATE CASE			FLINTWOOD CASE		
GABLE FINISH					
Source Laminate	Grade 2 Laminate	Flintwood	Source Laminate	Grade 2 Laminate	Flintwood
1665	2418	3090	2887	3640	4312
1688	2441	3113	2929	3682	4354
1712	2465	3137	2972	3725	4397
1734	2487	3159	3014	3767	4439
1757	2510	3182	3056	3809	4481
1780	2533	3205	3097	3850	4522
1804	2557	3229	3140	3893	4565
1866	2673	3368	3352	4159	4854
1905	2712	3407	3409	4216	4911
1943	2750	3445	3469	4276	4971
1982	2789	3484	3527	4334	5029
2022	2829	3524	3587	4394	5089
2061	2868	3563	3647	4454	5149
2100	2907	3602	3705	4512	5207
2010	2870	3597	3547	4407	5134
2053	2913	3640	3612	4472	5199
2094	2954	3681	3678	4538	5265
2137	2997	3724	3745	4605	5332
2180	3040	3767	3811	4671	5398
2222	3082	3809	3878	4738	5465
2265	3125	3852	3945	4805	5532
1665	2449	3090	2887	3671	4312
1688	2472	3113	2929	3713	4354
1712	2496	3137	2972	3756	4397
1734	2518	3159	3014	3798	4439
1757	2541	3182	3056	3840	4481
1780	2564	3205	3097	3881	4522
1804	2588	3229	3140	3924	4565
1866	2706	3368	3352	4192	4854
1905	2745	3407	3409	4249	4911
1943	2783	3445	3469	4309	4971
1982	2822	3484	3527	4367	5029
2022	2862	3524	3587	4427	5089
2061	2901	3563	3647	4487	5149
2100	2940	3602	3705	4545	5207
2010	2906	3597	3547	4443	5134
2053	2949	3640	3612	4508	5199
2094	2990	3681	3678	4574	5265
2137	3033	3724	3745	4641	5332
2180	3076	3767	3811	4707	5398
2222	3118	3809	3878	4774	5465
2265	3161	3852	3945	4841	5532

Pricing is continued on the following page.

# storage cabinets

**Xpress**

## CEKO

### Cabinet Kit for One Appliance – Doors (Continued)

DIMENSIONS  
INCHES / MM

PRICING

DIMENSIONS			PRICING					
			69" APPLIANCE SECTION HEIGHT					
			GRADE 2 LAMINATE FRONT (CONTINUED)					
			SOURCE LAMINATE CASE			FLINTWOOD CASE		
			GABLE FINISH					
D	W	H	Source Laminate	Grade 2 Laminate	Flintwood	Source Laminate	Grade 2 Laminate	Flintwood
29 / 737	28 / 711	84 / 2134	1814	2724	3460	3079	3989	4725
29 / 737	30 / 762	84 / 2134	1838	2748	3484	3133	4043	4779
29 / 737	32 / 813	84 / 2134	1862	2772	3508	3188	4098	4834
29 / 737	34 / 889	84 / 2134	1886	2796	3532	3242	4152	4888
29 / 737	36 / 914	84 / 2134	1911	2821	3557	3297	4207	4943
29 / 737	38 / 965	84 / 2134	1935	2845	3581	3351	4261	4997
29 / 737	40 / 1016	84 / 2134	1959	2869	3605	3406	4316	5052
29 / 737	28 / 711	90 / 2286	2041	3016	3780	3593	4568	5332
29 / 737	30 / 762	90 / 2286	2082	3057	3821	3670	4645	5409
29 / 737	32 / 813	90 / 2286	2125	3100	3864	3749	4724	5488
29 / 737	34 / 889	90 / 2286	2166	3141	3905	3826	4801	5565
29 / 737	36 / 914	90 / 2286	2208	3183	3947	3904	4879	5643
29 / 737	38 / 965	90 / 2286	2250	3225	3989	3981	4956	5720
29 / 737	40 / 1016	90 / 2286	2291	3266	4030	4058	5033	5797
29 / 737	28 / 711	96 / 2438	2199	3238	4030	3832	4871	5663
29 / 737	30 / 762	96 / 2438	2245	3284	4076	3916	4955	5747
29 / 737	32 / 813	96 / 2438	2290	3329	4121	4002	5041	5833
29 / 737	34 / 889	96 / 2438	2335	3374	4166	4087	5126	5918
29 / 737	36 / 914	96 / 2438	2380	3419	4211	4172	5211	6003
29 / 737	38 / 965	96 / 2438	2425	3464	4256	4257	5296	6088
29 / 737	40 / 1016	96 / 2438	2471	3510	4302	4342	5381	6173
30 / 762	28 / 711	84 / 2134	1814	2755	3460	3079	4020	4725
30 / 762	30 / 762	84 / 2134	1838	2779	3484	3133	4074	4779
30 / 762	32 / 813	84 / 2134	1862	2803	3508	3188	4129	4834
30 / 762	34 / 889	84 / 2134	1886	2827	3532	3242	4183	4888
30 / 762	36 / 914	84 / 2134	1911	2852	3557	3297	4238	4943
30 / 762	38 / 965	84 / 2134	1935	2876	3581	3351	4292	4997
30 / 762	40 / 1016	84 / 2134	1959	2900	3605	3406	4347	5052
30 / 762	28 / 711	90 / 2286	2041	3049	3780	3593	4601	5332
30 / 762	30 / 762	90 / 2286	2082	3090	3821	3670	4678	5409
30 / 762	32 / 813	90 / 2286	2125	3133	3864	3749	4757	5488
30 / 762	34 / 889	90 / 2286	2166	3174	3905	3826	4834	5565
30 / 762	36 / 914	90 / 2286	2208	3216	3947	3904	4912	5643
30 / 762	38 / 965	90 / 2286	2250	3258	3989	3981	4989	5720
30 / 762	40 / 1016	90 / 2286	2291	3299	4030	4058	5066	5797
30 / 762	28 / 711	96 / 2438	2199	3274	4030	3832	4907	5663
30 / 762	30 / 762	96 / 2438	2245	3320	4076	3916	4991	5747
30 / 762	32 / 813	96 / 2438	2290	3365	4121	4002	5077	5833
30 / 762	34 / 889	96 / 2438	2335	3410	4166	4087	5162	5918
30 / 762	36 / 914	96 / 2438	2380	3455	4211	4172	5247	6003
30 / 762	38 / 965	96 / 2438	2425	3500	4256	4257	5332	6088
30 / 762	40 / 1016	96 / 2438	2471	3546	4302	4342	5417	6173

Pricing is continued on the following page.

# C E K O

## Cabinet Kit for One Appliance – Doors (Continued)

**DIMENSIONS**  
INCHES / MM

D	W	H
24 / 610	28 / 711	84 / 2134
24 / 610	30 / 762	84 / 2134
24 / 610	32 / 813	84 / 2134
24 / 610	34 / 889	84 / 2134
24 / 610	36 / 914	84 / 2134
24 / 610	38 / 965	84 / 2134
24 / 610	40 / 1016	84 / 2134
24 / 610	28 / 711	90 / 2286
24 / 610	30 / 762	90 / 2286
24 / 610	32 / 813	90 / 2286
24 / 610	34 / 889	90 / 2286
24 / 610	36 / 914	90 / 2286
24 / 610	38 / 965	90 / 2286
24 / 610	40 / 1016	90 / 2286
24 / 610	28 / 711	96 / 2438
24 / 610	30 / 762	96 / 2438
24 / 610	32 / 813	96 / 2438
24 / 610	34 / 889	96 / 2438
24 / 610	36 / 914	96 / 2438
24 / 610	38 / 965	96 / 2438
24 / 610	40 / 1016	96 / 2438
25 / 635	28 / 711	84 / 2134
25 / 635	30 / 762	84 / 2134
25 / 635	32 / 813	84 / 2134
25 / 635	34 / 889	84 / 2134
25 / 635	36 / 914	84 / 2134
25 / 635	38 / 965	84 / 2134
25 / 635	40 / 1016	84 / 2134
25 / 635	28 / 711	90 / 2286
25 / 635	30 / 762	90 / 2286
25 / 635	32 / 813	90 / 2286
25 / 635	34 / 889	90 / 2286
25 / 635	36 / 914	90 / 2286
25 / 635	38 / 965	90 / 2286
25 / 635	40 / 1016	90 / 2286
25 / 635	28 / 711	96 / 2438
25 / 635	30 / 762	96 / 2438
25 / 635	32 / 813	96 / 2438
25 / 635	34 / 889	96 / 2438
25 / 635	36 / 914	96 / 2438
25 / 635	38 / 965	96 / 2438
25 / 635	40 / 1016	96 / 2438

**PRICING**

69" APPLIANCE SECTION HEIGHT					
FLINTWOOD FRONT					
SOURCE LAMINATE CASE			FLINTWOOD CASE		
GABLE FINISH					
Source Laminate	Grade 2 Laminate	Flintwood	Source Laminate	Grade 2 Laminate	Flintwood
1649	2402	3074	2873	3626	4298
1671	2424	3096	2914	3667	4339
1695	2448	3120	2957	3710	4382
1717	2470	3142	2999	3752	4424
1740	2493	3165	3041	3794	4466
1763	2516	3188	3082	3835	4507
1786	2539	3211	3124	3877	4549
1848	2655	3350	3335	4142	4837
1886	2693	3388	3392	4199	4894
1924	2731	3426	3452	4259	4954
1963	2770	3465	3510	4317	5012
2002	2809	3504	3569	4376	5071
2041	2848	3543	3629	4436	5131
2079	2886	3581	3686	4493	5188
1990	2850	3577	3529	4389	5116
2032	2892	3619	3594	4454	5181
2073	2933	3660	3660	4520	5247
2116	2976	3703	3727	4587	5314
2158	3018	3745	3792	4652	5379
2200	3060	3787	3859	4719	5446
2242	3102	3829	3925	4785	5512
1649	2433	3074	2873	3657	4298
1671	2455	3096	2914	3698	4339
1695	2479	3120	2957	3741	4382
1717	2501	3142	2999	3783	4424
1740	2524	3165	3041	3825	4466
1763	2547	3188	3082	3866	4507
1786	2570	3211	3124	3908	4549
1848	2688	3350	3335	4175	4837
1886	2726	3388	3392	4232	4894
1924	2764	3426	3452	4292	4954
1963	2803	3465	3510	4350	5012
2002	2842	3504	3569	4409	5071
2041	2881	3543	3629	4469	5131
2079	2919	3581	3686	4526	5188
1990	2886	3577	3529	4425	5116
2032	2928	3619	3594	4490	5181
2073	2969	3660	3660	4556	5247
2116	3012	3703	3727	4623	5314
2158	3054	3745	3792	4688	5379
2200	3096	3787	3859	4755	5446
2242	3138	3829	3925	4821	5512

Pricing is continued on the following page.

# storage cabinets

**Xpress**

## CEKO

### Cabinet Kit for One Appliance – Doors (Continued)

DIMENSIONS  
INCHES / MM

PRICING

DIMENSIONS			PRICING					
			69" APPLIANCE SECTION HEIGHT					
			SOURCE LAMINATE CASE			FLINTWOOD CASE		
			GABLE FINISH					
D	W	H	Source Laminate	Grade 2 Laminate	Flintwood	Source Laminate	Grade 2 Laminate	Flintwood
29 / 737	28 / 711	84 / 2134	1796	2706	3442	3064	3974	4710
29 / 737	30 / 762	84 / 2134	1819	2729	3465	3117	4027	4763
29 / 737	32 / 813	84 / 2134	1844	2754	3490	3172	4082	4818
29 / 737	34 / 889	84 / 2134	1868	2778	3514	3226	4136	4872
29 / 737	36 / 914	84 / 2134	1892	2802	3538	3281	4191	4927
29 / 737	38 / 965	84 / 2134	1916	2826	3562	3335	4245	4981
29 / 737	40 / 1016	84 / 2134	1940	2850	3586	3389	4299	5035
29 / 737	28 / 711	90 / 2286	2021	2996	3760	3575	4550	5314
29 / 737	30 / 762	90 / 2286	2061	3036	3800	3651	4626	5390
29 / 737	32 / 813	90 / 2286	2104	3079	3843	3730	4705	5469
29 / 737	34 / 889	90 / 2286	2145	3120	3884	3807	4782	5546
29 / 737	36 / 914	90 / 2286	2186	3161	3925	3885	4860	5624
29 / 737	38 / 965	90 / 2286	2228	3203	3967	3962	4937	5701
29 / 737	40 / 1016	90 / 2286	2268	3243	4007	4038	5013	5777
29 / 737	28 / 711	96 / 2438	2177	3216	4008	3813	4852	5644
29 / 737	30 / 762	96 / 2438	2222	3261	4053	3896	4935	5727
29 / 737	32 / 813	96 / 2438	2267	3306	4098	3982	5021	5813
29 / 737	34 / 889	96 / 2438	2312	3351	4143	4067	5106	5898
29 / 737	36 / 914	96 / 2438	2356	3395	4187	4151	5190	5982
29 / 737	38 / 965	96 / 2438	2401	3440	4232	4236	5275	6067
29 / 737	40 / 1016	96 / 2438	2446	3485	4277	4320	5359	6151
30 / 762	28 / 711	84 / 2134	1796	2737	3442	3064	4005	4710
30 / 762	30 / 762	84 / 2134	1819	2760	3465	3117	4058	4763
30 / 762	32 / 813	84 / 2134	1844	2785	3490	3172	4113	4818
30 / 762	34 / 889	84 / 2134	1868	2809	3514	3226	4167	4872
30 / 762	36 / 914	84 / 2134	1892	2833	3538	3281	4222	4927
30 / 762	38 / 965	84 / 2134	1916	2857	3562	3335	4276	4981
30 / 762	40 / 1016	84 / 2134	1940	2881	3586	3389	4330	5035
30 / 762	28 / 711	90 / 2286	2021	3029	3760	3575	4583	5314
30 / 762	30 / 762	90 / 2286	2061	3069	3800	3651	4659	5390
30 / 762	32 / 813	90 / 2286	2104	3112	3843	3730	4738	5469
30 / 762	34 / 889	90 / 2286	2145	3153	3884	3807	4815	5546
30 / 762	36 / 914	90 / 2286	2186	3194	3925	3885	4893	5624
30 / 762	38 / 965	90 / 2286	2228	3236	3967	3962	4970	5701
30 / 762	40 / 1016	90 / 2286	2268	3276	4007	4038	5046	5777
30 / 762	28 / 711	96 / 2438	2177	3252	4008	3813	4888	5644
30 / 762	30 / 762	96 / 2438	2222	3297	4053	3896	4971	5727
30 / 762	32 / 813	96 / 2438	2267	3342	4098	3982	5057	5813
30 / 762	34 / 889	96 / 2438	2312	3387	4143	4067	5142	5898
30 / 762	36 / 914	96 / 2438	2356	3431	4187	4151	5226	5982
30 / 762	38 / 965	96 / 2438	2401	3476	4232	4236	5311	6067
30 / 762	40 / 1016	96 / 2438	2446	3521	4277	4320	5395	6151

Pricing is continued on the following page.

# C E K O

## Cabinet Kit for One Appliance – Doors (Continued)

**DIMENSIONS**  
INCHES / MM

D	W	H
24 / 610	28 / 711	90 / 2286
24 / 610	30 / 762	90 / 2286
24 / 610	32 / 813	90 / 2286
24 / 610	34 / 889	90 / 2286
24 / 610	36 / 914	90 / 2286
24 / 610	38 / 965	90 / 2286
24 / 610	40 / 1016	90 / 2286
24 / 610	28 / 711	96 / 2438
24 / 610	30 / 762	96 / 2438
24 / 610	32 / 813	96 / 2438
24 / 610	34 / 889	96 / 2438
24 / 610	36 / 914	96 / 2438
24 / 610	38 / 965	96 / 2438
24 / 610	40 / 1016	96 / 2438
25 / 635	28 / 711	90 / 2286
25 / 635	30 / 762	90 / 2286
25 / 635	32 / 813	90 / 2286
25 / 635	34 / 889	90 / 2286
25 / 635	36 / 914	90 / 2286
25 / 635	38 / 965	90 / 2286
25 / 635	40 / 1016	90 / 2286
25 / 635	28 / 711	96 / 2438
25 / 635	30 / 762	96 / 2438
25 / 635	32 / 813	96 / 2438
25 / 635	34 / 889	96 / 2438
25 / 635	36 / 914	96 / 2438
25 / 635	38 / 965	96 / 2438
25 / 635	40 / 1016	96 / 2438
29 / 737	28 / 711	90 / 2286
29 / 737	30 / 762	90 / 2286
29 / 737	32 / 813	90 / 2286
29 / 737	34 / 889	90 / 2286
29 / 737	36 / 914	90 / 2286
29 / 737	38 / 965	90 / 2286
29 / 737	40 / 1016	90 / 2286
29 / 737	28 / 711	96 / 2438
29 / 737	30 / 762	96 / 2438
29 / 737	32 / 813	96 / 2438
29 / 737	34 / 889	96 / 2438
29 / 737	36 / 914	96 / 2438
29 / 737	38 / 965	96 / 2438
29 / 737	40 / 1016	96 / 2438

**PRICING**

72" APPLIANCE SECTION HEIGHT					
SOURCE LAMINATE FRONT			FOUNDATION LAMINATE FRONT		
SOURCE LAMINATE CASE					
GABLE FINISH					
Source Laminate	Grade 2 Laminate	Flintwood	Source Laminate	Grade 2 Laminate	Flintwood
1542	2349	3044	1634	2441	3136
1566	2373	3068	1666	2473	3168
1591	2398	3093	1697	2504	3199
1614	2421	3116	1726	2533	3228
1638	2445	3140	1757	2564	3259
1663	2470	3165	1788	2595	3290
1686	2493	3188	1818	2625	3320
1729	2589	3316	1852	2712	3439
1764	2624	3351	1897	2757	3484
1798	2658	3385	1939	2799	3526
1834	2694	3421	1983	2843	3570
1869	2729	3456	2028	2888	3615
1904	2764	3491	2071	2931	3658
1940	2800	3527	2116	2976	3703
1542	2382	3044	1634	2474	3136
1566	2406	3068	1666	2506	3168
1591	2431	3093	1697	2537	3199
1614	2454	3116	1726	2566	3228
1638	2478	3140	1757	2597	3259
1663	2503	3165	1788	2628	3290
1686	2526	3188	1818	2658	3320
1729	2625	3316	1852	2748	3439
1764	2660	3351	1897	2793	3484
1798	2694	3385	1939	2835	3526
1834	2730	3421	1983	2879	3570
1869	2765	3456	2028	2924	3615
1904	2800	3491	2071	2967	3658
1940	2836	3527	2116	3012	3703
1697	2672	3436	1789	2764	352
1722	2697	3461	1822	2797	3561
1749	2724	3488	1855	2830	3594
1774	2749	3513	1886	2861	3625
1799	2774	3538	1918	2893	3657
1825	2800	3564	1950	2925	3689
1849	2824	3588	1981	2956	3720
1912	2951	3743	2035	3074	3866
1950	2989	3781	2083	3122	3914
1988	3027	3819	2129	3168	3960
2025	3064	3856	2174	3213	4005
2063	3102	3894	2222	3261	4053
2101	3140	3932	2268	3307	4099
2139	3178	3970	2315	3354	4146

Pricing is continued on the following page.



# storage cabinets

**Xpress**

## CEKO

### Cabinet Kit for One Appliance – Doors (Continued)

**DIMENSIONS**  
INCHES / MM

D	W	H
30 / 762	28 / 711	90 / 2286
30 / 762	30 / 762	90 / 2286
30 / 762	32 / 813	90 / 2286
30 / 762	34 / 889	90 / 2286
30 / 762	36 / 914	90 / 2286
30 / 762	38 / 965	90 / 2286
30 / 762	40 / 1016	90 / 2286
30 / 762	28 / 711	96 / 2438
30 / 762	30 / 762	96 / 2438
30 / 762	32 / 813	96 / 2438
30 / 762	34 / 889	96 / 2438
30 / 762	36 / 914	96 / 2438
30 / 762	38 / 965	96 / 2438
30 / 762	40 / 1016	96 / 2438

24 / 610	28 / 711	90 / 2286
24 / 610	30 / 762	90 / 2286
24 / 610	32 / 813	90 / 2286
24 / 610	34 / 889	90 / 2286
24 / 610	36 / 914	90 / 2286
24 / 610	38 / 965	90 / 2286
24 / 610	40 / 1016	90 / 2286

24 / 610	28 / 711	96 / 2438
24 / 610	30 / 762	96 / 2438
24 / 610	32 / 813	96 / 2438
24 / 610	34 / 889	96 / 2438
24 / 610	36 / 914	96 / 2438
24 / 610	38 / 965	96 / 2438
24 / 610	40 / 1016	96 / 2438

25 / 635	28 / 711	90 / 2286
25 / 635	30 / 762	90 / 2286
25 / 635	32 / 813	90 / 2286
25 / 635	34 / 889	90 / 2286
25 / 635	36 / 914	90 / 2286
25 / 635	38 / 965	90 / 2286
25 / 635	40 / 1016	90 / 2286

**PRICING**

#### 72" APPLIANCE SECTION HEIGHT

##### SOURCE LAMINATE FRONT (CONTINUED)

##### SOURCE LAMINATE CASE

##### GABLE FINISH

Source Laminate	Grade 2 Laminate	Flintwood
1697	2705	3436
1722	2730	3461
1749	2757	3488
1774	2782	3513
1799	2807	3538
1825	2833	3564
1849	2857	3588
1912	2987	3743
1950	3025	3781
1988	3063	3819
2025	3100	3856
2063	3138	3894
2101	3176	3932
2139	3214	3970

##### FOUNDATION LAMINATE FRONT (CONTINUED)

Source Laminate	Grade 2 Laminate	Flintwood
1789	2797	3528
1822	2830	3561
1855	2863	3594
1886	2894	3625
1918	2926	3657
1950	2958	3689
1981	2989	3720
2035	3110	3866
2083	3158	3914
2129	3204	3960
2174	3249	4005
2222	3297	4053
2268	3343	4099
2315	3390	4146

#### GRADE 2 LAMINATE FRONT

##### SOURCE LAMINATE CASE

##### GABLE FINISH

Source Laminate	Grade 2 Laminate	Flintwood
1744	2551	3246
1772	2579	3274
1800	2607	3302
1827	2634	3329
1854	2661	3356
1882	2689	3384
1910	2717	3412
1957	2817	3544
1998	2858	3585
2038	2898	3625
2079	2939	3666
2120	2980	3707
2161	3021	3748
2202	3062	3789
1744	2584	3246
1772	2612	3274
1800	2640	3302
1827	2667	3329
1854	2694	3356
1882	2722	3384
1910	2750	3412

##### FLINTWOOD CASE

Source Laminate	Grade 2 Laminate	Flintwood
3006	3813	4508
3051	3858	4553
3095	3902	4597
3140	3947	4642
3185	3992	4687
3230	4037	4732
3275	4082	4777
3468	4328	5055
3531	4391	5118
3594	4454	5181
3656	4516	5243
3718	4578	5305
3781	4641	5368
3843	4703	5430
3006	3846	4508
3051	3891	4553
3095	3935	4597
3140	3980	4642
3185	4025	4687
3230	4070	4732
3275	4115	4777

Pricing is continued on the following page.

**C E K O**  
**Cabinet Kit for One Appliance –**  
**Doors (Continued)**

**DIMENSIONS**  
**INCHES / MM**

D	W	H
25 / 635	28 / 711	96 / 2438
25 / 635	30 / 762	96 / 2438
25 / 635	32 / 813	96 / 2438
25 / 635	34 / 889	96 / 2438
25 / 635	36 / 914	96 / 2438
25 / 635	38 / 965	96 / 2438
25 / 635	40 / 1016	96 / 2438
29 / 737	28 / 711	90 / 2286
29 / 737	30 / 762	90 / 2286
29 / 737	32 / 813	90 / 2286
29 / 737	34 / 889	90 / 2286
29 / 737	36 / 914	90 / 2286
29 / 737	38 / 965	90 / 2286
29 / 737	40 / 1016	90 / 2286
29 / 737	28 / 711	96 / 2438
29 / 737	30 / 762	96 / 2438
29 / 737	32 / 813	96 / 2438
29 / 737	34 / 889	96 / 2438
29 / 737	36 / 914	96 / 2438
29 / 737	38 / 965	96 / 2438
29 / 737	40 / 1016	96 / 2438
30 / 762	28 / 711	90 / 2286
30 / 762	30 / 762	90 / 2286
30 / 762	32 / 813	90 / 2286
30 / 762	34 / 889	90 / 2286
30 / 762	36 / 914	90 / 2286
30 / 762	38 / 965	90 / 2286
30 / 762	40 / 1016	90 / 2286
30 / 762	28 / 711	96 / 2438
30 / 762	30 / 762	96 / 2438
30 / 762	32 / 813	96 / 2438
30 / 762	34 / 889	96 / 2438
30 / 762	36 / 914	96 / 2438
30 / 762	38 / 965	96 / 2438
30 / 762	40 / 1016	96 / 2438

**PRICING**

72" APPLIANCE SECTION HEIGHT					
GRADE 2 LAMINATE FRONT (CONTINUED)					
SOURCE LAMINATE CASE			FLINTWOOD CASE		
GABLE FINISH					
Source Laminate	Grade 2 Laminate	Flintwood	Source Laminate	Grade 2 Laminate	Flintwood
1957	2853	3544	3468	4364	5055
1998	2894	3585	3531	4427	5118
2038	2934	3625	3594	4490	5181
2079	2975	3666	3656	4552	5243
2120	3016	3707	3718	4614	5305
2161	3057	3748	3781	4677	5368
2202	3098	3789	3843	4739	5430
1901	2876	3640	3209	4184	4948
1930	2905	3669	3267	4242	5006
1959	2934	3698	3324	4299	5063
1988	2963	3727	3381	4356	5120
2017	2992	3756	3438	4413	5177
2046	3021	3785	3496	4471	5235
2075	3050	3814	3553	4528	5292
2142	3181	3973	3734	4773	5565
2186	3225	4017	3815	4854	5646
2230	3269	4061	3898	4937	5729
2272	3311	4103	3978	5017	5809
2316	3355	4147	4060	5099	5891
2360	3399	4191	4141	5180	5972
2403	3442	4234	4222	5261	6053
1901	2909	3640	3209	4217	4948
1930	2938	3669	3267	4275	5006
1959	2967	3698	3324	4332	5063
1988	2996	3727	3381	4389	5120
2017	3025	3756	3438	4446	5177
2046	3054	3785	3496	4504	5235
2075	3083	3814	3553	4561	5292
2142	3217	3973	3734	4809	5565
2186	3261	4017	3815	4890	5646
2230	3305	4061	3898	4973	5729
2272	3347	4103	3978	5053	5809
2316	3391	4147	4060	5135	5891
2360	3435	4191	4141	5216	5972
2403	3478	4234	4222	5297	6053

Pricing is continued on the following page.

# storage cabinets

Xpress

## CEKO

### Cabinet Kit for One Appliance – Doors (Continued)

DIMENSIONS  
INCHES / MM

PRICING

DIMENSIONS			72" APPLIANCE SECTION HEIGHT					
			FLINTWOOD FRONT					
			SOURCE LAMINATE CASE			FLINTWOOD CASE		
			GABLE FINISH					
D	W	H	Source Laminate	Grade 2 Laminate	Flintwood	Source Laminate	Grade 2 Laminate	Flintwood
24 / 610	28 / 711	90 / 2286	1727	2534	3229	2991	3798	4493
24 / 610	30 / 762	90 / 2286	1754	2561	3256	3035	3842	4537
24 / 610	32 / 813	90 / 2286	1782	2589	3284	3080	3887	4582
24 / 610	34 / 889	90 / 2286	1809	2616	3311	3125	3932	4627
24 / 610	36 / 914	90 / 2286	1836	2643	3338	3169	3976	4671
24 / 610	38 / 965	90 / 2286	1864	2671	3366	3214	4021	4716
24 / 610	40 / 1016	90 / 2286	1891	2698	3393	3259	4066	4761
24 / 610	28 / 711	96 / 2438	1938	2798	3525	3451	4311	5038
24 / 610	30 / 762	96 / 2438	1978	2838	3565	3513	4373	5100
24 / 610	32 / 813	96 / 2438	2018	2878	3605	3576	4436	5163
24 / 610	34 / 889	96 / 2438	2059	2919	3646	3638	4498	5225
24 / 610	36 / 914	96 / 2438	2099	2959	3686	3699	4559	5286
24 / 610	38 / 965	96 / 2438	2140	3000	3727	3763	4623	5350
24 / 610	40 / 1016	96 / 2438	2180	3040	3767	3824	4684	5411
25 / 635	28 / 711	90 / 2286	1727	2567	3229	2991	3831	4493
25 / 635	30 / 762	90 / 2286	1754	2594	3256	3035	3875	4537
25 / 635	32 / 813	90 / 2286	1782	2622	3284	3080	3920	4582
25 / 635	34 / 889	90 / 2286	1809	2649	3311	3125	3965	4627
25 / 635	36 / 914	90 / 2286	1836	2676	3338	3169	4009	4671
25 / 635	38 / 965	90 / 2286	1864	2704	3366	3214	4054	4716
25 / 635	40 / 1016	90 / 2286	1891	2731	3393	3259	4099	4761
25 / 635	28 / 711	96 / 2438	1938	2834	3525	3451	4347	5038
25 / 635	30 / 762	96 / 2438	1978	2874	3565	3513	4409	5100
25 / 635	32 / 813	96 / 2438	2018	2914	3605	3576	4472	5163
25 / 635	34 / 889	96 / 2438	2059	2955	3646	3638	4534	5225
25 / 635	36 / 914	96 / 2438	2099	2995	3686	3699	4595	5286
25 / 635	38 / 965	96 / 2438	2140	3036	3727	3763	4659	5350
25 / 635	40 / 1016	96 / 2438	2180	3076	3767	3824	4720	5411
29 / 737	28 / 711	90 / 2286	1882	2857	3621	3193	4168	4932
29 / 737	30 / 762	90 / 2286	1910	2885	3649	3250	4225	4989
29 / 737	32 / 813	90 / 2286	1940	2915	3679	3307	4282	5046
29 / 737	34 / 889	90 / 2286	1969	2944	3708	3365	4340	5104
29 / 737	36 / 914	90 / 2286	1997	2972	3736	3421	4396	5160
29 / 737	38 / 965	90 / 2286	2026	3001	3765	3479	4454	5218
29 / 737	40 / 1016	90 / 2286	2054	3029	3793	3535	4510	5274
29 / 737	28 / 711	96 / 2438	2121	3160	3952	3716	4755	5547
29 / 737	30 / 762	96 / 2438	2164	3203	3995	3796	4835	5627
29 / 737	32 / 813	96 / 2438	2208	3247	4039	3879	4918	5710
29 / 737	34 / 889	96 / 2438	2250	3289	4081	3959	4998	5790
29 / 737	36 / 914	96 / 2438	2293	3332	4124	4040	5079	5871
29 / 737	38 / 965	96 / 2438	2337	3376	4168	4121	5160	5952
29 / 737	40 / 1016	96 / 2438	2379	3418	4210	4201	5240	6032

Pricing is continued on the following page.

**C E K O**  
**Cabinet Kit for One Appliance –**  
**Doors (Continued)**

**DIMENSIONS**  
**INCHES / MM**

D	W	H
30 / 762	28 / 711	90 / 2286
30 / 762	30 / 762	90 / 2286
30 / 762	32 / 813	90 / 2286
30 / 762	34 / 889	90 / 2286
30 / 762	36 / 914	90 / 2286
30 / 762	38 / 965	90 / 2286
30 / 762	40 / 1016	90 / 2286
30 / 762	28 / 711	96 / 2438
30 / 762	30 / 762	96 / 2438
30 / 762	32 / 813	96 / 2438
30 / 762	34 / 889	96 / 2438
30 / 762	36 / 914	96 / 2438
30 / 762	38 / 965	96 / 2438
30 / 762	40 / 1016	96 / 2438

**PRICING**

72" APPLIANCE SECTION HEIGHT					
FLINTWOOD FRONT (CONTINUED)					
SOURCE LAMINATE CASE			FLINTWOOD CASE		
GABLE FINISH					
Source Laminate	Grade 2 Laminate	Flintwood	Source Laminate	Grade 2 Laminate	Flintwood
1882	2890	3621	3193	4201	4932
1910	2918	3649	3250	4258	4989
1940	2948	3679	3307	4315	5046
1969	2977	3708	3365	4373	5104
1997	3005	3736	3421	4429	5160
2026	3034	3765	3479	4487	5218
2054	3062	3793	3535	4543	5274
2121	3196	3952	3716	4791	5547
2164	3239	3995	3796	4871	5627
2208	3283	4039	3879	4954	5710
2250	3325	4081	3959	5034	5790
2293	3368	4124	4040	5115	5871
2337	3412	4168	4121	5196	5952
2379	3454	4210	4201	5276	6032

24 / 610	28 / 711	90 / 2286
24 / 610	30 / 762	90 / 2286
24 / 610	32 / 813	90 / 2286
24 / 610	34 / 889	90 / 2286
24 / 610	36 / 914	90 / 2286
24 / 610	38 / 965	90 / 2286
24 / 610	40 / 1016	90 / 2286
24 / 610	28 / 711	96 / 2438
24 / 610	30 / 762	96 / 2438
24 / 610	32 / 813	96 / 2438
24 / 610	34 / 889	96 / 2438
24 / 610	36 / 914	96 / 2438
24 / 610	38 / 965	96 / 2438
24 / 610	40 / 1016	96 / 2438
25 / 635	28 / 711	90 / 2286
25 / 635	30 / 762	90 / 2286
25 / 635	32 / 813	90 / 2286
25 / 635	34 / 889	90 / 2286
25 / 635	36 / 914	90 / 2286
25 / 635	38 / 965	90 / 2286
25 / 635	40 / 1016	90 / 2286

75" APPLIANCE SECTION HEIGHT					
SOURCE LAMINATE FRONT			FOUNDATION LAMINATE FRONT		
SOURCE LAMINATE CASE					
GABLE FINISH					
Source Laminate	Grade 2 Laminate	Flintwood	Source Laminate	Grade 2 Laminate	Flintwood
1513	2320	3015	1590	2397	3092
1533	2340	3035	1616	2423	3118
1554	2361	3056	1642	2449	3144
1574	2381	3076	1667	2474	3169
1594	2401	3096	1693	2500	3195
1615	2422	3117	1719	2526	3221
1635	2442	3137	1745	2552	3247
1691	2551	3278	1799	2659	3386
1725	2585	3312	1841	2701	3428
1758	2618	3345	1881	2741	3468
1794	2654	3381	1924	2784	3511
1828	2688	3415	1967	2827	3554
1863	2723	3450	2009	2869	3596
1898	2758	3485	2052	2912	3639
1513	2353	3015	1590	2430	3092
1533	2373	3035	1616	2456	3118
1554	2394	3056	1642	2482	3144
1574	2414	3076	1667	2507	3169
1594	2434	3096	1693	2533	3195
1615	2455	3117	1719	2559	3221
1635	2475	3137	1745	2585	3247

Pricing is continued on the following page.

# storage cabinets

**Xpress**

## CEKO

### Cabinet Kit for One Appliance – Doors (Continued)

DIMENSIONS  
INCHES / MM

PRICING

75" APPLIANCE SECTION HEIGHT			75" APPLIANCE SECTION HEIGHT					
SOURCE LAMINATE FRONT (CONTINUED)			FOUNDATION LAMINATE FRONT (CONTINUED)					
SOURCE LAMINATE CASE			SOURCE LAMINATE CASE					
GABLE FINISH			GABLE FINISH					
D	W	H	Source Laminate	Grade 2 Laminate	Flintwood	Source Laminate	Grade 2 Laminate	Flintwood
25 / 635	28 / 711	96 / 2438	1691	2587	3278	1799	2695	3386
25 / 635	30 / 762	96 / 2438	1725	2621	3312	1841	2737	3428
25 / 635	32 / 813	96 / 2438	1758	2654	3345	1881	2777	3468
25 / 635	34 / 889	96 / 2438	1794	2690	3381	1924	2820	3511
25 / 635	36 / 914	96 / 2438	1828	2724	3415	1967	2863	3554
25 / 635	38 / 965	96 / 2438	1863	2759	3450	2009	2905	3596
25 / 635	40 / 1016	96 / 2438	1898	2794	3485	2052	2948	3639
29 / 737	28 / 711	90 / 2286	1665	2640	3404	1742	2717	3481
29 / 737	30 / 762	90 / 2286	1686	2661	3425	1769	2744	3508
29 / 737	32 / 813	90 / 2286	1708	2683	3447	1796	2771	3535
29 / 737	34 / 889	90 / 2286	1730	2705	3469	1823	2798	3562
29 / 737	36 / 914	90 / 2286	1751	2726	3490	1850	2825	3589
29 / 737	38 / 965	90 / 2286	1773	2748	3512	1877	2852	3616
29 / 737	40 / 1016	90 / 2286	1794	2769	3533	1904	2879	3643
29 / 737	28 / 711	96 / 2438	1870	2909	3701	1978	3017	3809
29 / 737	30 / 762	96 / 2438	1906	2945	3737	2022	3061	3853
29 / 737	32 / 813	96 / 2438	1944	2983	3775	2067	3106	3898
29 / 737	34 / 889	96 / 2438	1982	3021	3813	2112	3151	3943
29 / 737	36 / 914	96 / 2438	2018	3057	3849	2157	3196	3988
29 / 737	38 / 965	96 / 2438	2056	3095	3887	2202	3241	4033
29 / 737	40 / 1016	96 / 2438	2093	3132	3924	2247	3286	4078
30 / 762	28 / 711	90 / 2286	1665	2673	3404	1742	2750	3481
30 / 762	30 / 762	90 / 2286	1686	2694	3425	1769	2777	3508
30 / 762	32 / 813	90 / 2286	1708	2716	3447	1796	2804	3535
30 / 762	34 / 889	90 / 2286	1730	2738	3469	1823	2831	3562
30 / 762	36 / 914	90 / 2286	1751	2759	3490	1850	2858	3589
30 / 762	38 / 965	90 / 2286	1773	2781	3512	1877	2885	3616
30 / 762	40 / 1016	90 / 2286	1794	2802	3533	1904	2912	3643
30 / 762	28 / 711	96 / 2438	1870	2945	3701	1978	3053	3809
30 / 762	30 / 762	96 / 2438	1906	2981	3737	2022	3097	3853
30 / 762	32 / 813	96 / 2438	1944	3019	3775	2067	3142	3898
30 / 762	34 / 889	96 / 2438	1982	3057	3813	2112	3187	3943
30 / 762	36 / 914	96 / 2438	2018	3093	3849	2157	3232	3988
30 / 762	38 / 965	96 / 2438	2056	3131	3887	2202	3277	4033
30 / 762	40 / 1016	96 / 2438	2093	3168	3924	2247	3322	4078

Pricing is continued on the following page.

# CEKO

## Cabinet Kit for One Appliance – Doors (Continued)

**DIMENSIONS**  
INCHES / MM

D	W	H
24 / 610	28 / 711	90 / 2286
24 / 610	30 / 762	90 / 2286
24 / 610	32 / 813	90 / 2286
24 / 610	34 / 889	90 / 2286
24 / 610	36 / 914	90 / 2286
24 / 610	38 / 965	90 / 2286
24 / 610	40 / 1016	90 / 2286
24 / 610	28 / 711	96 / 2438
24 / 610	30 / 762	96 / 2438
24 / 610	32 / 813	96 / 2438
24 / 610	34 / 889	96 / 2438
24 / 610	36 / 914	96 / 2438
24 / 610	38 / 965	96 / 2438
24 / 610	40 / 1016	96 / 2438
25 / 635	28 / 711	90 / 2286
25 / 635	30 / 762	90 / 2286
25 / 635	32 / 813	90 / 2286
25 / 635	34 / 889	90 / 2286
25 / 635	36 / 914	90 / 2286
25 / 635	38 / 965	90 / 2286
25 / 635	40 / 1016	90 / 2286
25 / 635	28 / 711	96 / 2438
25 / 635	30 / 762	96 / 2438
25 / 635	32 / 813	96 / 2438
25 / 635	34 / 889	96 / 2438
25 / 635	36 / 914	96 / 2438
25 / 635	38 / 965	96 / 2438
25 / 635	40 / 1016	96 / 2438
29 / 737	28 / 711	90 / 2286
29 / 737	30 / 762	90 / 2286
29 / 737	32 / 813	90 / 2286
29 / 737	34 / 889	90 / 2286
29 / 737	36 / 914	90 / 2286
29 / 737	38 / 965	90 / 2286
29 / 737	40 / 1016	90 / 2286
29 / 737	28 / 711	96 / 2438
29 / 737	30 / 762	96 / 2438
29 / 737	32 / 813	96 / 2438
29 / 737	34 / 889	96 / 2438
29 / 737	36 / 914	96 / 2438
29 / 737	38 / 965	96 / 2438
29 / 737	40 / 1016	96 / 2438

**PRICING**

75" APPLIANCE SECTION HEIGHT					
GRADE 2 LAMINATE FRONT					
SOURCE LAMINATE CASE			FLINTWOOD CASE		
GABLE FINISH					
Source Laminate	Grade 2 Laminate	Flintwood	Source Laminate	Grade 2 Laminate	Flintwood
1704	2511	3206	2925	3732	4427
1727	2534	3229	2967	3774	4469
1750	2557	3252	3010	3817	4512
1772	2579	3274	3052	3859	4554
1796	2603	3298	3094	3901	4596
1819	2626	3321	3135	3942	4637
1842	2649	3344	3178	3985	4680
1905	2765	3492	3390	4250	4977
1944	2804	3531	3448	4308	5035
1982	2842	3569	3507	4367	5094
2021	2881	3608	3565	4425	5152
2060	2920	3647	3625	4485	5212
2099	2959	3686	3685	4545	5272
2138	2998	3725	3743	4603	5330
1704	2544	3206	2925	3765	4427
1727	2567	3229	2967	3807	4469
1750	2590	3252	3010	3850	4512
1772	2612	3274	3052	3892	4554
1796	2636	3298	3094	3934	4596
1819	2659	3321	3135	3975	4637
1842	2682	3344	3178	4018	4680
1905	2801	3492	3390	4286	4977
1944	2840	3531	3448	4344	5035
1982	2878	3569	3507	4403	5094
2021	2917	3608	3565	4461	5152
2060	2956	3647	3625	4521	5212
2099	2995	3686	3685	4581	5272
2138	3034	3725	3743	4639	5330
1857	2832	3596	3122	4097	4861
1881	2856	3620	3176	4151	4915
1906	2881	3645	3231	4206	4970
1930	2905	3669	3285	4260	5024
1954	2929	3693	3341	4316	5080
1978	2953	3717	3394	4369	5133
2003	2978	3742	3449	4424	5188
2086	3125	3917	3637	4676	5468
2127	3166	3958	3714	4753	5545
2169	3208	4000	3793	4832	5624
2210	3249	4041	3870	4909	5701
2252	3291	4083	3949	4988	5780
2294	3333	4125	4026	5065	5857
2335	3374	4166	4103	5142	5934

Pricing is continued on the following page.

# storage cabinets

**Xpress**

## CEKO

### Cabinet Kit for One Appliance – Doors (Continued)

**DIMENSIONS**  
INCHES / MM

D	W	H
30 / 762	28 / 711	90 / 2286
30 / 762	30 / 762	90 / 2286
30 / 762	32 / 813	90 / 2286
30 / 762	34 / 889	90 / 2286
30 / 762	36 / 914	90 / 2286
30 / 762	38 / 965	90 / 2286
30 / 762	40 / 1016	90 / 2286
30 / 762	28 / 711	96 / 2438
30 / 762	30 / 762	96 / 2438
30 / 762	32 / 813	96 / 2438
30 / 762	34 / 889	96 / 2438
30 / 762	36 / 914	96 / 2438
30 / 762	38 / 965	96 / 2438
30 / 762	40 / 1016	96 / 2438

24 / 610	28 / 711	90 / 2286
24 / 610	30 / 762	90 / 2286
24 / 610	32 / 813	90 / 2286
24 / 610	34 / 889	90 / 2286
24 / 610	36 / 914	90 / 2286
24 / 610	38 / 965	90 / 2286
24 / 610	40 / 1016	90 / 2286

24 / 610	28 / 711	96 / 2438
24 / 610	30 / 762	96 / 2438
24 / 610	32 / 813	96 / 2438
24 / 610	34 / 889	96 / 2438
24 / 610	36 / 914	96 / 2438
24 / 610	38 / 965	96 / 2438
24 / 610	40 / 1016	96 / 2438

25 / 635	28 / 711	90 / 2286
25 / 635	30 / 762	90 / 2286
25 / 635	32 / 813	90 / 2286
25 / 635	34 / 889	90 / 2286
25 / 635	36 / 914	90 / 2286
25 / 635	38 / 965	90 / 2286
25 / 635	40 / 1016	90 / 2286

**PRICING**

#### 75" APPLIANCE SECTION HEIGHT

##### GRADE 2 LAMINATE FRONT (CONTINUED)

###### SOURCE LAMINATE CASE

###### GABLE FINISH

Source Laminate	Grade 2 Laminate	Flintwood
1857	2865	3596
1881	2889	3620
1906	2914	3645
1930	2938	3669
1954	2962	3693
1978	2986	3717
2003	3011	3742
2086	3161	3917
2127	3202	3958
2169	3244	4000
2210	3285	4041
2252	3327	4083
2294	3369	4125
2335	3410	4166

###### FLINTWOOD CASE

Source Laminate	Grade 2 Laminate	Flintwood
3122	4130	4861
3176	4184	4915
3231	4239	4970
3285	4293	5024
3341	4349	5080
3394	4402	5133
3449	4457	5188
3637	4712	5468
3714	4789	5545
3793	4868	5624
3870	4945	5701
3949	5024	5780
4026	5101	5857
4103	5178	5934

#### FLINTWOOD FRONT

##### SOURCE LAMINATE CASE

###### GABLE FINISH

Source Laminate	Grade 2 Laminate	Flintwood
1687	2494	3189
1709	2516	3211
1733	2540	3235
1755	2562	3257
1778	2585	3280
1801	2608	3303
1824	2631	3326

1886	2746	3473
1924	2784	3511
1962	2822	3549
2001	2861	3588
2040	2900	3627
2079	2939	3666
2117	2977	3704

##### FLINTWOOD CASE

Source Laminate	Grade 2 Laminate	Flintwood
2911	3718	4413
2952	3759	4454
2995	3802	4497
3037	3844	4539
3079	3886	4581
3120	3927	4622
3162	3969	4664

3373	4233	4960
3430	4290	5017
3490	4350	5077
3548	4408	5135
3607	4467	5194
3667	4527	5254
3724	4584	5311

1687	2527	3189
1709	2549	3211
1733	2573	3235
1755	2595	3257
1778	2618	3280
1801	2641	3303
1824	2664	3326

2911	3751	4413
2952	3792	4454
2995	3835	4497
3037	3877	4539
3079	3919	4581
3120	3960	4622
3162	4002	4664

Pricing is continued on the following page.

**C E K O**  
**Cabinet Kit for One Appliance –**  
**Doors (Continued)**

**DIMENSIONS**  
**INCHES / MM**

D	W	H
25 / 635	28 / 711	96 / 2438
25 / 635	30 / 762	96 / 2438
25 / 635	32 / 813	96 / 2438
25 / 635	34 / 889	96 / 2438
25 / 635	36 / 914	96 / 2438
25 / 635	38 / 965	96 / 2438
25 / 635	40 / 1016	96 / 2438
29 / 737	28 / 711	90 / 2286
29 / 737	30 / 762	90 / 2286
29 / 737	32 / 813	90 / 2286
29 / 737	34 / 889	90 / 2286
29 / 737	36 / 914	90 / 2286
29 / 737	38 / 965	90 / 2286
29 / 737	40 / 1016	90 / 2286
29 / 737	28 / 711	96 / 2438
29 / 737	30 / 762	96 / 2438
29 / 737	32 / 813	96 / 2438
29 / 737	34 / 889	96 / 2438
29 / 737	36 / 914	96 / 2438
29 / 737	38 / 965	96 / 2438
29 / 737	40 / 1016	96 / 2438
30 / 762	28 / 711	90 / 2286
30 / 762	30 / 762	90 / 2286
30 / 762	32 / 813	90 / 2286
30 / 762	34 / 889	90 / 2286
30 / 762	36 / 914	90 / 2286
30 / 762	38 / 965	90 / 2286
30 / 762	40 / 1016	90 / 2286
30 / 762	28 / 711	96 / 2438
30 / 762	30 / 762	96 / 2438
30 / 762	32 / 813	96 / 2438
30 / 762	34 / 889	96 / 2438
30 / 762	36 / 914	96 / 2438
30 / 762	38 / 965	96 / 2438
30 / 762	40 / 1016	96 / 2438

**PRICING**

75" APPLIANCE SECTION HEIGHT					
FLINTWOOD FRONT (CONTINUED)					
SOURCE LAMINATE CASE			FLINTWOOD CASE		
GABLE FINISH					
Source Laminate	Grade 2 Laminate	Flintwood	Source Laminate	Grade 2 Laminate	Flintwood
1886	2782	3473	3373	4269	4960
1924	2820	3511	3430	4326	5017
1962	2858	3549	3490	4386	5077
2001	2897	3588	3548	4444	5135
2040	2936	3627	3607	4503	5194
2079	2975	3666	3667	4563	5254
2117	3013	3704	3724	4620	5311
1839	2814	3578	3107	4082	4846
1862	2837	3601	3160	4135	4899
1887	2862	3626	3215	4190	4954
1911	2886	3650	3269	4244	5008
1935	2910	3674	3324	4299	5063
1959	2934	3698	3378	4353	5117
1983	2958	3722	3432	4407	5171
2065	3104	3896	3619	4658	5450
2105	3144	3936	3695	4734	5526
2148	3187	3979	3774	4813	5605
2189	3228	4020	3851	4890	5682
2230	3269	4061	3929	4968	5760
2272	3311	4103	4006	5045	5837
2312	3351	4143	4082	5121	5913
1839	2847	3578	3107	4115	4846
1862	2870	3601	3160	4168	4899
1887	2895	3626	3215	4223	4954
1911	2919	3650	3269	4277	5008
1935	2943	3674	3324	4332	5063
1959	2967	3698	3378	4386	5117
1983	2991	3722	3432	4440	5171
2065	3140	3896	3619	4694	5450
2105	3180	3936	3695	4770	5526
2148	3223	3979	3774	4849	5605
2189	3264	4020	3851	4926	5682
2230	3305	4061	3929	5004	5760
2272	3347	4103	4006	5081	5837
2312	3387	4143	4082	5157	5913