

base cabinets

Xpress

CEBS

Base Cabinet – Door(s)

WHAT'S INCLUDED

1 base cabinet, adjustable feet, clips for toe kick – front, pull(s) (as specified), mounting hardware, locks and keys (as specified) and adjustable shelf per compartment listed below:

Adjustable Shelf	12" to 36" w	42" w 1 Vertical Divider
32" or 35" h	1	1

WHAT'S EXCLUDED

Countertop (CEWCT), Toe Kick – Front (CEATF) and Toe Kick – Side (CEATS).

NOTES

32" high cabinet and Full Extension – Soft-Close (F) Hinges are suitable for People with Reduced Mobility.

When Flintwood Front Finish is specified, only Not Applicable (NA) Edge Trim Finish is available.

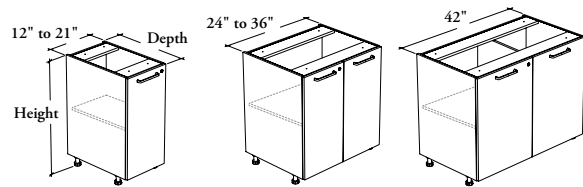
When Stainless (8) or Drilled On-Site – No Pull (Z) Pull Style is specified, Pull Finish is **not** available.

Shelf(ves) are 24" deep for all cabinet depths.

Holes at 1 1/4" intervals allow for shelf adjustment.

Additional Shelves for Cabinet (CEACS) are available and must be specified separately.

Xpress See *Xpress Program* and/or specification software for finishes availability.



PRODUCT OPTIONS

Depth	Width	Height	Door Swing Direction	Hinge Style	Front Finish
24, 29	12, 15, 18, 21, 24, 27, 30, 33, 36, 42	32, 35	L Door Swing – Left (Shown) R Door Swing – Right N Not Applicable	F Full Extension – Soft Close S Standard – Soft Close	Source Laminate Foundation Laminate Grade 2 Laminate Flintwood (No Cathedral)

SAMPLE ORDER CODE

CEBS 24	30	35	N	S	3G
----------------	-----------	-----------	----------	----------	-----------

PRODUCT OPTIONS CONTINUED

Edge Trim Finish	Case Finish	Pull Style		Pull Finish (If Applicable)	Key Style
Edge Trim Colors NA Not Applicable	Source Laminate	1 Standard Expansion 8 Stainless (ADA) 9 Rectangular E Edge – Standard	F Edge – Small M Modern Straight (ADA) S Slim (Shown) Z Drilled On-Site – No Pull	Foundation Accent Mica	K Keyed Alike R Keyed Randomly N No Lock

SAMPLE ORDER CODE CONTINUED

4G	3G	S	52	N
-----------	-----------	----------	-----------	----------

See Pricing on the following page.

Base Cabinet – Door(s) (Continued)

DIMENSIONS
INCHES / MM

PRICING

DIMENSIONS			PRICING							
			LEFT (L) OR RIGHT (R) DOOR SWING				FULL EXTENSION – SOFT CLOSE HINGE (F)			
			STANDARD – SOFT CLOSE HINGE (S)				FULL EXTENSION – SOFT CLOSE HINGE (F)			
			FRONT FINISH							
D	W	H	Source Laminate	Foundation Laminate	Grade 2 Laminate	Flintwood	Source Laminate	Foundation Laminate	Grade 2 Laminate	Flintwood
24 / 610	12 / 305	32 / 813	765	827	906	897	801	863	942	933
24 / 610	15 / 381	32 / 813	807	885	964	954	843	921	1000	990
24 / 610	18 / 457	32 / 813	846	939	1019	1008	882	975	1055	1044
24 / 610	21 / 533	32 / 813	888	996	1075	1064	924	1032	1111	1100
24 / 610	12 / 305	35 / 889	787	856	935	925	823	892	971	961
24 / 610	15 / 381	35 / 889	829	915	994	984	865	951	1030	1020
24 / 610	18 / 457	35 / 889	872	975	1054	1043	908	1011	1090	1079
24 / 610	21 / 533	35 / 889	915	1035	1114	1102	951	1071	1150	1138
29 / 737	12 / 305	32 / 813	789	851	931	921	825	887	967	957
29 / 737	15 / 381	32 / 813	832	910	989	979	868	946	1025	1015
29 / 737	18 / 457	32 / 813	874	967	1047	1036	910	1003	1083	1072
29 / 737	21 / 533	32 / 813	917	1025	1104	1093	953	1061	1140	1129
29 / 737	12 / 305	35 / 889	807	876	955	945	843	912	991	981
29 / 737	15 / 381	35 / 889	851	937	1017	1006	887	973	1053	1042
29 / 737	18 / 457	35 / 889	896	999	1078	1067	932	1035	1114	1103
29 / 737	21 / 533	35 / 889	942	1062	1141	1129	978	1098	1177	1165
			NOT APPLICABLE DOOR SWING (N)							
24 / 610	24 / 610	32 / 813	987	1111	1266	1253	1059	1183	1338	1325
24 / 610	27 / 686	32 / 813	1025	1164	1321	1307	1097	1236	1393	1379
24 / 610	30 / 762	32 / 813	1063	1218	1347	1333	1135	1290	1419	1405
24 / 610	33 / 838	32 / 813	1099	1269	1403	1389	1171	1341	1475	1461
24 / 610	36 / 914	32 / 813	1137	1322	1467	1452	1209	1394	1539	1524
24 / 610	42 / 1067	32 / 813	1311	1527	1690	1673	1383	1599	1762	1745
24 / 610	24 / 610	35 / 889	1022	1159	1310	1297	1094	1231	1382	1369
24 / 610	27 / 686	35 / 889	1060	1214	1367	1353	1132	1286	1439	1425
24 / 610	30 / 762	35 / 889	1100	1271	1393	1379	1172	1343	1465	1451
24 / 610	33 / 838	35 / 889	1137	1325	1454	1439	1209	1397	1526	1511
24 / 610	36 / 914	35 / 889	1177	1382	1523	1507	1249	1454	1595	1579
24 / 610	42 / 1067	35 / 889	1356	1595	1751	1733	1428	1667	1823	1805
29 / 737	24 / 610	32 / 813	1024	1148	1303	1290	1096	1220	1375	1362
29 / 737	27 / 686	32 / 813	1064	1203	1360	1346	1136	1275	1432	1418
29 / 737	30 / 762	32 / 813	1104	1259	1388	1374	1176	1331	1460	1446
29 / 737	33 / 838	32 / 813	1142	1312	1447	1432	1214	1384	1519	1504
29 / 737	36 / 914	32 / 813	1181	1366	1511	1496	1253	1438	1583	1568
29 / 737	42 / 1067	32 / 813	1370	1586	1750	1732	1442	1658	1822	1804
29 / 737	24 / 610	35 / 889	1070	1207	1359	1345	1142	1279	1431	1417
29 / 737	27 / 686	35 / 889	1111	1265	1419	1404	1183	1337	1491	1476
29 / 737	30 / 762	35 / 889	1153	1324	1447	1432	1225	1396	1519	1504
29 / 737	33 / 838	35 / 889	1192	1380	1509	1494	1264	1452	1581	1566
29 / 737	36 / 914	35 / 889	1234	1439	1580	1564	1306	1511	1652	1636
29 / 737	42 / 1067	35 / 889	1425	1664	1821	1802	1497	1736	1893	1874