

# base cabinets

**Xpress**

## CEBKRS

### Base Cabinet for Sink – People with Reduced Mobility – Doors



#### WHAT'S INCLUDED

1 base cabinet with levelers, integrated metal toe kick, pulls (as specified) and mounting hardware.

#### WHAT'S EXCLUDED

Countertop (CEWCT).

#### NOTES

For people with reduced mobility, this cabinet allows a full front or a lateral approach. Sink Cut-Out must be done by installer.

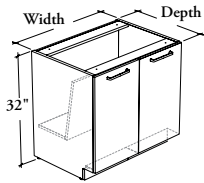
Toe Kick – Front (CEATF) and Toe Kick – Side (CEATS) are **not** required and **not** compatible with this product.

No shelf included.

When Flintwood Front Finish is specified, only Not Applicable (NA) Edge Trim Finish is available.

When Stainless (8) or Drilled On-Site – No Pull (Z) Pull Style is specified, Pull Finish is **not** available.

**Xpress** See *Xpress Program* and/or specification software for finishes availability.



#### PRODUCT OPTIONS

Depth	Width	Height	Hinge Style	Front Finish
24, 29	36, 42	32	<b>F</b> Full Extension – Soft Close	Source Laminate Foundation Laminate Grade 2 Laminate Flintwood (No Cathedral)

#### SAMPLE ORDER CODE

<b>CEBKRS 24</b>	<b>36</b>	<b>32</b>	<b>F</b>	<b>3G</b>
------------------	-----------	-----------	----------	-----------

#### PRODUCT OPTIONS CONTINUED

Edge Trim Finish	Case Finish	Toe Kick Finish	Pull Style		Pull Finish (If Applicable)
Edge Trim Colors <b>NA</b> Not Applicable	Source Laminate	Foundation Mica Coordinate Colors	<b>1</b> Standard Expansion <b>8</b> Stainless (ADA) <b>9</b> Rectangular <b>E</b> Edge – Standard	<b>F</b> Edge – Small <b>M</b> Modern Straight (ADA) <b>S</b> Slim (Shown) <b>Z</b> Drilled On-Site – No Pull	Foundation Accent Mica

#### SAMPLE ORDER CODE CONTINUED

<b>4G</b>	<b>3G</b>	<b>83</b>	<b>S</b>	<b>52</b>
-----------	-----------	-----------	----------	-----------

#### DIMENSIONS INCHES / MM

D	W	H
24 / 610	36 / 914	32 / 813
24 / 610	42 / 1067	32 / 813
29 / 737	36 / 914	32 / 813
29 / 737	42 / 1067	32 / 813

#### PRICING

##### FRONT FINISH

Source Laminate	Foundation Laminate	Grade 2 Laminate	Flintwood
1430	1615	1768	1750
1499	1715	1889	1870
1486	1671	1825	1806
1566	1782	1957	1937