

WHAT'S INCLUDED

1 base cabinet with levelers, 1 false front and mounting hardware.

WHAT'S EXCLUDED

Countertop (CEWCT).

NOTES

For people with reduced mobility, this cabinet allows a full front or a lateral approach.

Sink Cut-Out must be done by installer.

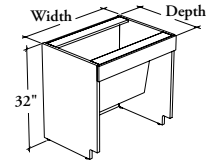
Toe Kick – Front (CEATF) and Toe Kick – Side (CEATS) are **not** required and **not** compatible with this product.

When Flintwood Front Finish is specified, only Not Applicable (NA) Edge Trim Finish is available.

Xpress See *Xpress Program* and/or specification software for finishes availability.



CEBKRO
Base Cabinet for Sink –
People with Reduced Mobility
– Open



PRODUCT OPTIONS

Depth	Width	Height	Front Finish	Edge Trim Finish	Case Finish
24, 29	33, 36, 42	32	Source Laminate Foundation Laminate Grade 2 Laminate Flintwood (No Cathedral)	Edge Trim Colors NA Not Applicable	Source Laminate

SAMPLE ORDER CODE

CEBKRO 24	36	32	3G	4G	3G
------------------	-----------	-----------	-----------	-----------	-----------

DIMENSIONS
INCHES / MM

D	W	H
24 / 610	33 / 838	32 / 813
24 / 610	36 / 914	32 / 813
24 / 610	42 / 1067	32 / 813
29 / 737	33 / 838	32 / 813
29 / 737	36 / 914	32 / 813
29 / 737	42 / 1067	32 / 813

PRICING

FRONT FINISH				
Source Laminate	Foundation Laminate	Grade 2 Laminate	Flintwood	
1058	1107	1157	1248	
1086	1139	1194	1277	
1141	1203	1267	1336	
1109	1158	1208	1299	
1142	1195	1250	1333	
1208	1270	1334	1403	

storage cabinets