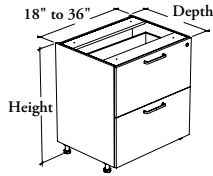


base cabinets

Xpress

CEBDLF

Base Cabinet – Filing Drawers



WHAT'S INCLUDED

1 base cabinet, adjustable feet, clips for toe kick – front, pulls (as specified), mounting hardware, locks and keys (as specified), and 15" cross file bar(s) per drawer listed below:

15" Cross File Bar	18" to 27" w	30" to 36" w
	1	2

WHAT'S EXCLUDED

Countertop (CEWCT), Toe Kick – Front (CEATF) and Toe Kick – Side (CEATS).

NOTES

32" high cabinet is suitable for People with Reduced Mobility.

Drawer features a 16" deep black drawer body and accept legal and letter size paper.

When locks are specified, a central locking system is provided.

When Flintwood Front Finish is specified, only Not Applicable (NA) Edge Trim Finish is available.

When Stainless (8) or Drilled On-Site – No Pull (Z) Pull Style is specified, Pull Finish is **not** available.

Xpress See *Xpress Program* and/or specification software for finishes availability.

PRODUCT OPTIONS

Depth	Width	Height	Drawer Style	Front Finish
24, 29	18, 21, 24, 27, 30, 33, 36	32, 35	S Standard – Soft Close	Source Laminate Foundation Laminate Grade 2 Laminate Flintwood (No Cathedral)

SAMPLE ORDER CODE

CEBDLF 24	24	35	S	3G
------------------	-----------	-----------	----------	-----------

PRODUCT OPTIONS CONTINUED

Edge Trim Finish	Case Finish	Pull Style		Pull Finish (If Applicable)	Key Style
Edge Trim Colors NA Not Applicable	Source Laminate	1 Standard Expansion 8 Stainless (ADA) 9 Rectangular E Edge – Standard	F Edge – Small M Modern Straight (ADA) S Slim (Shown) Z Drilled On-Site – No Pull	Foundation Accent Mica	K Keyed Alike R Keyed Randomly N No Lock

SAMPLE ORDER CODE CONTINUED

4G	3G	S	52	N
-----------	-----------	----------	-----------	----------

See Pricing on the following page.

C E B D L F
Base Cabinet – Filing Drawers
(Continued)

DIMENSIONS
INCHES / MM

D	W	H
24 / 610	18 / 457	32 / 813
24 / 610	21 / 533	32 / 813
24 / 610	24 / 610	32 / 813
24 / 610	27 / 686	32 / 813
24 / 610	30 / 762	32 / 813
24 / 610	33 / 838	32 / 813
24 / 610	36 / 914	32 / 813
24 / 610	18 / 457	35 / 889
24 / 610	21 / 533	35 / 889
24 / 610	24 / 610	35 / 889
24 / 610	27 / 686	35 / 889
24 / 610	30 / 762	35 / 889
24 / 610	33 / 838	35 / 889
24 / 610	36 / 914	35 / 889
29 / 737	18 / 457	32 / 813
29 / 737	21 / 533	32 / 813
29 / 737	24 / 610	32 / 813
29 / 737	27 / 686	32 / 813
29 / 737	30 / 762	32 / 813
29 / 737	33 / 838	32 / 813
29 / 737	36 / 914	32 / 813
29 / 737	18 / 457	35 / 889
29 / 737	21 / 533	35 / 889
29 / 737	24 / 610	35 / 889
29 / 737	27 / 686	35 / 889
29 / 737	30 / 762	35 / 889
29 / 737	33 / 838	35 / 889
29 / 737	36 / 914	35 / 889

PRICING

STANDARD – SOFT CLOSE DRAWER (S)				
FRONT FINISH				
Source Laminate	Foundation Laminate	Grade 2 Laminate	Flintwood	
1352	1445	1541	1722	
1423	1531	1643	1805	
1491	1615	1742	1882	
1550	1689	1833	1956	
1607	1762	1921	2029	
1666	1836	2011	2104	
1725	1910	2102	2178	
1376	1479	1585	1759	
1448	1568	1691	1846	
1519	1656	1797	1929	
1579	1733	1892	2008	
1637	1808	1985	2086	
1697	1885	2079	2166	
1757	1962	2174	2245	
1380	1473	1569	1750	
1452	1560	1672	1834	
1529	1653	1780	1920	
1589	1728	1872	1995	
1648	1803	1962	2070	
1708	1878	2053	2146	
1769	1954	2146	2222	
1400	1503	1609	1783	
1474	1594	1717	1872	
1568	1705	1846	1978	
1630	1784	1943	2059	
1690	1861	2038	2139	
1752	1940	2134	2221	
1815	2020	2232	2303	