

WHAT'S INCLUDED

1 end panel and mounting hardware.

NOTES

End Panel depth must match the cabinet depth.

End Panel is a finishing component and **does not** provide any support to a countertop.

Compatible with all Base Cabinets except for:

- Base Cabinet for Sink – People with Reduced Mobility – Doors (CEBKRS)
- Base Cabinet for Sink – People with Reduced Mobility – Open (CEBKRO)

Cannot be used under an Island Structure.

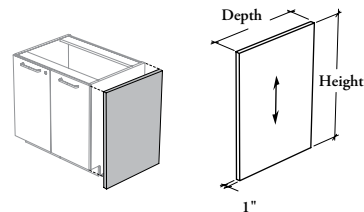
When Grade 2 Laminate is specified, the Accent colors are **not** included.

Xpress See *Xpress Program* and/or specification software for finishes availability.



CEAEB

End Panel – Base Cabinet



PRODUCT OPTIONS

Depth	Height	End Panel Finish
24, 25, 29, 30	32, 35	Source Laminate Grade 2 Laminate Flintwood (No Cathedral)

SAMPLE ORDER CODE

CEAEB 25	35	XG
-----------------	-----------	-----------

**DIMENSIONS
INCHES / MM**

D	H
24 / 610	32 / 813
25 / 635	32 / 813
29 / 737	32 / 813
30 / 762	32 / 813
24 / 610	35 / 889
25 / 635	35 / 889
29 / 737	35 / 889
30 / 762	35 / 889

PRICING

END PANEL FINISH			
	Source Laminate	Grade 2 Laminate	Flintwood
	178	324	533
	178	324	533
	202	379	578
	202	379	578
	178	324	533
	178	324	533
	202	379	578
	202	379	578