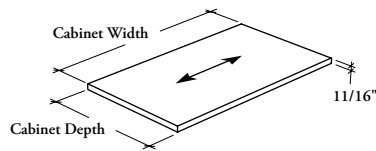


**Xpress**

**CEACS**  
**Shelf for Cabinet**



**WHAT'S INCLUDED**

1 shelf and mounting hardware.

**NOTES**

Widths larger than 36" comes in two parts.

Compatible with cabinets listed below:

- Upper Cabinet – Open (CEUO) or – Door(s) (CEUS or CEUG)
- Upper Cabinet – Microwave Section (CEUMS)
- Upper Cabinet – Pigeonholes Section (CEUPO or CEUPS)
- Upper Cabinet for Blind Corner (CEUCS or CEUCG)
- Base Cabinet – Open (CEBO) or – Door(s) (CEBS)
- Base Cabinet – Door(s) & Drawers (CEBDS)
- Base Cabinet for Blind Corner (CEBCBS)
- Tall Cabinet – Open (CETO) or – Door(s) (CETS)
- Two-High Tall Cabinet (CETT or CETD)
- Tall Cabinets – Microwave Section(s) (CEMS or CEMD)

**Xpress** See *Xpress Program* and/or specification software for finishes availability.

**PRODUCT OPTIONS**

Cabinet Depth	Cabinet Width	Shelf Finish
12, 15, 24, 29	12, 15, 18, 21, 24, 27, 30, 33, 36, 39, 42, 45, 48, 51, 54, 57, 60	Source Laminate Flintwood (No Cathedral)

**SAMPLE ORDER CODE**

<b>CEACS 15</b>	<b>42</b>	<b>XS</b>
-----------------	-----------	-----------

**DIMENSIONS**  
**INCHES / MM**

Cabinet D	Cabinet W
12 / 305	12 / 305
12 / 305	15 / 381
12 / 305	18 / 457
12 / 305	21 / 533
12 / 305	24 / 610
12 / 305	27 / 686
12 / 305	30 / 762
12 / 305	33 / 838
12 / 305	36 / 914
12 / 305	39 / 991
12 / 305	42 / 1067
12 / 305	45 / 1143
12 / 305	48 / 1219
12 / 305	51 / 1295
12 / 305	54 / 1371
12 / 305	57 / 1448
12 / 305	60 / 1524

**PRICING**

SHELF FINISH	
Source Laminate	Flintwood
36	231
40	242
44	253
48	265
52	276
56	287
59	298
63	309
67	320
71	332
75	343
79	354
82	365
86	376
90	387
94	398
98	410

**DIMENSIONS**  
**INCHES / MM**

Cabinet W	Cabinet D
15 / 381	12 / 305
15 / 381	15 / 381
15 / 381	18 / 457
15 / 381	21 / 533
15 / 381	24 / 610
15 / 381	27 / 686
15 / 381	30 / 762
15 / 381	33 / 838
15 / 381	36 / 914
15 / 381	39 / 991
15 / 381	42 / 1067
15 / 381	45 / 1143
15 / 381	48 / 1219
15 / 381	51 / 1295
15 / 381	54 / 1371
15 / 381	57 / 1448
15 / 381	60 / 1524

**PRICING**

SHELF FINISH	
Source Laminate	Flintwood
40	242
45	256
49	270
54	285
58	299
63	313
67	328
72	342
77	356
81	370
86	385
90	399
95	413
99	428
104	442
108	456
113	470

Pricing is continued on the following page.

