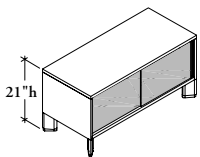


storage

Xpress

ULSE

Low Double Sliding Door Credenza – Elevated



The Elevated Low Double Sliding Door Credenza provides secured, lockable binder storage, and the capability to support stackers and panels.

WHAT'S INCLUDED

1 credenza, 2 District feet or 4 angled feet (as specified), 2 sliding doors with pulls, lock and keys (if specified).

WHAT'S EXCLUDED

A Seat Cushion (UWLC) or Fitted Seated Cushion (UWLF) can be ordered separately. Can be found in the *Accessories* section.

NOTES

Double Sliding Door Credenzas will always have two sections secured with two sliding doors regardless of the width of the unit.

The 16" deep **cannot** be specified with a District Foot (D).

The Reconfigurable Low Credenza-to-Worksurface Support (UWCPWN) **cannot** be used with this unit as it will interfere with the sliding door.

It is **not** recommended that Double Sliding Door Credenzas be used to support worksurfaces in a perpendicular application as handle pulls will be difficult to reach under the worksurface.

Cubby Power Mounting (EWQPM) cannot be mounted in sliding door credenzas.

Xpress Case & Front Finish Flintwood and Natural Veneer and Backpainted Glass (BP) are excluded from *Teknion's Xpress Program*.

PRODUCT OPTIONS

Depth	Width	Pull Finish	Case, Back & Front Finish	Foot Finish	Foot Style	Electrical Cut Out (Angled Foot Only)	Key Style
16, 19	42, 48, 54, 60, 66, 72, 78, 84, 90, 96	Foundation Mica	Source Laminate Flintwood Natural Veneer FT Frost Standard Glass BP Backpainted Glass	Q Storm White 7 Platinum V Very White X Anthracite M Graphite 2 Burnished Bronze	D District A Angled Foot	TR Base and Top Grommet Right TL Base and Top Grommet Left NN None	K Keyed Alike R Keyed Randomly N No Lock

SAMPLE ORDER CODE

		Case			Back		Front			
ULSE 16	90	7	ZA	ZA	ZA	7	A	NN	R	

DIMENSIONS INCHES / MM

D	W
16 / 406	42 / 1067
16 / 406	48 / 1219
16 / 406	54 / 1372
16 / 406	60 / 1524
16 / 406	66 / 1676
16 / 406	72 / 1829
16 / 406	78 / 1981
16 / 406	84 / 2134
16 / 406	90 / 2286
16 / 406	96 / 2438
19 / 483	42 / 1067
19 / 483	48 / 1219
19 / 483	54 / 1372
19 / 483	60 / 1524
19 / 483	66 / 1676
19 / 483	72 / 1829
19 / 483	78 / 1981
19 / 483	84 / 2134
19 / 483	90 / 2286
19 / 483	96 / 2438

PRICING

SOURCE LAMINATE CASE

Source Lam. Back & Front	Source Lam. Back, Flintwood Front	Source Lam. Back, Glass Front
1592	2422	1836
1704	2499	1928
1808	2571	2027
1913	2638	2117
2027	2714	2225
2138	2789	2357
2245	2865	2492
2349	2945	2623
2457	3028	2745
n/a	n/a	n/a
1670	2544	1928
1791	2623	2025
1899	2696	2127
2009	2771	2225
2127	2848	2334
2245	2927	2474
2358	3009	2617
2465	3093	2753
2580	3181	2883
n/a	n/a	n/a

FLINTWOOD CASE

Flintwood Back, Glass Front	Flintwood Back & Front
3504	3347
3645	3481
3782	3610
3924	3747
4073	3888
4232	4038
4389	4191
4559	4352
4735	4519
4915	4693
3683	3515
3828	3655
3972	3790
4121	3934
4276	4084
4442	4239
4612	4402
4787	4569
4972	4743
5161	4924

VENEER CASE

Veneer Back, Glass Front	Veneer Back & Front
3627	3463
3776	3604
3916	3740
4063	3878
4218	4028
4379	4181
4548	4341
4722	4505
4903	4677
5090	4859
3805	3634
3963	3783
4109	3924
4268	4073
4430	4231
4597	4386
4775	4555
4957	4733
5150	4911
5345	5101

If Base & Top Grommet is specified, add 241