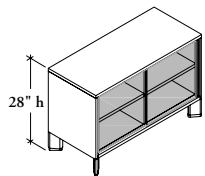


storage

Xpress

U H S E

High Double Sliding Door Credenza – Elevated



The Elevated High Double Sliding Door Credenza provides secured, lockable binder storage, and the capability to support stackers and panels.

WHAT'S INCLUDED

1 credenza, 2 District feet or 4 angled feet (as specified), 2 sliding doors with pulls, 2 height-adjustable shelves, lock and keys (if specified).

WHAT'S EXCLUDED

A Seat Cushion (UWLC) or Fitted Seated Cushion (UWLF) can be ordered separately. Can be found in the *Accessories* section.

NOTES

Double Sliding Door Credenzas will always have two sections secured with two sliding doors regardless of the width of the unit.

The 16" deep **cannot** be specified with a District Foot (D).

It is **not** recommended that Double Sliding Door Credenzas be used to support worksurfaces in a perpendicular application as handle pulls will be difficult to reach under the worksurface.

Xpress Case & Front Finish Flintwood and Natural Veneer and Backpainted Glass (BP) are excluded from *Teknion's Xpress Program*.

PRODUCT OPTIONS

Depth	Width	Pull Finish	Case, Back & Front Finish	Foot Finish	Foot Style	Electrical Cut Out (Angled Foot Only)	Key Style
16, 19	42, 48, 54, 60, 66, 72, 78, 84, 90, 96	Foundation Mica	Source Laminate Flintwood Natural Veneer FT Frost Standard Glass BP Backpainted Glass	Q Storm White 7 Platinum V Very White X Anthracite M Graphite 2 Burnished Bronze	D District A Angled Foot	NN None TL Base and Top Grommet Left TR Base and Top Grommet Right	K Keyed Alike R Keyed Randomly N No Lock

SAMPLE ORDER CODE

		Case			Back	Front				
UHSE 16	90	7	ZA	ZA	ZA	7	A	NN	R	

DIMENSIONS INCHES / MM

D	W
16 / 406	42 / 1067
16 / 406	48 / 1219
16 / 406	54 / 1372
16 / 406	60 / 1524
16 / 406	66 / 1676
16 / 406	72 / 1829
16 / 406	78 / 1981
16 / 406	84 / 2134
16 / 406	90 / 2286
16 / 406	96 / 2438
19 / 483	42 / 1067
19 / 483	48 / 1219
19 / 483	54 / 1372
19 / 483	60 / 1524
19 / 483	66 / 1676
19 / 483	72 / 1829
19 / 483	78 / 1981
19 / 483	84 / 2134
19 / 483	90 / 2286
19 / 483	96 / 2438

PRICING

SOURCE LAMINATE CASE

Source Lam. Back & Front	Source Lam. Back, Flintwood Front	Source Lam. Back, Glass Front
1941	2978	2167
2082	3080	2276
2212	3164	2397
2343	3256	2501
2488	3347	2629
2624	3442	2789
2760	3537	2949
2891	3635	3110
3025	3742	3256
n/a	n/a	n/a
2037	3126	2274
2184	3232	2388
2325	3322	2511
2459	3416	2625
2613	3515	2761
2755	3612	2927
2897	3714	3095
3033	3821	3263
3176	3927	3416
n/a	n/a	n/a

FLINTWOOD CASE

Flintwood Back, Glass Front	Flintwood Back & Front
4121	3934
4293	4096
4457	4251
4626	4417
4806	4584
4989	4761
5178	4944
5382	5134
5589	5334
5803	5538
4328	4132
4505	4300
4677	4467
4859	4637
5044	4816
5239	4996
5438	5190
5653	5392
5867	5598
6093	5813

VENEER CASE

Veneer Back, Glass Front	Veneer Back & Front
4268	4073
4264	4072
4428	4229
4597	4386
4775	4555
4956	4732
5147	4910
5345	5101
5552	5299
5766	5501
4479	4276
4478	4275
4649	4439
4827	4609
5014	4784
5204	4965
5403	5159
5614	5357
5831	5563
6056	5777

If Base & Top Grommet is specified, add 241